

PĀNUI

Newsletter for the Northern Coromandel

www.colvillejunction.co.nz



A lovely group from Colville and beyond gathered together at *Colville Café* for the first of the monthly ***Crafternoon Tea with Teuane*** sessions. It was a great success! This is just one of the wonderful events happening in our community this Spring.

See more inside!

Kia ora tatou katoa, I hope everyone is enjoying the slow dawning of Spring. There is much to enjoy and appreciate this time of year as Mother Earth awakes from her slumber once more! With the Spring Equinox falling on the 21st-23rd September, we will experience that middle point between the cold of winter, and the heat of summer. It is a great time to plant seeds, celebrate newness, fertility and growth. All the wonderful community activities in this months Pānui display this enthusiastic energy, so enjoy! *Brooke, Pānui Editor*



PĀNUI NOTICE

If you'd like to be part of the reminder list for all contributions, then email us at

panui@colvillejunction.co.nz

Guidelines for contributions

Send us your community news, notices, events, advertisements, job openings, stories, jokes, tips, and artwork. They may not always be used, and they may be edited for clarity and space. *Please send in Word or Open Office (not PDFs), or post/drop contributions into CJ.*

Last day for contributions
for October issue is:

4pm, Tuesday 19 September

For an electronic colour copy email: panui@colvillejunction.co.nz with 'subscription' in the subject line. For a mail copy: email/phone us. Subscription cost for mailed copies is \$25.00 per annum.

Contact Information

Phone: 07 8666 920

Email: info@colvillejunction.co.nz

2311 Colville Road, RD4,
Coromandel 3584

www.colvillejunction.co.nz

Hours:

Tues, Wed, Fri 10am - 3pm

Closed for lunch 12 - 12:30pm

Closed Mon & Thurs

Manager - Larisa Webb
manager@colvillejunction.co.nz
021 258 8037

Manager's Assistant

Anne Mountjoy
assistant@colvillejunction.co.nz

Financial Administrator

Nicole McCauley
finance@colvillejunction.co.nz

Colville Harbour Care Nursery

Sassy Acorn
nursery@colvillejunction.co.nz
028 436 0193

Youth Group

Danielle Van Resseghem
& Nathan McCauley
colvilleyouthgroup@gmail.com

Pānui Editor

Brooke Dennehy Lakin
panui@colvillejunction.co.nz
Youth Community Development

Coordinator - Maria Dove

youth@colvillejunction.co.nz

Moehau ki te Moana Coordinator

& CJ Grant Writer - Cassidy Connor
cass@colvillejunction.co.nz

Moehau ki te Moana Coordinator

Vanessa Edelsten
vanessa@colvillejunction.co.nz

Colville Tiny Library

Librarian—Tony Wasley
021 023 01876



Kia ora koutou e hoa ma,
There is the feeling of Spring around the corner at *Colville Junction*, with a lot of activities happening this month!

We are so happy to receive a year's funding from *Creative Communities NZ* for the ***Creative Pop-Up!*** Thank you Briar and Anna van Dort for this amazing vision! You're welcome to join Briar every Thursday at the café with a creative project of your own. Or join ***Teuane's crafternoons*** on the first Thursday of every month (*page 9*), with embroidery as the creative focus this month. There is ***Copper Ves-***



sel workshop on 16-17 September. This has been very popular and is sold out but if you're keen please ask Briar to go on the waitlist.

Youth Group has a range of exciting activities this term – thanks to Dani seeking out different opportunities. A big shout-out to *MEG, Coro Superstars* and *The Waterworks* for your support – and all our wonderful volunteers that make these activities possible. We will be running *Youth Group* in Term 4 too – we will let you know in the next Pānui what activities will be offered then. We have ***two potting parties*** at the *Colville Harbour Care Nursery* this month. These are always a wonderful community event – so many times I've gone with the intention of only staying for part but enjoy it so much I can't leave! We're very excited to have ***Riyah Snow*** join Sassy at the nursery in a new role: CHC Nursery Development Manager. Riyah brings a wealth of experience having worked at *the Eden Project* and running her own horticultural business in the UK.



We are also gearing up for the ***Colville Community Festival*** on Labour weekend (*pages 12-13*). Steve and Ella have woven their magic and found some amazing performers for Saturday night, and a range of wonderful workshops. We are very fortunate to have funding from the Creative Pop Up for the Twisty Twins this year – and a comedian and puppeteer at the Colville Festival!

We will also have Coromandel Budget Services starting to offer advice one day a month in Colville – so look out for more information on this.

- Larisa Webb, Colville Junction



COLVILLE HARBOUR CARE
Te Umangawhā o Ngā Waka



MOEHAU
KI TE
MOANA

MOEHAU KI TE MOANA

Potting Parties 2023!

Join us: Saturday 9th September
&
Saturday 7th October 2023
10am -2pm

Where: Colville Harbour Care Nursery, Wharf Rd,
Colville

What to bring: Hat, Water Bottle, Warm clothing,
Boots, Raincoat



**FREE LUNCH
Tea & Coffee!**



RSVP
cass@colvillejunction.co.nz

Facilitated by
Empowerment Trust

Enquiries: manager@colvillejunction.co.nz
Phone: [077 806 6600](tel:0778066600)
Kathy: kathy@empowermenttrust.co.nz
027 305 4528



Colville Safekids Workshop

COME ALONG TO LEARN MORE ABOUT
PROTECTING OUR CHILDREN

THURSDAY 7 SEPTEMBER 23
AT COLVILLE SCHOOL
3.15 PM - 4.15 PM

One hour workshop
Open to all
Childcare provided

**COLVILLE
SAFEKIDS**

Together we can protect children from sexual abuse

KEY MESSAGES

1. Instincts are guardians: teach kids to trust their gut.
2. Stay involved: know what your kids are doing, with whom and where
3. We don't ask our kids to keep secrets only surprises.
4. Partying? Having two substance free adults responsible for kids keeps them twice as safe.
5. Safe touch, safe kids: teach kids the right names for body parts and boundaries to keep them safe.
6. Safe sleepovers: Check, communicate, supervise! Check who is in the house and what the house rules are.
7. If you see and hear something that doesn't sound right, seek anonymous advice: Oranga Tamariki 0508 326 459 contact@ot.govt.nz
8. Support is available if you're having sexual thoughts and/or behaviours about children: Safe Network 09 377 9229 info@safenetwork.org.nz
9. Keep an eye on what your kids see online.

**COLVILLE
SAFEKIDS**

Together we can protect children from sexual abuse

Colville Youth Group

*Youth group is back for the
rest of this year.*

Wednesday 6th September,
3-5pm, *Coro super stars.*
(drama activities)
Pick up: Colville Hall
Thanks.

- Danielle Van Resseghem



*Our sincerest
condolences to family and
friends of
Colin Stanaway
who passed away on
23 of August 2023.*





The Colville Project Board would like to start with some big 'THANK YOU's. Firstly, to Rongomai Bailey for the mapping work he did for the Project recently. Rongomai worked on contour mapping, including overlaying contours on satellite photos and modelling shadowing across the land. This provides a different view of the site and aids our understanding about the site, which in turn benefits our planning. Ngā mihi mahana ki a koe, Rongomai.

We also thank Nicole Turner for her excellent work supporting TCP. Nicole has been the TCP Communications, Marketing, and Funding person since 2022, bringing a range of benefits to the project including building and developing key relationships, developing a fundraising strategy and marketing materials, and streamlining internal processes and systems. Unfortunately Nicole is leaving this role with TCP. However, we hope to keep working with her in other ways. Nicole has been and remains a committed and enthusiastic ambassador for TCP and we are grateful for the work she has done to support the Project. We look forward to working together differently in the future.



Pictured: Bronwyn Blair, Katie Lowes and Janet Palmer

Finally, thank you to those who contributed financially to last month's campaign to raise funds for resource consent. If you'd like to contribute, please go to our website www.thecolvilleproject.nz to donate.

At a Board level, August has seen our subcommittees progress their delegated tasks. At the Trust's recent formal Board meeting, we welcomed our Architect, Gerard Dombrowski, at the beginning of the meeting. Gerard and Rick, our Technical Support person, will continue to meet with the Board at the start of each Board meeting to discuss design and development progression, and keep progress on-track. Ngā mihi.

- The Colville Project Team



Mahamudra Centre

Update

Mahamudra centre is undergoing some changes. We are moving away from offering group retreats and will rather be focusing on providing a space for longer term solitary retreat. Our beautiful retreat cabins are fully self-contained and perfect for those wishing to deepen their practice.

Solitary Retreat at Mahamudra

Retreats can be from 1 week to 2 years by application. While we are a Buddhist centre, we want to open this opportunity for retreat to those on all spiritual journeys and to artists as well.

We would really appreciate if you can spread the word to those you know who may be seeking a space to deepen their spiritual practice or who are wanting to focus on their creativity in peaceful and beautiful surroundings.

There are still a few more opportunities to join us at Mahamudra before we switch to Solitary Retreats. You can find all the information and book any of our retreats on our website www.mahamudra.org.nz

The last of our group retreats:

8-10 September - *Breathe*. A silent meditation retreat with Hedwig Bakker

11-15 October - *How to Face Death Without Fear*. The incomparable Venerable Robina will be here IN PERSON! This is a rare opportunity to receive teachings from a gifted and remarkable teacher.

20-23 October (labour weekend) – *Qi Gong for Everyone* with Hedwig Bakker

We want to say a heartfelt thank you to Susan Rogers for her time and energy given to the centre and wish her all the best for what comes next. We will introduce our new manager in the next edition.

Big love from the whole team and Mahamudra.

- Beth Pearsall



Ā Mātou Kōrero, Our Story

We saw our tamariki and whānau shining recently in the Colville School Cross-Country event. All of our Funsters and Runners displayed a great deal of preparedness, determination and resilience. With the support of their friends, every entrant ended the course with a smile. Cam enjoyed it so much he did 4 laps of honour! A big thanks to all whānau and staff for supporting the event as course marshals, supporters and competitors!



Ako, to Teach and to Learn

Things were seriously tasty in the kitchen recently with herb rolls. Meanwhile, the sun was shining in the garden to welcome our preschool friends. In preparation for our upcoming **Garden to Table Bake Sale**, you might like to look through some recipes for inspiration! Each family will be supplied butter and sugar to create their favourite recipes!



You will all remember the Colville School Bake Sale in 2022 with the delicious baking and professional service from our Colville students. Please add this year's Bake Sale into your calendar - **11am-2pm, September 8th, Colville Café**. All proceeds go to the Colville School, *Garden to Table* programme. This year we are hoping to buy - fruit trees, potting mix, seedlings and seeds. Tell your friends! We couldn't have done it without you! A big shout out goes to Mrs Mac for hosting the event on her driveway.

- Susie Sumner, Principal

POP-UP
Colville Creative

*Crafternoon Tea with Teuane
Come and learn basic embroidery techniques,
while enjoying cake and a cuppa*

EMBROIDERY
WORKSHOP



All resources provided

Thursday 7th September, FREE

Colville cafe, 11am-2pm

Text Teuane to book 021 08 09 6085

COLVILLE BAY PRE-SCHOOL

Charity Inc.



Te koohungahunga o te Uumangawhaa o Ngaa Waka

Ka whaangai, ka tupu, ka puaawai

To nurture, to grow, to blossom

Kia ora koutou,

It feels like an early Spring in Colville with the sun out each day and the children bursting with energy. Our broad beans and radishes are 2 inches high, and we've been planting sunflowers and making more garden space for other seedlings on our wish-list. Our adventures into the ngahere have been full of hut-building, nest-making, water-colour painting, and 'wild-boar' dramatic play; a flurry of teamwork and creativity.

Back at Preschool, the tamariki have been painting rocks and playing with modelling clay, and paper-mâché as we visualise and experiment with what we might exhibit in the Colville Spring art-show/ 'Spring Festival' on Labour weekend. We are looking forward to our clay-bead making workshop with Kay Olgvie in Colville next week for our four-year-olds.

Thanks
to Briar Van
-Dort for
organising
that. On
September
20th we
have the
Cultural



Festival coming up in Coromandel. We are practicing two waiata, one of them a poi song, to perform with Colville School at this Peninsula wide event. In September we also celebrate Taylor's 4th Birthday!

- Esther Powell, Senior Teacher

For information and enrollments please contact Esther at Colville Bay Preschool,
2391 Colville Bay Road

Ph: 0226453272 Email: seniorteacher@colvillebaypreschool.co.nz
www.colvillebaypreschool.co.nz

colvillebaypreschool.co.nz/donate : 38-9005
-0803508-02

Charity number: CC44715

NZBN number: 9429042923077

*Open hours: Tuesday to Friday,
8.45am-3pm, including term breaks.*

**20 free hours for 3 + year olds and
WINZ subsidies available.*

*Preschool transport provided for 3+
year olds: Coromandel to Colville
return; Tuesdays, Wednesdays and
Fridays. Spaces limited;
enquiries welcome.*



POP-UP
Colville Creative

Creative NZ has funded Colville Junction to set up a 'Colville Creative' Pop up for a year! The Colville Creative is for our communities to come together, create and enjoy the arts. Everyone who wants to develop their creativity is welcome. This initiative will include a weekly creative space in the Colville Cafe every Thursday.

OPEN STUDIOS

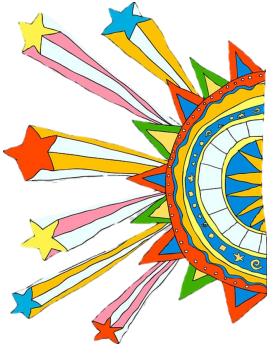


Briar will be weaving, come add your creation to the space, or just have a cuppa and hang-out.

Open Studios - Weekly -Thursdays 9-3pm
FREE @Colville cafe

Briar 022 402 96 81 creative@colvillejunction.co.nz

COLVILLE FESTIVAL



Labour Weekend Fri-Sun 20-23 Oct 2023

Well, basically all is organised - just a few final arrangements to see to. Once again we need to stress that for the Friday and Saturday night events, tickets in advance are essential. Both nights have sold out in the previous few years well before show time. Tickets are available at the Colville Store, now! And online from mid September.

THE PROGRAMME: Friday Night 20/10/23 - Colville Sings The Beatles
Starts 7pm, 12 yrs and up only please. \$30. Supper at halftime - tea, coffee, cakes etc. All koha. Dress up Beatles style. Prizes for best dressed!
Thank you Hike & Bike and Driving Creek Railways.

Saturday Night 21/10/23 - The Big Music Night

Starts 6pm - all ages. \$30 for tickets and under 16 free. Lineup as follows.

- **Maurice Jones** - International Piano Accordion Impresario (not to be missed).
- **Hans Pucket** - (pictured) Wellington Trio - in Rockfest final in Sept and just returned from South by Southwest in Austin, Texas
- **Dr Reknaw** - Wellington Reggae Band, fronted by Sisters Sophie and Julia Cooper.
- **Corrosive Moses** - Whitianga Ska Punk Band.
- **DJ Sun Ray** will finish the night.



Food to purchase available. Cash / Eftpos. (Another Low Alcohol Event. No boxes or bottles of spirits allowed in the hall).

Sunday Night 22/10/23 - Variety Show (Possibly more to be announced)

Starts 5pm - all ages. \$20, under 16 free

- **The Twisty Twinz** - Identical twin acrobats, they are Guinness World Record holders and legends across Aotearoa and Europe.
- **Colville School and Preschool** perform.
- **Joana Simmons** - Wellington Comedian performs her *Banana Jolie* show (wonderful!)
- **Tiny Diva** - Colville's own Dance DJ. Kick your heels up to finish the evening.



Workshops over the weekend

Sample & Loop Workshop with Nathan McCauley

Saturday 10am-12pm \$25, up to 10 participants. This workshop will be looking at using audio loops and samples in compositions and in a live performance situation.



Professional Face Painting Workshop with Anna Molineux from *Magical Masquerade*

Saturday 1.30-4.30pm \$25, up to 15 participants, teens up. 5-6pm - workshop participants will practice on festival goers. Be there if you'd like your face painted (free).

Macrame workshop with Yolanda Wills from Yo's Knots

Sunday 12-2pm \$25, up to 10 participants, 10 yrs up. Learn the basic knots in macrame to make your very own handmade pot plant hanger. Materials provided, bring a pot.

Acrobatic Workshop with The Twisty Twinz

Sunday 2-4pm \$20 adults \$10 kids, up to 25 participants, all ages.



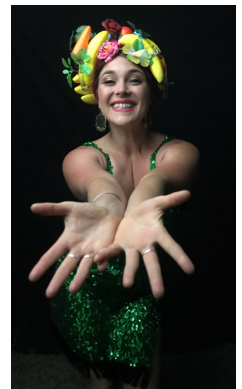
Divine Intuition Workshop- yoga, cacao and meditation with Vanessa and Beth

Sunday 10am-12pm at Colville war memorial hall \$25, up to 16 participants, 12yrs up

DJ BJ is facilitating Banana Boogie dance workshop (with Joana Simmons)

Monday 11am-12pm \$20 adult \$10 kids, unlimited participants, all ages. BANANA BOOGIE is a dance mixtape workshop with the best bangers and sweetest shapes brought to you by choreographer and comedic powerhouse, Banana Jolie (*pictured*).

Be sure to register at Colville Junction to ensure your place at any of the above workshops. Slight changes may occur, we will let you know through facebook, the Chronicle and Pānuī. Any queries re the festival call Colville Junction: 07 8666 920 or Steve 021 711489 / Ella 027 4875131. www.colvilleartsfestival.co.nz FB: Colville Festival.





The Creators & Makers Festival is shaping up if you want to have some of your creative work on display please get in touch pronto. The event will be installed as an exhibition - with various creative activities happening on a daily basis. The Hall is open 10am to 4pm daily, and Lena is in charge of selling all your lovely work. It was a great success in 2021 and hopefully this time around being the last week of the school holidays and the first weekend of the Coromandel Open Studios Tour we will get a fair bit of traffic into the village. This event is all about showcasing the wonderful creative efforts of people in our area

and about providing a place to sell their creations. If you would like to be at the hall demonstrating some art or craft that you are proficient in – get in touch.

The Wedding Dress is a locally written and composed musical play that tells the story of a family gathering to prepare for a wedding. As the wedding dress, worn twice within the family already, is tailored to suit the granddaughter, family secrets begin to unravel.

Under the direction of Brooke Dennehy Lakin, the playwright and composer of this musical, the *Coromandel Player's* with a cast of eight will bring this production to the stage in October of this year. Four performances in the week of October the 9th are planned, and tickets are expect to sell quickly, so keep your eye out for ticket details in the

near future! - *Coromandel Players*



A musical play

Upper Coromandel Landcare Association UCLA Conservation Report

RUBBISH COLLECTION—UPGRADE? NGĀI TAHU CAGED FISH FARM DENIED, NIWA LANDBASED KINGFISH FARM SUCCESS

To quote Brian Easton: local governments were originally created to care for the three 'r's' - ROADING, RATS and RUBBISH. New LGA (Local Government Acts) amendments have changed regional and local authorities, so that our elected councillors have a little to no power.

Well rubbish has come up in the world and we are now Waste Management customers.

Question: Who remembers being interviewed on the dramatic changes we now encounter?

Question: Do we imagine that profit is the main motivator for the offspring of a major multinational? (WM subsidiary of IGNEO holding \$14.8 billion worth of assets worldwide—ultimately owned by MitsubishiUFJ Financial Group)

Question: the change is promoted as an UPGRADE... the upgrade is in the cost and the enormous plastic (un-recyclable plastic?) monuments decorating streets and front yards like genetically modified garden
15 gnomes (apologies to gnomes).

Meanwhile, what happened to local business Smart Environmental? UCLA supports bringing this business back in house. Ngāi Tahu Seafood Resources Ltd were denied the opportunity to build an open ocean caged salmon farm in Foveaux Strait. The independent panel of experts (Clare Lenihan, Reginald Proffit, Sharon McGarry) said the benefits did not outweigh the environmental costs. Sadly, for all of us, the already degraded Hauraki Gulf has a sprawling 3 square kilometer caged kingfish industry approved.

STOP THE PRESS: NIWA and NORTHLAND REGIONAL COUNCIL are set to commission a commercial landbased recirculating aquaculture system (RAS) where kingfish (haku) reach 3kgs within 12months. Apparently worldwide landbased RAS Finfish farming is set to overtake traditional marine-based farming. Why wasn't RAS considered here? UCLA may have supported such a venture.

*- Reihana Robinson,
UCLA spokesperson*

Colville Tennis Club AGM

Colville Tennis Club is having its AGM on the **10th of September** at 10am, to be held at the Club house.





COLVILLE COMMUNITY HEALTH CENTRE

2299 Colville Rd, RD 4, Coromandel 3584

Phone 07 8666618. Fax 07 8666619 Text number for the clinic is 4448

Mon, Tues & Thurs 9am – 5pm/ Wed 10am - 5pm/ Fri 9am - 4pm

For the after hours service, phone the clinic number 07 866-6618.

The On Call person will be paged by the after hours service.

Please remember - If it's an emergency, dial 111



Thank you

Thank you to those who have continued to support us and work with our new systems at the clinic which are going well. Please remember feedback is always valued. Of course we love to hear about the things we are great at, and feedback on areas needing improvement is highly valuable as it helps us review, train and improve our systems to better support our community.

Changes to Cervical Screening

Changes to Cervical Screening (smear test). From 12 September 2023, the primary test for cervical screening (previously called a “smear” test) will change to a human papillomavirus (HPV) test, with the option of self-testing. The new screening method will test for the presence of human papillomavirus (HPV).

For most people a speculum exam (used for the test previously known as “smear”) won't be needed for the new HPV test. Although this is still an option if you prefer, and may be recommended based on individual circumstances and screening histories.



You can be confident that a negative HPV test means you are at very low risk of developing abnormal cells that may lead to cervical cancer within the next five years. This means routine cervical screening will only be needed once every five years, not every three years as it is currently. You will still need to consult with your healthcare provider for your screens, even when self-testing.

Please do not wait until self-testing is available to get your cervical screen. The current screening test (previously known as a “smear” test) is clinically safe and continues to be a very effective tool for reducing cervical cancer. If you haven't had a screen in the last three years, get in touch with us to book an appointment.

For more information, please go to <https://www.timetoscreen.nz/cervical-screening/changes-to-the-test/>

Wishing you warmer days,
Your clinic team.

“Life is like photography.
You need the negatives to develop.”
- Unknown





Kia ora tatou!

The MEGa Pest Attack in Porch Charles has been receiving a trap upgrade and 152 NZ AutoTraps AT220's have been installed. Our recent possum monitoring using wax tags showed a significant drop of about 70% from before and after trap placement. The total number of possums caught so far is 450. The results from these automatic resetting traps are incredible and we want to take this opportunity to congratulate the team who have created these traps which we hope will be a game changer for possum control.

Last month, MEG and the kids from the Colville School planted 300 manuka and kanuka trees at the Children's Forest in Waikawau. We also had the privilege of getting to work with the Colville

Youth Group where we explored rockpools, discovered fossils and counted birds.



It is impressive to see how much the children already understand about our environment and it's awesome knowing that the next generation will continue to build on what has been achieved.

In addition, Professor Dave Towns presented at The *Pepper Tree Restaurant* as part of the **Winter Lecture Series**. He talked about his experience and knowledge of seabirds and lizards on Ahuahu (Great Mercury Island). Our last speaker of the year is Keith Woodley from *Pūkoro Mirando Shorebird Centre* who is presenting on the Sunday the 3rd of September. We are only too willing to support the work of the diverse range of local conservationists and interested community members who are doing predator control in their own backyard. Organise a meeting with us, we'd love to discuss collaboration and our joint conservation goals.

Follow us on Facebook
@moehauenvironmentgroup,
contact us at info@meg.org.nz
make a donation by visiting our
website www.meg.org.nz



- Genevieve Morley

SOLD OUT

POP-UP
Colville Creative

Two-day workshop with John Lawry, shaping and working copper to create a vessel. You will learn heating, pounding, shining and buffing.

COPPER VESSEL WORKSHOP



All resources, morning tea and lunch is included.

9am - 4pm, Sat 16th & Sun 17th September

\$25 @Colville cafe, Only 12 places (13yr+)

Briar 022 402 96 81 creative@colvillejunction.co.nz

Local Job Vacancies:

Colville Community Health Trust (CCHT)
Manager (part time – 16 hrs per week)
Financial Administrator (part time – 4 hours per week)

The Trustees of CCHT have the following vacancies

- ⇒ Manager
- ⇒ Financial Administrator

These roles assist the Trustees with the ongoing operational requirements of the Colville Community Health Trust.

Duties include:

- ◆ Tasks and activities that progress the work of the CCHT
- ◆ Fundraising activities and funding applications
- ◆ Financial oversight and financial administration tasks
- ◆ Networking and relationship building

We would really like to hear from a team player/s who are flexible, confident using technology, self-motivated and have an understanding of working in a rural community setting. If this appeals to you, please submit your CV along with a letter expressing your interest. (If you would like to apply for both roles combined in one role that is fine too).





For more information and/or a copy of the Job Description and application form, please email - colvilletrustmanager@gmail.com
 Applications close September 13th.



COLVILLE
 COMMUNITY HEALTH TRUST

NEW SCHEDULE FROM 1 SEPTEMBER 2023 On 1 September 2023 our kerbside rubbish and recycling collection schedules are changing as part of a new solid waste services contract. Your property will be issued with a 140 litre wheelie bin for your rubbish (instead of prepaid blue bags) and a 25 litre food scraps bin (new service). This is in addition to the existing recycling wheelie bin and glass crate service. The new collection schedule will be published on our website tcdc.govt.nz/ kerbside by August 2023. For more information please refer to the FAQs on our website tcdc.govt.nz/solid-waste-FAQs

SEPTEMBER 2023

	Mo	Tu	We	Th	Fr	Sa	Su
					1	2	3
	4	5	6	7	8	9	10
	11	12	13	14	15	16	17
	18	19	20	21	22	23	24
	25	26	27	28	29	30	

COASTAL CARE



Qualified arborist offering large and small tree maintenance and care, tree removal, topping, crowning, and pruning.

Available for seaweed/stone collection and delivery, general landscaping, home and land maintenance, and a large range of jobs, big and small. Feel free to inquire for more information.

To arrange a free quote for a job within the Colville/Coromandel area:

Message or call Liam or Willow: 022 522 53 24



ANNE MOUNTJOY

YOUR LOCAL HELPER FOR
SETTING UP, RUNNING, ORGANISING :

IT Support

- SMARTPHONES
- COMPUTERS
- PRINTERS
- SOFTWARES
- WEBSITES
- EMAILS
- ANY MANY MORE...

ANY ENQUIRIES WELCOME!

📞 022 419 5521

📧 ANNE@CONNECTPM.NET



Precision Tree Care Coromandel

For all your tree removal,
pruning, mulching and
slab milling needs.

Call Alex on 021 0511 153



David Wright

Wright Contracting Services

General & Heavy Engineering including:

- Welding
- Machining/ Fabrication
- Hydraulics
- Machinery Repair/ Maintenance

No job too big or small!

Onsite or at my Colville workshop

Phone: 021 100 2767

Email: dewwrightnz@gmail.com





**Coromandel
Community Acupuncture**

Christina Wu

BHSc—*Acupuncture & Chinese Medicine.*
ACC registered acupuncturist. Taichi teacher.

Colville Community Health Centre on Tuesdays by appointment only
165 Mannion Road, Wyuna Bay Clinic on Mondays, Tuesdays Wednesdays, and Fridays
109 Albert Street, Whitianga on Thursdays

Phone: 021 1134 768 Email: christinawu121@gmail.com
www.corocommunityacupuncture.co.nz

Looking for a Midwife?

I'm an experienced midwife who loves living in the beautiful northern Coromandel. I provide community primary midwifery care and cover the upper and western side of the peninsula from Port Jackson to Manaia, including Colville & Coromandel Town.

Sheryl Wright

Moehau Midwives
Phone 022 500 1310
moehau.midwives@gmail.com
www.birth.net.nz



flyingfingers
SECRETARIAL SERVICES

**Word Processing, Scanning, CVs, Assignments, Manuals, Letters,
Mail Merges, Tender & Contract Preparation**

Call Maureen on: 021 900 938



Before



After

David's Handyman & House Painting Services

Interior & Exterior House Painting
Rot & Gib Repair
Water Blasting or Soft Wash
Deck Repairs & Staining
And much more...

Free Quotes

Contact David Porter Ph: 027 224 8925
email: davidkim@colville.org.nz



Coro Refuse & Recycling Centre

Goldmine Shop

Wednesday & Friday 9.30am - 3pm
Saturday & Sunday 9.30am - 4pm

525 Hauraki Rd, Coromandel 07 866 7616

Handling rubbish, including recyclable items, illegally dumped at the gates of our Refuse Transfer Station (RTS) outside of hours incurs a cost for all our district ratepayers that contributes to driving up the annual rates bill.

1299 Port Charles Road,
Coromandel
07 866 6614



Info@kiwiretreat.co.nz
www.kiwiretreat.com

Accommodation open 7 days

Café & Bar is open from 10am to 5pm, Wednesday to Sunday

Closed Mondays & Tuesdays

Restaurant open with bookings only

This successful small business,
supplying high quality hand tools
for gardeners
Jo & Bryan



For more details please
contact:

shop@gardentools.nz
Ph 021 739 398
www.gardentools.nz

Based in Port Charles



Matt Hobbs
Plumbing & Drainlaying Ltd

www.matthobbsplumbing.co.nz

Quality Plumbing, Drainlaying & Gasfitting
021 0263 4206



Servicing Coromandel Town & Northern Regions

Farm Shop & Cafe
COLVILLE VILLAGE



OPEN ALL OF SEPTEMBER

9am to 3.30pm daily

Spring is finally here and doesn't it feel GREAT!!!!

Pop into the Pickle for a great coffee, sweet treat, beef cut for your dinner or lunch with friends.

We open till 6pm Friday night for your favourite burger and keep an eye out for our live music Friday nights too.



Fridays

Happy Hour 4 till 6pm, kitchen open till 6pm

**100% HEREFORD BEEF BURGERS * HOT CHIPS * COFFEE * HOMEMADE BAKING *
PICKLES 'N' JAMS * LOCAL ART * REAL FRUIT ICECREAM * HEREFORD BEEF**

2318 Colville Road, RD4 COROMANDEL 3584
herefordnapickle@gmail.com Cathy Ward 07 866 6937



Like us on
f Facebook

WHAT'S ON IN NORTHERN COROMANDEL?

Regular events

Tuesdays	Yoga with Kate @ Colville Hall 10am.
Wednesdays	Colville Bay Pre-school's Outdoor Adventure Programme
Thursdays	Enliven (Social Programme for Older People) 10am - 2pm @ Colville Junction
Thursdays	Open Studios - Weekly - Thursdays 9-3pm, (pg11)
Fridays	Wing Chun Kung Fu with Kelvin at Colville Hall, 4pm.
Fridays	Volunteers welcomed to join Colville School's <i>Garden to Table</i> efforts
Sundays	1st Sun of the Month Tennis Club working bee 2 - 4pm

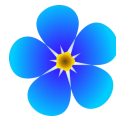


September

Sun 3rd	Keith Woodley from Pūkoro Kororo Miranda Shorebird Centre is presenting as part of MEG's <i>Winter Lecture Series</i> (pg17)
Wed 6th	Youth Group <i>Coro Superstars activity</i> , 3-5pm. Pick Up: Colville Hall. (pg5)
Thurs 7th	<i>Crafternoon Tea with Teuane: Beginners Embroidery</i> , 11am- 2pm (pg9)
Thurs 7th	<i>Colville Safe Kids Workshop</i> , 3.15-4.15pm @ Colville School (pg5)
Fri 8th	<i>Garden to Table Bake Sale</i> , 11am-2pm @ Colville Café.
8-10th	<i>Breathe - A silent meditation retreat</i> with Hedwig Bakker @ Mahamudra (pg7)
Sat 9th	<i>Potty Party</i> , 10am-2pm, Colville Harbour Care Nursery, Wharf Road (pg4)
Sun 10th	<i>Colville Tennis Club AGM</i> , 10am @ the clubhouse (pg5)
Wed 13th	Applications for CCHT roles close. (pg9)
Sat 16th-17th	<i>Copper Vessel Workshop</i> , 9am-4pm @ Colville Café (pg18)
Wed 20th	<i>Cultural Festival</i> in Coromandel. (pg10)

IMPORTANT NUMBERS

111	Fire ambulance, police emergencies needing immediate assistance
105	Police for reporting incidents not requiring immediate response
0800 CRIMESTOPPERS	for reporting crime (<i>anonymous</i>)
0800 611116	for medical advice or information 24/7
0800 044 334	National Sexual Harm Helpline (Text 4334)
0508 326 459	Sexual Harm - Child/Tamariki at risk
0508 828 865	Suicide Crisis Helpline
0800 543 354	Lifeline (<i>Whatever the issue, here to listen</i>)
0800 111 757	Depression Helpline: free text 4202
0800 688 5463	Outline (<i>all-ages rainbow mental health organisation support line</i>)
0800 376 633	Youthline (<i>free counselling services for young people</i>)
0800 764 766	National Poison Centre
07 8666618	Colville Community Health Centre
07 8666 815	Colville School
07 8666805	Colville General Store
07 8668 319	Colville Bay Pre-school
07 866 8702	Coro pharmacy M - F 8.30am - 5pm; Sat 9am - 1pm



ALCOHOLIC DRUG HELPLINE: Free & Confidential 9am to 10pm everyday **0800 787797**
Open friendly meeting. Anonymity assured, please phone **021 314 467**