

# PĀNUI

FEBRUARY 2018

Newsletter



PHONE: 07 866 6920

[cssc@colville.org.nz](mailto:cssc@colville.org.nz)

HOURS: 9am - 3pm

MON, WED, FRI.

10am - 3pm TUES.

2311 Colville Rd, Colville.

[panui@colville.org.nz](mailto:panui@colville.org.nz) [www.cssc.net.nz](http://www.cssc.net.nz)

Kia ora,

Yes the second month already. Hope we are all keeping cool calm and collected, ready for a positive year ahead, which will probably go just as fast as the last one! .

### Guidelines for Panui Contributors

**Deadline** for contributions to the MARCH ISSUE is: **SUNDAY 18th February.**

Email your news, notices, advertisements, jokes, recipes, dreams, handy hints. Send images as jpeg, pdf, word, pages & open office document, or post, phone or drop into CSSC. Contributions welcome, though not always used. CSSC may edit contributions. For our advertising rates, see our website: [cssc@colville.org.nz](mailto:cssc@colville.org.nz)

**Getting the Panui if you live outside the free delivery area**

For an electronic copy: email us with 'subscription' in the subject line. For a mailed copy: email/phone us. Subscription cost is \$20 per annum. Contact us on 07 866 6920 Email - [panui@colville.org.nz](mailto:panui@colville.org.nz)

**Disclaimer:** *The opinions expressed in this publication are not necessarily those of CSSC.*

## Are you a parent, grandparent, aunt, uncle or family friend of a child with some challenging behaviours?

Register your interest:

IY Parenting Programme 2018

**P- 866 8358 e- [cilt@dilt.org.nz](mailto:cilt@dilt.org.nz)**

Coromandel Independent Living Trust

**The IY programme:**

- Strengthens adult-child relationships
- Reduces problem behaviours
- Practices strategies to manage behaviour
- Promotes children's development

**Starts: Thursday 1 March 2018**

**Details: Coromandel town  
5-8pm (with a light kai)**



Next CSSC monthly Trustee meeting: **Tuesday 20th February at 3pm.**

*Colville Social Service Collective (CSSC) would like to gratefully acknowledge the following funding organisations: NZ Lottery Grants Board, COGS, Creative New Zealand, Trust Waikato, Ministry of Social Development, The Tindall Foundation, Len Reynolds Trust, A.N.Z Staff Foundation, Coromandel Bizarre Trust, Child Youth and Family, NZ Creative Communities, Ministry for Culture & Heritage, Waikato Regional Council, Sky City Hamilton, Dept of Internal Affairs, Thames Coromandel District Council.*

## HIMALAYA SHOP

Hi everyone,

We are still open **every day** in February.

Our hours are 10am to around 4pm.

Cheers Rob & Anette.

Shop phone 866 7224

Anette 021 139 7838

ph 07 866 6865

## Position available CSSC Coordinator & Community Developer

This position involves coordinating the day-to-day management of CSSC including financial management, funding applications, overseeing projects and mentoring staff, and leading community development; and reports to a supportive Trust Board. This position is based at the CSSC Community Centre in Colville and is a **part-time position** (22 hours/week).

If you have relevant qualifications and experience, and a passion for working to support your community, we would love to hear from you.

### Person specification:

Desired skills attributes, knowledge and skills include:

- Proven skills in management, leadership, development and implementation of budgets & building strategic relationships
- Proven ability to meet milestones and deadlines, work with diverse groups of people, handle conflict and difficult situations
- Commitment to professional development & the Treaty of Waitangi
- Computer skills, including MAC, emails, internet, Word, & publishing tools.
- Knowledge of the wider Colville community and experience in community development and/or social services, an advantage.

For further information and/or a Job Description, contact Bronwyn Blair (Chair) 021 2675314 or email [csscchair@colville.org.nz](mailto:csscchair@colville.org.nz) or visit <http://www.cssc.net.nz>

**Applications close TUESDAY 13th FEBRUARY 2018, at 12pm.**

**Senior Net:** Will resume on Wednesday 14<sup>th</sup> February at Colville Café. After that every second Wednesday so 28<sup>th</sup> February then again on Wednesday 14<sup>th</sup> March beginning at 10am.



## COLVILLE KAI BOX

Frozen Meals delivered to your home  
by Rural Delivery.  
Every two weeks  
up to 14 meals per delivery. \$12 per meal.  
Contact Roy Fraser [cdw2@colville.org.nz](mailto:cdw2@colville.org.nz)  
021 0599 663 or 07 866 6920 Mon-Wed 9am-3pm

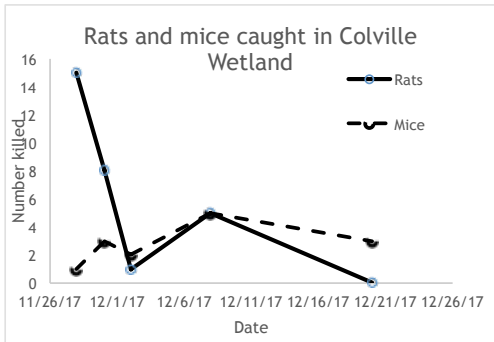


**COLVILLE HARBOUR CARE**  
Te Umangawaha o Nga Waka

*"The communities of Colville working together to create a healthy harbour now"*

**Pest control**

Our first 42 traps were opened in November and a month later our catch rate for rats was zero! We will complete another round of monitoring to make sure they are not just avoiding the traps. The mice are a bit trickier but thanks to our double bar trap design we can catch them too. We will be extending the trap lines around the wetland towards the school and west along the coast to the dotterel breeding site. Great to see baby oyster catchers on the foreshore this summer!



**Pipi die off on the foreshore**

Thank you to those who let us know about this. We have been in touch with council and NIWA to identify the algae and its cause. So far they have suggested that it is likely due to warmer than normal temperatures and subsequent low flow rate in rivers meaning the harbour does not get so thoroughly flushed. The algae is yet to be identified. If anyone has any information on this please let us know.

**Agave on the foreshore- clarification**

We have received several calls about the cutting down of the large agave plants on the Colville Bay foreshore. Colville Harbour Care would like to clarify that we were not responsible for this. The land is managed by TCDC and their contractors. Any concerns or feedback should be directed to the TCDC parks and reserves department.

**Working bees for 2018**

We are currently developing a plan for our 2018 working bees. Please look for our 2018 Annual Working Bee Planner in the March Pānuī. If you would like text or email reminders about working bees, please contact Beth (see below).

**Register your cat**

We will be doing live capture cat trapping around Colville Harbour to protect our breeding birds. Please send us a picture of your cat along with its home address and your contact details, so we can make sure no harm comes to your pet.

**Contact:** Beth at CSSC (Weds-Fri)  
p- 07 866 6920 e- [chccoordinator@colville.org.nz](mailto:chccoordinator@colville.org.nz)

**CHILDREN'S FUN DAY SUNDAY 4th MARCH**

Celebration still to be finalised.

Watch out for posters with the details .



COLVILLE SOCIAL SERVICE COLLECTIVE SUPPORTING THE FAR NORTHERN  
COROMANDEL COMMUNITIES

# The Colville Project

**Want to know more  
about where it's at?**

## COMMUNITY WORKSHOPS

*Come along to one of our community  
workshops*

**SUNDAY 4 FEBRUARY**

**For more details check out :**



@thecolvilleproject  
[www.thecolvilleproject.nz](http://www.thecolvilleproject.nz)  
[thecolvilleproject@gmail.com](mailto:thecolvilleproject@gmail.com)

**Donations payable to: The Colville Project**

**Account # 38 9007 0484491 06**

**Please quote reference: TCP – land purchase – your name**



**COLVILLE SOCIAL SERVICE COLLECTIVE SUPPORTING THE FAR  
NORTHERN COROMANDEL COMMUNITIES**

**Learning Space A new year!**  
Do you want to study via distance learning?

Studying by distance and online learning means you don't attend classes, lecturers or tutorials. Instead you have the flexibility to decide where and when you'll study, and can plan your studies around the rest of your life.

**Who offers distance learning courses?**

- Open Polytechnic offers most of their learning courses online.
- Massey University offers multiple distance learning courses – searching distance learning courses came up with 471 results!

Some Te Wānanga o Aotearoa **FREE** courses you can study from home:

- He Huarahi Ako - A Learning Path: NZ Certificate in Foundation Skills
- He Papa Tikanga: Certificate in Tikanga Māori
- Mana Ora: NZ Certificate in Māori Business & Management

**Where can I learn?**

- CSSC has the caravan space that can be hired out for a quiet, private space to study. Internet and power are both accessible from the caravan. There is also a laptop and computers available.
- Study from home

Want more information? Looking for a course? Need help with enrolling? Want to get a group together to learn with? or arrange hiring the CSSC caravan as your learning space? – contact Anna at CSSC, [cdw1@colville.org.nz](mailto:cdw1@colville.org.nz), 07 866 6920 or pop in Tuesday or Wednesday.

**Commemorating Waitangi Day 2018**

**When:** Saturday 10<sup>th</sup> February  
1.30pm - 5.00pm

**Where:** Old Wharf Road  
Otautu Bay  
Colville

**Note:** Koha/ Donations accepted

**T e U m a n g a w h a O N g a W a k a**

Come along and join in our annual Waitangi Day event, try waka ama in modern canoes with a specialist providing instructions, share a bbq and hot drinks afterwards while we discuss each other's perspective on the Treaty of Waitangi and reflect on the days activities and fun!!

You will need your togs or clothing suitable for getting wet at the beach, as well as your usual sun protection, hats, towels, blankets etc...

Life jackets will be provided, this is an all ages event, give it a go!!



Organised  
Funded and  
Supported  
By



Ministry  
for Culture  
& Heritage



countdown



From Friday  
30th March 2018  
to  
Monday 2nd  
April

So, Easter looms, all is organised and confirmed.

Kicks off with '**Colville Sings the 60's**'. 20+ items are planned.

**Good Friday, March 30th at 8pm** - teens up - \$20 Entry, supper provided.

It will be **SHOW TIME** this time !! So dress up 60s and join in.

You can be a Beatnik, a Bodge, Widge, Teddy Boy, a Mod, a Rocker, Biker or even a Hippie.

YAY ! In other words - a lot of fun !

**Saturday, March 31st starting at 6pm** - \$20 entry, kids under 16 free

'**The Big Music Night**' we have four acts for you:

**Madly Irie** - 4 fabulous Women from Gizzy.

**Shimna's List** - 4 piece Auckland Group, Celtic Irish Folk.

**Dual** - Psychedelic-dance duo.

**Racing** - 4 piece Hypnotic groove-based rock and roll with touches of English big beat.

Yummy Food will be available to purchase.

**Sunday April 1st starting 5.30pm** \$20 Entry kids under 16 free

'**Auckland Playback Theatre**' coming to do a full show. VERY entertaining.

funny, serious and surprising.

Preceded by '**The Bubble Show**' !!! Be put inside a bubble. Kids will love it,

you will all love it. He recently put Jacinda in a bubble...

Finger food will be provided.

**Workshops:** Pounamu presentation, **The Art of Dying Anything,**

**Harakeke Dying, Little Clay Creations, Leather.** More details and info at CSSC and website.

Register early, numbers are limited.

**Sculptures** will be presented by various artists around town.

All events will be in or next to the hall. Professional sound and lighting.

**Early birds tickets available at \$50 for the 3 nights available till Wednesday March 7th.**

[www.colvilleartsfestival.co.nz](http://www.colvilleartsfestival.co.nz)



# Colville Community Health Centre

2299 Colville Rd, RD 4, Coromandel 3584

Phone 07 8666618. Fax 07 8666619

Mon Tues & Thurs 9.00am – 5.00pm / Wed 10.00am - 5pm Fri 9.00 am – 4.00 pm

7<sup>th</sup> and 21<sup>st</sup> February 10.00am - 1pm - Dr Clinic at Port Charles

For after hours service phone the clinic number 07 866-6618.

The On call person will be paged by the after hours service.

If it's an emergency, dial 111

There is no answerphone service during the hours we are open, please listen to the message carefully.

Our txt number for the clinic is 4335



Hi folks

Hoping you are finding some respite from the heat, and that you are taking extra care when you are out enjoying the sun.

With the summer comes the bugs and one in particular has been 'making its mark' on locals - the white tail spider. We have seen quite a few people who have been bitten lately. It is a good idea to keep some White Tail Spider remedy in your first aid kit. This is taken orally and it can be applied to the affected area as well.

We have received some feedback from you over the last six months. A big thanks to all who completed the survey. It is important to let you know what has been identified for us to pay some attention to. Information about our after hours availability and what the side effects of some medication could be are two areas identified for us to improve on. It was also highlighted that information for some people, needs to be given in a way that is more easily understood. We will also be looking at our wait times at the clinic. Though this wasn't highlighted in the survey results, we are aware this can be an issue for some people. As always, we do welcome your feedback at any time and if visiting us in the week of the 12 – 18 of February you will be invited to participate in the next Patient Experience Survey by our receptionists.

Just letting you know the practice has around \$10k in unpaid fees that are 3 or more months overdue. We will be following up on any outstanding accounts in February. If you owe the clinic money, please make an effort to come and settle your account before we have to contact you. We are happy for people to make automatic payments, so do talk to the staff if you'd like to take up that option.

Till next time, enjoy the summer days.

The team at Colville Community Health Centre

**COASTAL**  
SMALL ENGINE SERVICES

TRADE CERTIFIED  
**SALES - SERVICE - REPAIR**  
**OF SMALL ENGINE EQUIPMENT**

165 Wharf Road Coromandel Town  
SERVICING COROMANDEL PENINSULA  
Shane 021 0238 0347 Paddy 021 662 920

We are situated across from the bottom pub

ADMIRALS ARMS

**Efficient Builder**  
No job too small.  
Immediate Start.

Phone 021-0821-3324

Seamus, Osborn and Lorna welcome beautiful

**GALA MARGAUX EBBS**  
Born in Hamilton on  
January 3rd 2018





## FARM SHOP COLVILLE VILLAGE

100% HEREFORD BEEF BURGERS \* HOT CHIPS \* COFFEE \* BAKING \*  
PICKES 'N' JAMS \* LOCAL ART \* REAL FRUIT ICECREAM \* MEAT

2318 Colville Road, RD4 COROMANDEL 3584  
[herefordnapickle@gmail.com](mailto:herefordnapickle@gmail.com) Cathy Ward 07 866 6937  
[www.kairauMATIpolledherefords.com](http://www.kairauMATIpolledherefords.com)



Like us on

Like us on facebook

## Relax & Revive Coromandel

[www.relaxcoro.co.nz](http://www.relaxcoro.co.nz)

Certified Massage Therapist

Relaxation Massage

Jan is working from the tranquil surrounds  
of the Tangiaro Kiwi Retreat, Port Charles

By appointment

Email: [info@relaxcoro.co.nz](mailto:info@relaxcoro.co.nz)

Ph 021 268 6198



## Tangiaro

Kiwi Retreat

## UNDER NEW MANAGEMENT!!!

Welcoming Peter & Jeanette

Meals \* Gourmet Burgers \* Pizza \* Coffee \* Muffins  
Craft Beer

Café & Bar Opening hours:

Monday - Closed

Tuesday to Saturday

Lunch 10am - 3pm Dinner 5pm - 9pm

(Bookings advised for Dinner)

Sunday: 10am - 5pm

1299 Port Charles Road,  
Port Charles Coromandel

Phone: 07 866 6614  
[www.kiwiretreat.co.nz](http://www.kiwiretreat.co.nz)



## **Colville Bay Pre-School**

Colville Bay Pre-School will begin Term 1, 2018 on  
**Tuesday 30th January.**

We are open on Tuesday, Wednesday, Thursday and Friday's  
from 9.00 to 3.00

New enrolments welcome!

20 free hours ECE and WINZ subsidies available.

Phone 07 8668 319 or email [colvillebay.elc@xtra.co.nz](mailto:colvillebay.elc@xtra.co.nz)

Sympathy and condolences go out to all the family and friends of

### **ALAN MACDONALD**

*Who died suddenly and peacefully on his morning walk.*

on 8th January 2018 aged 91 years.

*We will all miss the "mad fencer".*

Sympathy and condolences go out to the family and friends of

### **THOMAS RICHARD LITTLE**

Who died unexpectedly on December 28th 2017 in his 80th year.

Sympathy and condolences go out to the family and friends of

### **ROB ASHBY**

Who passed away on 2nd January at 1 am. 90 YEARS, 1 day & 1hour old.

Bryan: 021 799 056

[www.gardentools.nz](http://www.gardentools.nz)

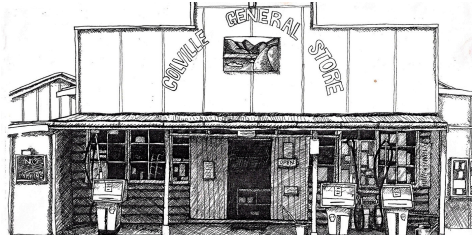


Joanna: 021 739 398

**LIFETIME GUARANTEES**

### **ALCOHOLIC DRUG HELPLINE**

FREE and CONFIDENTIAL 9am to 10pm everyday **0800 787 797**  
Open friendly meeting. Anonymity assured. Please phone 021 314 467



Phone 07 866 6805  
Fax 07 866 6849

2314 Colville Road RD 4, Coromandel [colvillestore@colville.org.nz](mailto:colvillestore@colville.org.nz)

***COLVILLE STORE HOURS:*** 8am - 6pm. Sat - Thurs. Fridays 7pm  
*After Waitangi weekend :* 8.30 - 5pm. Sat - Thurs. Fridays 6pm  
Wow what a wonderful summer we're having. The fisherpersons are reeling. The bee workers are buzzing. Our health workers are running. Our social team are humming. We at the Store are stocking and our tourists are sunning. Let's hope everyone is sunblocking.  
A good range instore for camping, fishing, drinking, eating.  
*Colville store can't be beating!* Keep safe and thanks to our lovely locals for your good cheer. To all from us **HAPPY NEW YEAR .**

*Northern Coromandel  
rubbish days until 9th  
February 2018*

Tuesday



Friday



We only collect glass left in official Council crates

**Summer Weekly Kerbside Collection**

STARTS 26 December 2017

ENDS 9 February 2018

[www.tcdc.govt.nz/kerbside](http://www.tcdc.govt.nz/kerbside)



Please put your kerbside collections out by 9am.  
We only collect glass left in official Council crates.

## **Coro dump & GOLDMINE SHOP**

hours:

Mon, Wed, Fri, Closed  
Tues & Thurs: 11am - 4.30

Sat & Sun: 11am - 5.30

Public hols: 11am - 5.30

***OPEN EVERY DAY 18 DEC - 25 FEB***

525 Hauraki Rd, Coromandel.  
07 866 7616

**Colville Community Cafe**

We will be open **EVERY DAY** except Mondays from 9am -3pm . Organic baking every day - bread, muffins and more tasty delights.

**PIZZA EVERY FRIDAY and SATURDAY NIGHTS**

**BILLY T.K. SENIOR** Playing at the cafe on 15, 16, 17th FEB. From 7pm.

**Colville Music Club**

**A.G.M.**



John Rabarts won the raffle for a meal at the **UMU** Cafe. Congratuatuations!

Saturday 17th Feb



at 1pm



**D & K**  
HOME IMPROVEMENT  
HANDYMAN  
Ph. David 866 7788



email: davidkim@colville.org.nz

**CAR** : Nissan Liberty 2002, 7-seats. Around 150,000km. Regularly serviced. WOF 'til June 2018, Rego 'til July 2018. \$2.700 Ph 021 267 5314.

**FOR SALE** *RINNAI GAS COOKER WITH GRILL \$90,*  
*Enquiries: CSSC 07 8666 920*

**" Clay Time"**  
Anybody interested in clay work?  
We meet at the *Colville Cafe* first Tuesday every month,  
**6th FEBRUARY** at 12 noon  
Cheers, Tewhanoa.



## SITUATION VACANT

### **Part-time Coordinator Position**

The Trust is seeking a motivated, flexible and capable person who is committed to working in the Colville community..

The ideal applicant will have:

- A can do attitude with an openness to try new things and learn on the job
- Excellent verbal and written communication skills - a "people person"
- Previous experience in administration and community based work
- Understanding of fundraising and budget management processes
- A reasonable level of Computer literacy
- A willingness to self manage, work as directed by and alongside governance.

For further information and a copy of the Job Description please contact

[colvilletrustmanager@gmail.com](mailto:colvilletrustmanager@gmail.com)

**Closing date: Friday 16 February 2018**

Suicide Crisis Helpline: 0508 828 865 (0508 TAUTOKO) Lifeline: 0800 543 354

Depression Helpline: 0800 111 757 free text 4202

Outline: 0800 688 5463 Youthline: 0800 376 633

## COROMANDEL

HOME GROWN  
COMMUNITY MARKET

**OPEN 8.30 - 1PM EVERY FRIDAY**

Beside the BNZ Bank

For stall info contact Michelle 022 653 0690

Herbal remedies

Fresh Produce

Seedlings

Art and Crafts

Homebaking

Handmade Gifts

Cakes and Slices

Free Range Eggs

Chutney and Pickles

Fresh Bread



The children found the trip the highlight of their holiday”, feedback we received after the completion of the summer program. Over 600 visitors and locals learnt about MEG’s conservation efforts, took part in night adventures, kiwi encounters, learnt how to teach their dog how to recall from birds on the beach and partook in practical sessions of Te Rongo Maori among other activities. Guided by Jamie Watson, the Te Rongoa Maori participants learnt the five most dangerous plants and how to identify them as well as how to find a meal from a cabbage tree, just in case you’re ever caught short in the bush. During a nocturnal walk at Waikawau whilst looking at Puriri moth and weta population, the group was interrupted by a calling male kiwi, to the delight of the campers.

Great Mercury Island proved to be another highlight for many. On the way out to the island the boat was surrounded by a group of dolphins, a first encounter for many members on the trip. Once on the island we were treated to a spectacular walk through varying terrain and stunning coves learning about the challenges being faced to keep the island pest free and the balance with visiting boaties. The pest control plan on the island is very different from the large landscape scale operation that MEG manages, yet many of the challenges are the same. The island is currently in its “wait and see” five year period after the pest eradication operation in which the biodiversity and specific species are being closely monitored to see how they are progressing before re-introducing any further species. On the islands behind Great Mercury, after being found to have only three left, a successful breeding program of the tusk weta was hailed as a positive start to the reintroduction and translocation of this safe haven in the near future. Fledgling king fisher and kaka nests proved to be a surprise when braving the steep hill on the walk.

After requests from the community to have dog aversion training in the northern area we were forced to abandon the kiwi aversion training in early Jan. We are now holding the next **TEACH YOUR DOG TO AVOID KIWI** session on Saturday 27th January, behind Knox Cottage, Waimanu Road, Waikawau bay from 9-12am.

Please phone Kauaeranga Visitor Centre on 07 867 9080 to book your place. Please support this training so we can ensure we have more trainings in our areas in the future and be responsible dog owners

**Ally Davey-Diesterbeck** General Manager

Office: 07 8666 962 Mobile: 021 0290 0507 [www.meg.org.nz](http://www.meg.org.nz)



We hope you've had a chance to take advantage of our summer programmes to help develop more happiness and peace in your life. We've got more good things coming up, and this is the last foreseeable time we'll have Ven. Yönten here for the whole summer season, so don't miss out!

### **With Ven. Yönten**

2-4 Feb. Learning from Difficulties: 8 Verses for Thought Transformation

9-11 Feb. How to Die Happy

16-18 Feb. What Goes Around, Comes Around: Intro to Karma and Meditation

### **With Sarah Brooks**

9-11 March Mindful Photography

23-25 March Meditation for a Calm and Happy Mind

**Save the dates: 15-24 June Venerable Robina Courtin returns!** (Details are on our website.)

We deeply regret that we will be unable to offer our annual Family Fun Day when we enjoy the company of the whole community for a day of music and activities. We do plan on having it again next year, though, and aim to make it very special!

We encourage members of the local community to come to our courses and retreats, so offer them to you on a donation basis to make them accessible to all.

Pre-registration is still essential – contact us at

[retreat@mahamudra.org.nz](mailto:retreat@mahamudra.org.nz) or 866 6851

**2183 Colville Road**

**[www.mahamudra.org.nz](http://www.mahamudra.org.nz)**



## **BACK ROOM GALLERY**

Artist Co-op Open Daily 10am - 4:00pm  
2314b Colville Road  
Colville, New Zealand

A range of beautiful and unique art from Colville artists, from baskets to pottery and lots in between. Located behind the Colville Cafe. Stop in, say hello to one of our artists manning the desk, and enjoy the creativity.



The first to  
apologize is the  
**bravest.** The first to  
forgive is the  
**strongest.** The first  
to forget is the  
**happiest.**

## EVENTS CALENDAR

Whats on in February guide

### Regular Events:

Tuesdays 10-12 **Yoga at the Colville Hall**  
**Colville Wholefood Cafe OPEN Every day except Mondays 9 - 3.**

### January Events

Saturday 27th **Teach your dog to avoid kiwi 9-12 Waikawau Bay.**  
Wednesday 31st January **Blessings at Waitete Bay [www.mahamudra.org.nz](http://www.mahamudra.org.nz)**

### FEBRUARY Events

Sunday 4th February **Community Workshops** - Colville Project.  
Weekend 2 - 4 February **Learning from difficulties: 8 verses thought transformation.** Mahamudra  
Weekend 9 - 11 February **How to die happy.** Mahamudra Centre.  
Wednesday 14th Feb 10 am **Senior Net** at the Colville Cafe  
Weekend 16 - 18 Feb February **Intro to Karma and meditation.** Mahamudra Centre.  
Tuesday February 6th **Clay Time** 12 noon. At the Colville Cafe  
Saturday February 10th **Waitangi Day Celebrations** Otautu Beach 1.30.  
Saturday February 17th 1pm **Colville Music Club AGM**  
February 15, 16, 17th. **Billy T.K. Senior playing** at the Colville Cafe 7pm  
Sunday 18th February **Panui cut off date**  
February 20th 3pm **CSSC Trustee Meeting**  
Wednesday 28th February 10 am **Senior Net** at the Colville Cafe

### March Events

Weekend 9 - 11 March **Mindful photography** With Sarah Brooks. At the Mahamudra Centre.  
Wednesday 24th March 10 am **Senior Net** at the Colville Cafe

Weekend 23 - 25 March **Meditation for a calm and happy mind.** With Sarah Brooks. Mahamudra  
Friday 30th March - Monday 2nd of April **Arts Festival begins.**



If you would like a listing on the Panui events calendar, email the Panui Editor:  
[panui@colville.org.nz](mailto:panui@colville.org.nz)