

— PĀNUI

JUNE 2019

Newsletter

2311 Colville Rd, Colville.



PHONE: 07 866 6920 cssc@colville.org.nz

HOURS: 9am - 3pm MON, WED, FRI.

10am - 3pm TUES.

panui@colville.org.nz www.cssc.net.nz

Tena Koutou,

Having made it through a pretty mild May we will be officially entrenched in winter shortly. A few events coming up: we look forward to the spectacular, sparkling canopy of Matariki, the stars have been so brilliant lately.

Guidelines for Panui Contributors

Deadline for contributions to the **JULY** issue is:
SUNDAY 16 JUNE



Email your news, notices, advertisements, jokes, recipes, dreams, handy hints.

Send content as word, pages & open office document (not PDF), or post, phone or drop into CSSC.

Contributions welcome, though not always used. CSSC may edit contributions.

For our advertising rates, see our website: cssc@colville.org.nz

Getting the Pānui if you live outside the free delivery area:

For an electronic copy: email us with '*subscription*' in the subject line.

For a mailed copy: email/phone us. Subscription cost is \$25 per annum.

Contact us on 07 866 6920

Email - panui@colville.org.nz

Disclaimer: *The opinions expressed in this publication are not necessarily those of CSSC.*

Next CSSC monthly Trustee meeting **Tuesday 18 JUNE at 3pm.**

Colville Social Service Collective (CSSC) would like to gratefully acknowledge the following funding organisations:

Lottery Grants Board, Ministry for the Environment, Oranga Tamariki, Len Reynolds Trust, Waikato Regional Council, Community Organisation Grants Scheme, Trust Waikato, Ministry of Social Development, Creative Communities New Zealand, Ministry for Culture & Heritage, Department of Conservation, World Wildlife Foundation, Thames Coromandel District Council, Sky City Hamilton, Rural Communities Trust, The Tindall Foundation, Coromandel Bizarre Trust.



Come find a gorgeous piece of second hand clothing at the Queen's Birthday Market in the Colville Hall- we're having our own stall there!

A HUGE thank you to the wonderful Roy and Khongor for mowing CSSC's lawns over the last couple of years. We're very grateful!! If any one would be happy to do them at all we would be very appreciative. Please just ask Larisa, CSSC Coordinator.



**Got ideas and prepared to be a voice
for your community?**



CSSC is welcoming interest from people wanting to join our great Trustee team.

For more information email csscchair@colville.org.nz



**The Colville
Project**

www.thecolvilleproject.nz

We've been working with Beca on our concept design, discussing the relationships between the proposed buildings and nature to encompass the project vision. It's progressing nicely and we'll be providing further updates on our FaceBook and Website as the design takes shape.

We have also been very fortunate to receive a very generous \$35,000 donation from a kindly benefactor. We are supremely grateful for this amount.

Did you know you can claim tax credits on your donations ?
Individuals can claim a 33.33% tax credit for all donations over \$5 they make to an approved donee such as The Colville Project and donations made through Payroll Giving are also eligible for tax credits of 33.33%.

Don't hesitate to get in touch if you have any ideas, queries or concerns, we love to get your feedback. Pamela will be at the Colville Market on Queen's Birthday, she has some amazing Elvis and Barbie figures for sale with 50% of the proceeds going towards project costs.



Introduction to the Treaty of Waitangi Workshop

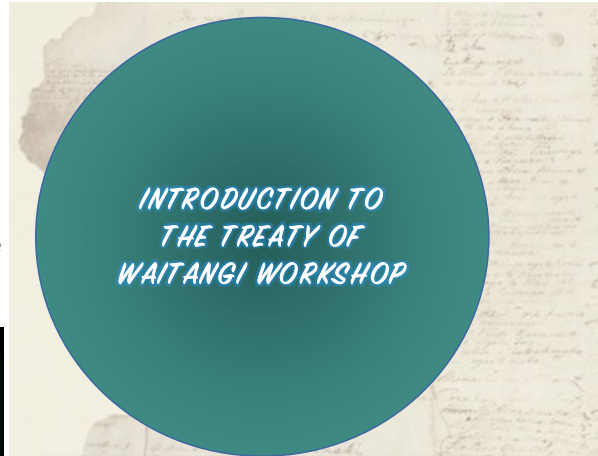
FRIDAY 19 JULY COLVILLE

9am - 4pm * \$20

ALL WELCOME

WORKSHOP CONTENT:

- Context – factors that lead to the signing
- The Declaration of Independence
- Comparing and contrasting the Treaty texts
- Processes and effects of colonisation
- The claims settlement process
- Biculturalism and multiculturalism
- Personal and institutional issues in the workplace
- Setting goals towards bicultural competence.



How to book?

Contact Colville Social Services (CSSC):

- Phone (07) 8666 920
- Email cssc@colville.org.nz
- Or pop into CSSC

Youth group news

This term we are pleased to offer:

Clay work with Sam Ireland. Fishing with Nathan.

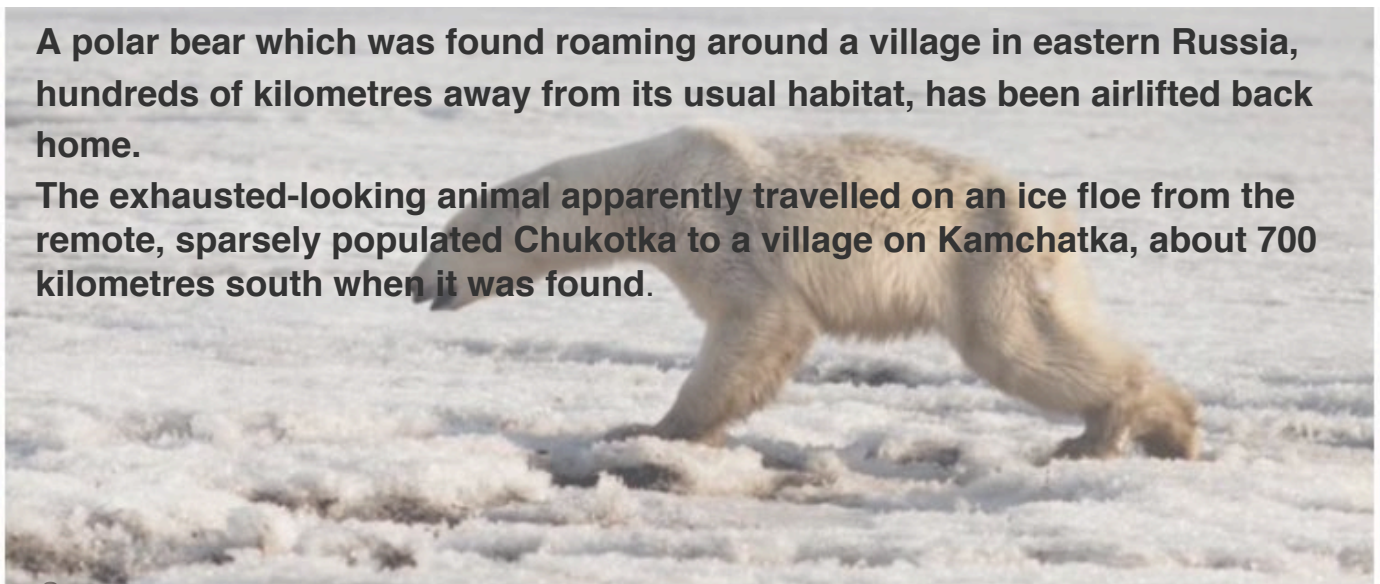
Thankyou to the parents/whanau who volunteer their time to support our youth .

Elizabeth & Nathan



A polar bear which was found roaming around a village in eastern Russia, hundreds of kilometres away from its usual habitat, has been airlifted back home.

The exhausted-looking animal apparently travelled on an ice floe from the remote, sparsely populated Chukotka to a village on Kamchatka, about 700 kilometres south when it was found.



Colville Harbour Care



Vision: "a healthy and thriving Hauraki Gulf"

Mission: "the communities of Colville working together for a healthy harbour"

IT'S WORLD OCEANS DAY ON JUNE 8, what better time to celebrate our oceans and give something back. We are so lucky to be surrounded by the largest ocean on the planet, the Pacific. The Pacific Ocean covers about a third of the Earth's surface and contains half of all the Earth's ocean water. More than 60% of the fish consumed by people are caught in the Pacific Ocean.

The impact of humanity on our oceans is becoming increasingly apparent. In Colville, we are very aware that our bay connects us to Tikapakapa Moana (Hauraki Gulf), Moana Nui a Kiwa (Pacific Ocean), and the rest of the world. Tikapakapa Moana has 25 species (nearly a third), of the world's marine mammals living or visiting here. It is also a very important area for seabirds in New Zealand and the world. Over 70 (approximately 20%) of the world's seabird species have been seen here.

In celebration of how incredible our oceans are, Colville Harbour Care, in association with Colville Social Service Collective, is hosting two fun events in Colville this June.

UPCOMING EVENTS



World Oceans Day QUIZ NIGHT at Foragers Kitchen.

Saturday 8 June 5:30pm

with special guest **Mike Donoghue**, Pacific Whale Researcher. Mike will present on the fascinating marine life in Tikapakapa Moana. **Quiz prizes include:** 2x Adults Passes for 1 hour Hahei Explorer Cathedral Cove Boat Tour (\$190 RRP), eco-sourced native plants and more...

Tree Planting Day – bring a spade! Saturday 15 June 9am – 1pm Be involved in the future wellbeing of the Hauraki Gulf. **Lunch provided.** Follow us on Facebook and keep an eye out for posters to get details on location **@Colville Harbour Care**

How does planting trees help the ocean? What we do on the land has a remarkable effect on the ocean. Planting trees on river edges helps to stabilise the banks, capture nutrients, and reduce erosion and the subsequent washing of soil into our coastal environment. Planting trees slows water flow over the landscape and catches soil washed from hillslopes to prevent it reaching the ocean. Too much sediment can decrease water clarity, damage fish gills, smother shellfish habitat and reduce light, leading to decrease in phytoplankton at the bottom of the food chain.

VOLUNTEER VACANCY - Stream Monitoring in July

We are seeking volunteers to help for 1-2 days to monitor the health of our rivers and streams around Colville. If you are interested please contact Beth.



QUIZ NIGHT

WITH SPECIAL GUEST SPEAKER
WHALE RESEARCHER – MIKE DONOGHUE

SATURDAY 8 JUNE 5:30PM
AT THE FORAGERS KITCHEN
FREE ENTRY



BRING YOUR TEAM AND WIN AWESOME PRIZES!
INCLUDING 2X ADULTS PASSES FOR 1 HOUR HAHEI EXPLORER CATHEDRAL COVE BOAT TOUR!!!

WOODFIRED PIZZA FROM 5PM



Proudly brought to you by



Contact Beth at CSSC (Wed-Fri):

p- 07 866 6920

e- chccoordinator@colville.org.nz

Colville Fire Brigade news 20.5.2019

Ever considered becoming a community volunteer? Is navy blue and yellow your fashion combo of choice? Do you want to ride in Colville's most recognizable red truck? Colville Volunteer Fire Brigade are recruiting now.

We are looking for fire crew and support staff to take up the challenge in providing Colville and the surrounding area with a professional first responders team who work collabotatively with St Johns, Police, Westpac Helicopter Rescue Service, AirWorks Coast guard, District Fire Brigades and the greater Coromandel community.

Enrol now to register in one **FULL DAY MEDIC CO-RESPONDER WEEKEND COURSE** at the Colville Hall. Weekend of 20/21 July

Contact Bazza Ross, CFO Colville Brigade : 021 0858 4243 bazzachief1@gmail.com.



Youth Sailing Academy Colville

Thank you to all those who came and made our AGM such a lovely time! Welcome to our new sailing club members: Lena, Anita, Larisa, Billy, Briar, Jane, Emma and Linda. And special thanks to Briar and Anita for joining the committee.

We talked about many things, including finding funding for a custom made sailing trailer, to our next screenprinting working bee so you can support us by buying awesome tea towels and T-Shirts.

Our next family sailing day will be on **Sunday 23rd June, meeting 10am at Otautu**. We'll aim to have a chance for parents to have a turn on the water too. Bring a picnic, adults your own wetsuits, and warm jumpers and jackets for the kids to wear on and off the water.

Any questions or to sign up for the sailing day, text/ call Ruby on 0221027414. rbyjpowell@gmail.com





COLVILLE COMMUNITY HEALTH TRUST

Hello everyone, I promised last month to report on our Anzac Day Breakfast. It was a beautiful service on a cold clear morning, and we loved being involved in such an important event in our community. We raised over \$500 for the new building, and we want to thank the attendees for their generous support. Thank you as well to our trustees and the team of First Responders who volunteered their time and made it a success.

Looking ahead, we will have a table at the Queen's Birthday Weekend Community Market at the Colville Hall, on 1 June, with some interesting items for sale, plus home baking and lots of raffles with GREAT prizes, including a hand-made stained glass window, and gift certificates to Coromandel Peninsula shops and accommodation providers. All proceeds go to the Health Trust for our building fund. We hope to see you there.

And finally, a short note about making sure your emails get to the right person. The Health Trust email is not shared with the clinic, so to make appointments, make arrangements for records or ask for script refills, please contact the receptionist directly at clinic@colville.org.nz. Thank you.



St John

Here for life

Colville First Response

There are some changes to your St John Ambulance service in Coromandel/Colville District that you need to be aware of:

As from 1st July 2019 this ratepayer-funded subsidy will cease and the residents of the Coromandel/Colville District who were previously transported free to hospital will have to pay \$98 per trip apart from transports for accidents, the cost of which is covered by ACC.

By joining the St John Supporters Scheme you will be transported free by Ambulance anywhere in NZ. The cost is \$65 per couple living in the same house per year, \$50 for an individual subscription or \$85 for three or more people living at the same address.

St John Supporters Scheme Application Forms can be found at Colville Clinic and Colville General Store which then can be dropped off at Coromandel Ambulance Station or online at stjohn.org.nz

Coro Town Information Centre News

Good weather, school holidays, Easter and Anzac Day have certainly continued to keep town busy. Then to top it all off we had the Kauri Run and the Seafood Fest on 4 May, with more great weather making the events fabulous. We were spoilt for choice on food options at Seafood Fest and had great entertainment! It's wonderful to see this festival grow in size and popularity each year.

We've had lots of changes to the inside of the Centre. We have new flooring and the walls have been painted by two of our team members in their own time. Special thank you to Natalie and Lynne, and to CILT for supplying the paint. A special thank you to members of the Work Co-op who moved all the furniture out and back in so we could have new lino laid and the walls painted.

We are now agents for Eventfinda. That's right, you can book all of your tickets to shows, concerts, etc., through us. Stop by and let us be your one-stop booking agent for Eventfinda, InterCity and 360 Discovery Ferry. We now also sell tickets to presentations by Coro Players. We know a lot of you got to enjoy their recent presentation, The Great Piratical Rambustification, with a wonderful cast of local children having a great time!

As a fundraiser for the Centre we now have the new Entertainment Membership books for sale. There are two types available: a book and a digital version. The Waikato/Bay of Plenty book is \$65 and Auckland area \$70. You can also access them online whilst still supporting our centre:

<https://www.entertainmentbook.co.nz/orderbooks/9g60712>. Anyone who orders via this link will help us fundraise, so be sure to share it with your friends and family. This is a great way to receive discounted entertainment. You only need to use 3-4 vouchers for the book to pay for itself. The Entertainment Membership 2019/2020 contains valuable 2-for-1 offers, special rates and up to 50% off on activities, dining, shopping, travel and leisure. This could also be a special gift for you to give to friends or family members.

All community groups: As this is the time many AGMs have been or about to be, please remember to contact us and let us know the new contact person and their details. This way we can help support you and your group with getting your events out there. So, yes I am talking to all of the art, theatre, sport, preschools, environmental groups, RSA, markets and more. Let's work together to keep everyone informed as to what is happening in and around town.

A very special thank you to the Pepper Tree Restaurant and all those who supported the Pizza Sunday through March. We were the charity of choice for March. \$340.00 was raised from all your support.

As we move into winter the InterCity bus does not operate on a Saturday. This is the bus that comes through town around 11.15am from Thames, to Whitianga, Thames and back to Whitianga. It operates Sunday through to and including Friday.

360 Discovery Ferry only operate on a Saturday and Sunday now through winter with the exception of Monday 3rd June Queen's birthday there will be a ferry also.

To our local business community, can you advise us if your opening hours are changing over winter.

Take care, keep warm and talk to you in July.

Sandra Wilson Manager

Open: 10.00am-4.00pm

Phone: 07 866 8598 or 027 521 5560

Email: coroinfo@xtra.co.nz

Website: www.coromandeltown.co.nz

Follow us on Facebook: Coromandel Town Information Centre



COLVILLE COMMUNITY HEALTH CENTRE

2299 Colville Rd, RD 4, Coromandel 3584

Phone 07 8666618. Fax 07 8666619 Our txt number for the clinic is 4335

Mon Tues & Thurs 9.00am – 5.00pm / Wed 10.00am - 5pm Fri 9.00 am – 4.00 pm

5th and 19th June only 10.00am - 1pm - GP Clinic at Port Charles

For after hours service phone the clinic number 07 866-6618.

Please listen to the message carefully.

The On Call person will be paged by the after hours service.

There is no answerphone service during the hours we are open

Remember - If it's an emergency, dial 111



Kia ora koutou

As the nip in the air increasingly hints at winter, it also signals the beginning of the Flu season. We are asking that if you/someone has symptoms and you are coming to the clinic it will be really appreciated if you can alert us that you could be infectious - Please ring before you come. The receptionist is likely to isolate you once you arrive. We provide masks at the front desk too, so to reduce possible spreading of your 'bug', please take one and wear it.

Just letting you know that Diane Hayes who comes highly recommended, and has up till recently been a Senior Homeopath at Lincoln Mall Pharmacy in Auckland, will be holding a clinic on the first Wednesday of every month (when possible). Diane will manage her own appointments but will see people at the Colville clinic. If you would like to make an appointment contact her on 09 8107 155, and leave a message. Diane will get back to you.

Last Panui we mentioned a surcharge for Urgent prescriptions - it will cost \$20 for a script request that is needed in under 48 hours. (Usual cost \$10). This has come about as many people ring on the day their pills run out for a new prescription. This turn-around time is not always possible, so please take responsibility to get in early and avoid the extra cost.

A wee reminder that it is your right to have someone with you when you attend your appointment at the clinic. It is also fine to ask for one of the clinic staff to attend your appointment with you if you prefer that option too.

We recently reviewed our patient experience feedback. A huge thanks to everyone who took the time to tell the Ministry of Health what you think of the Colville Community Health Clinic. We received some wonderful feedback. Our one area of concern is wait times - both to get an appointment time and again, once you are at the clinic. We are seeking input from patients via a suggestion box at reception – do you have any good ideas on what we could try to reduce the wait? Do let us know if you have – we welcome your feedback anytime.

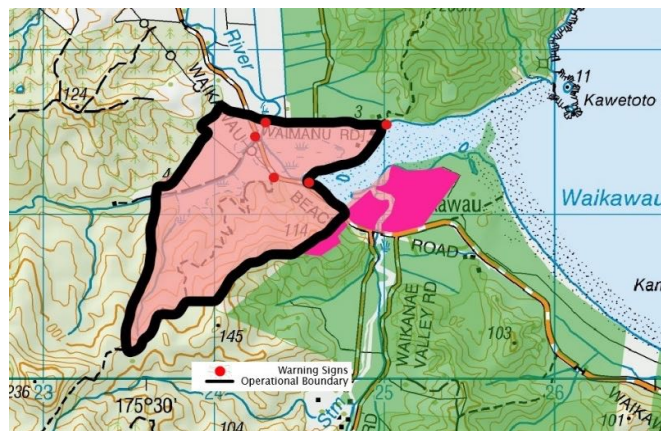
In finishing big thanks to Monica Garrett and Joel Nazareth, our recent 6th year Medical students. Both have made valuable contributions to clinic whilst with us.

Till next time keep the fire wood handy,
The team at Colville Community Health Centre

COROMANDEL PHARMACY Opening Hours: Mon - Fri 8.30 - 5pm ph (07) 866 8702 Sat 9.am - 1pm.

Waikawau Wetland Rodent Control

Our Waikawau Wetland Project area protects a variety of critically endangered and threatened bird species such as Australasian Bittern, Spotless Crake, Fernbirds and Banded Rails that call the wetland home. We have a network of over 200 rat traps through the wetland, they are currently serviced fortnightly but the rodent numbers are still climbing. To bring the rat numbers back into control an operation utilising Cholocalciferol will be conducted in June on private landowner blocks surrounding the wetland. This will support the ongoing trapping and result in low rat numbers in spring to give the native birds the best chance of successful breeding next year. The treatment area is shown below.



June MEG Winter Lecture

Our June lecture will be a little later in the Month than normal, 23rd June, so don't forget to mark it in your diaries. Our speaker will be conservation advocate, Dean Baigent-Mercer. Dean will be talking about the links between forest collapse and climate change, masting events, waves of bird extinction in these islands and what can be achieved to help nature thrive from the situation we have inherited.

See you at the Pepper Tree Restaurant, 7pm on Sunday 23rd June.

Kiwi Listening Survey

We conducted our Kiwi Listening training session at Port Charles with some of our volunteers from Coromandel town, Papa Aroha and Little Bay recently. We were excited to hear a couple of pairs and a couple of single males calling. It was a nice still evening with lots of Ruru (Morepork) calling too. Our annual kiwi listening survey is well underway and will run over the next couple of months. Our listening sites will be monitored by a mix of volunteers and acoustic recorders. When the data has been collected and analysed we will report our findings, so watch this space!

From the team at Moehau Environment Group

info@meg.org.nz

www.meg.org.nz

The AGM of the Colville PDC

will be held on Thursday 27 June at 7 pm

Agenda:- Minutes, Financial report, Chairpersons report, General business.

All welcome Meryl J.

QUEENS BIRTHDAY WEEKEND

Colville Market Day

Saturday 1st June 2019

9 am - 1 pm

Free Entry



Colville Hall - Colville
Arts & Crafts, Sellers of Curios
anything goes!

\$10 fee for Sellers * All Welcome!



Forest & Bird

TE REO O TE TAIAO | Giving Nature a Voice

CLIMATE CHANGE – WHY IS IT SO HARD?

Guest Speaker: Jeanette Fitzsimons

Our own champion of green politics, Jeanette is an influential speaker on climate change and sustainable development. Her keynote address will draw on national and global issues associated with climate change and the implications for us on the Coromandel Peninsula.

Come and be informed and inspired!

11.30 AGM - Chair's Report and election of office holders
12.00 - 1.00 Pot-luck lunch (please bring something to share)
1 pm Keynote address - Jeanette Fitzsimons

Forest and Bird Upper Coromandel Branch AGM
Sunday 2 June: St John's Ambulance rooms, Coromandel

Relax

& Revive Coromandel

www.relaxcoro.co.nz

Certified Massage Therapist

Relaxation Massage

Jan is working from the tranquil surrounds of the Tangiaro Kiwi Retreat, Port Charles

By appointment

Email: info@relaxcoro.co.nz

Ph 021 268 6198



D & K
HOME IMPROVEMENT
HANDYMAN

Ph. David Porter 07 866 7788 027 224 8925

email: davidkim@colville.org.nz





Mahamudra Centre for Universal Unity



ph 07 866 6851

www.mahamudra.org.nz

JUNE NEWS.

The centre will be CLOSED from Sat 8 - Fri 14 June.

Daily free guided meditations will otherwise occur in the gompas at 8.30 - 9 am .

*The centre will be closed for July. **Free community lunch Fri 28 June midday***



The Forager's kitchen

Hi all, the Forager's Kitchen will be closed after Queen's Birthday weekend.

BYO Licensed

Tel 07 8666 697 email: theforagekitchen@gmail.com



COLVILLE BAY PRE-SCHOOL

Come to our pre-school for fun and learning

We are open Tues-Fri 9 - 3 Ph 07 866 8319

Term 2 ends on Fri 5 July ~ Term 3 starts on Tues 23 July

Email: covillebay.elc@xtra.co.nz



TCDC is hosting an information sharing on the recent tsunami mapping done for the Firth of Thames.

It will take place on 20 June at the Colville Hall – 5-7pm.

Everybody welcome

Bryan: 021 799 056

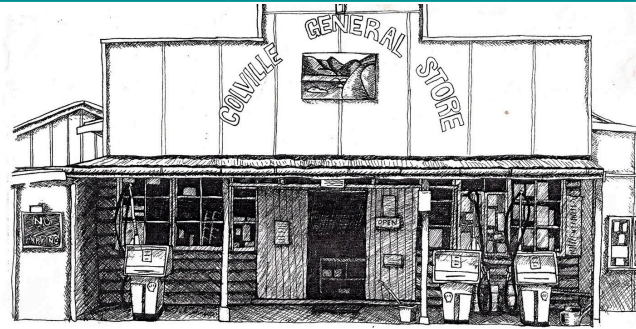
www.gardentools.nz



Joanna: 021 739 398

LIFETIME GUARANTEES

2314 Colville
Road RD 4,
Coromandel



Phone 07 866 6805

colvillegeneralstore
@gmail.com

Kia ora koutou,

Hope you are all enjoying the mild Ngahuru (Autumn). Things are still on the move here at the store as we strive to reduce packaging and plastic. Another of our aims is a return to more bulk and self service products. Any suggestions to how we can achieve this would be welcome.

However we are fully stocked up and keeping busy . Ka kite Ano.

Hours :- Monday - Sat 8.30 - 5pm Sunday - 8.30 - 4pm.

Colville Hall AGM TUESDAY 18 JUNE 7pm

Agenda:- Minutes, Financial report, Chairpersons report, General business.

ALL WELCOME Meryl J

Intro to TRE workshop at the Colville Hall on Monday 3 June

Release, relax and re-balance utilising the neuroplasticity of your brain.

TRE (Tension, stress and trauma Releasing Exercises) are an innovative series of exercises that assist the body in releasing deep muscular patterns of stress, tension and trauma. The exercises safely activate a natural reflex mechanism of shaking or vibrating that releases muscular tension, calming down the nervous system.

Benefits of TRE include:

- Reduced anxiety and depression.
- Decrease in chronic pain and muscular tension.
- Improved quality of sleep.
- Increased energy and vitality.
- Greater emotional resiliency.
- Less conflict in relationships.
- Supports sports or injury recovery process.



Amy Pennington (Cert.BioMed, M.Phil) is an internationally trained TRE facilitator who has taught workshops globally and is in residence in Port Charles. She is offering an affordable two-hour **Introductory workshop at the Colville Hall on Monday 3 June between 10am-12pm**. The workshop is priced on a sliding scale between \$5-\$40. To check whether TRE could help you, or for more information and bookings, text/call **0272633126**.



Romantic Winter Getaway for two

Secluded, tranquil and very romantic...

Package includes:
 2 nights accommodation for 2 adults
 Standard Chalet: \$390 or Deluxe Chalet: \$490
 \$100 restaurant voucher
 (excludes all drinks)
 Outdoor Spa Pools Free Wi-fi 11am check out

This offer cannot be used in conjunction with any other promotion or special offer at Tangiario
Offer subject to availability
Rates valid from 1 May 2019 to 31 August 2019

Indulge Yourself
 Add a Therapeutic Massage
 (Bookings essential)

DART'S NIGHT

Saturday 29 June
@ 5.15pm



Proudly sponsored by
**Stony Bay
Craft Beer**



1299 Port Charles Road, Coromandel

www.kiwiretreat.co.nz

(07) 866 6614

info@kiwiretreat.co.nz

FARM SHOP COLVILLE VILLAGE



OPEN IN JUNE

CLOSED MONDAYS

It's great to be back and see everyone again.

WINTER IS SLOWLY ROLLING IN

Time for hot creamy chowder, mince on toast, spicy nachos and of course our amazing 100% pure Hereford Beef Burgers. All our tasty regular favourites too.

Coffee...aaaahhhh

**100% HEREFORD BEEF BURGERS * HOT CHIPS * COFFEE * BAKING *
 PICKES 'N' JAMS * LOCAL ART * REAL FRUIT ICECREAM * MEAT**

2318 Colville Road, RD4 COROMANDEL 3584
herefordnapickle@gmail.com Cathy Ward 07 866 6937
www.kairauMATIpolleredherefords.com



ALCOHOLIC DRUG HELPLINE

FREE and CONFIDENTIAL 9am to 10pm everyday **0800 787 797**
Open friendly meeting. Anonymity assured. Please phone 021 314 467

Suicide Crisis Helpline: 0508 828 865 (0508 TAUTOKO) Lifeline: 0800 543 354
 Depression Helpline: 0800 111 757 free text 4202
 Outline: 0800 688 5463 Youthline: 0800 376 633


 **CORO MARKET**

NOW CLOSED UNTIL FRIDAY

OCTOBER 4 

Coromandels Flea market
Every Sat 8.30 -1

At Te Ahi Ka - (old Post Office)

Community Marketplace, Coro's flea market. Stalls \$5 bring your own table. Just turn up, we are there every Saturday. 

"Clay Time"

Anybody interested in clay work?

We meet at the *Colville Cafe* on the **second Tuesday** of every month.

Tues 11 JUNE at 11am

Cheers, Te Whanoa.

Northern Coro Rubbish
Collections for
JUNE

WED 5



Tues 11



Tues 18



Tues 25



Please leave blue rubbish bags on the ground, do not overfill green bins of glass, swap your broken/cracked bins at the Coro Council Office. Thank you.

525 Hauraki Rd, Coromandel. **07 866 7616**

Coro Refuse & Recycling Centre, & Goldmine shop.

Hours:

Mon, Wed, Fri, closed

Tues & Thurs: 11am - 4.30pm

Sat & Sun: 11am - 5.30pm

Public hols: 11am - 5.30pm

SEAGULL CENTRE

If you venture to, or can get through to Thames, this is another option for finding a bargain, just that little something you've been looking for.....

SAVE THE PLANET!



Community Law Waikato
 TE TARI TURE - A-HAPORI O WAIKATO
 Part of the National Community Law Movement



Free Legal Services*

(*Eligibility Criteria applies)

ph: 0800 529 482

visiting Thames fortnightly

12.30 - 2

WE DO NOT MAKE HARMONY.

WE DO NOT ACHIEVE IT OR GAIN IT

IT IS THERE ALL THE TIME.

Maezumi Roshy

Regular Events

Tuesdays - **Yoga** at the Colville Hall 10am

Thursdays - **Enliven** - at CSSC

Saturdays - **Coro flea market** 8.30 - 1pm

JUNE Events

Sat 1 - **Colville Market Day**, Colville Hall 9am-1pm

Sun 2 - **Forest & Bird AGM 11.30** inc. lunch and climate change talk at St John's, Coro

Mon 3 - **Intro to TRE Workshop**, Colville hall 10am-12pm

Fri 7 - **Colville School Board of Trustees** election closes at noon

Sat 8 - **World Ocean Day** quiz night at the Forager's Cafe 5.30 (Colville Harbour Care)

Tues 11 - **Clay time** at the Colville cafe 11am

Tues 18 - **CSSC Monthly Trustee meeting** 3pm

Tues 18 - **Colville Hall AGM** Colville Hall, 7pm

Thurs 20 - **TCDC Sharing** of tsunami mapping Colville Hall 5-7pm

Sat 15 - **Tree planting day** (Colville Harbour Care) 9am-1pm. Lunch provided

Sun 16 - **Cut off date** for **JULY** Panui

Sun 23 - **Family Sailing Day** Otautu 10am

Sun 23 - **MEG Winter Lecture** Pepper Tree Restaurant, 7pm

Thurs 27 - **Colville PDC AGM** 7pm

Fri 28 - **FREE LUNCH** @ Mahamudra Centre 12pm

Sat 29 - **Darts Night** Tangiaro 5.15pm

JULY Events

Fri 19 - Treaty of Waitangi Workshop. Colville Hall, 9am -4pm

Sat/Sun 20/21- Full day Medic Co responder Course

If you would like a listing on the Pānui events calendar, email the Pānui Editor:
panui@colville.org.nz