

PĀNUI

February 2021

Newsletter for the Northern Coromandel



2311 Colville Rd, Colville, 3584

PHONE: 07 866 6920 cssc@colville.org.nz

HOURS: 10am - 3pm TUES, WED, FRI

Closed MON, THURS

panui@colville.org.nz www.cssc.net.nz

Kia ora

Well here we are, February looming - sort of feels a tad more under control now weather always changing, let's hope the *planet saving* moves into a higher gear this year starting of course in our own backyards.



Disclaimer: The opinions expressed in this publication are not necessarily those of CSSC

Guidelines for contributions

Contributions are welcome but may not always be used. We may also edit them.

Email us your news, notices, advertisements, jokes, recipes, dreams & handy hints.

Please send in Word or Open Office (not PDFs). Or post, or drop contributions into CSSC.

Deadline for the March Issue

Tues 16 February

Subscriptions if you live outside delivery area

For an electronic copy (which comes in colour): email panui@colville.org.nz with 'subscription' in the subject line. For a mail copy: email/phone us. Subscription cost for printed copies is \$25 per annum. Contact us on 07 8666 920 or email us at panui@colville.org.nz

Contact Information

Phone 07 8666 920

Email: cssc.net.nz

2311 Colville Road, Colville.

Hours:

Tues, Weds, Fri 10am - 3pm

Mon & Thurs Closed

Closed for lunch 12.30 - 1pm

Manager - Larisa Webb

csscordinator@colville.org.nz

021 258 8037

Financial Administrator -

Nicole McCauley

csscfinance@colville.org.nz

Community Worker - Peter Selwyn

communityworker@colville.org.nz

021 057 2176

Phone/email/drop in to make an appointment (available Tues & Fri)

Community Development Worker -

Pamela Grealey

cdw@colville.org.nz

Colville Harbour Care Nursery -

Beth Pearsall

chccoordinator@colville.org.nz

021 237 8678

Youth Group - Elizabeth Mitchell &

Nathan McCauley

youthgroup@colville.org.nz

Pānui editor- Kate Shelley

panui@colville.org.nz

Youth Mentor programme -

Spike Mountjoy

colville.mentor@gmail.com

022 6047 975

*He who blames others,
has a long way to go on his
journey.*

*He who blames himself is half way
there.*

*He who blames no one has
arrived.*

Chinese proverb

Colville Social Service Collective (CSSC) would like to thank our funders and supporters :-

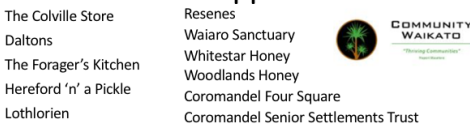
CSSC Main Funders



CSSC Funders



CSSC Supporters



CSSC would like to express our immense gratitude to our funders and supporters

VACANCY: Youth Community Development Worker



Colville Social Service Collective has a vacancy for a new role – a Youth Community Development Worker. This role will be focused on identifying and implementing initiatives for our rangatahi – youth.

This is a fixed-term (1-3 years funding dependent) part-time position. For more information and a copy of the Job Description please contact Larisa on cssccordinator@colville.org.nz or phone 021 258 8037. Applications close 5pm, 15 February 2021 (please note this is an extension to our previous deadline).

If you would like to support CSSC you can donate online with a bank deposit to:

CSSC 38 9009 0798558 00
(and put donation in the reference field) or contact Larisa
cssccordinator@colville.org.nz

VACANCY: Youth Group Coordinator



Colville Social Service Collective has another vacancy starting soon. Elizabeth Mitchell, who we have been fortunate to have in this role, will be resigning this year. Ideally we would like to appoint to start in March to allow for handover time. This is a part-time contract position which normally runs during three out of four school terms.

For more information and a copy of the Job description please contact Larisa, CSSC Manager, at cssccordinator@colville.org.nz or phone 021 258 8037. Applications close 5pm, 19 February 2021.

First Aid Training 2020:

CSSC, in association with St John New Zealand, held a first aid training course in Colville in November 2020. The course was well attended with a variety of individuals, organisations and businesses taking advantage of the Unit standards approved content. We will be holding training again in November this year for anyone interested.



2-5 April 2021

COLVILLE

EASTER

FESTIVAL

all welcome

www.colvilleartsfestival.co.nz



COLVILLE HARBOUR CARE
Te Umangawhā o Ngā Waka

 **Time to stop mining for good in the Coromandel!** 

C.L.A.I.M is holding its A.G.M on Saturday February 20 at 4pm at Colville Hall. The election of officers and Chair and Treasurer Reports will take place between 4pm and 5pm, followed at 5pm by Catherine Delahunty and Gus of Watchdog updating us on the current situation.

Prospects, the classic documentary made in the 1980s will be shown on the big screen and there will be nibbles and drinks. All very welcome. Exhibition of anti-mining art and T-shirts for sale.

Thanks, Beth Pearsall, Nursery Manager, 07 866 6920; 021 237 8678
chccoordinator@colville.org.nz www.colvilleharbourcare.org

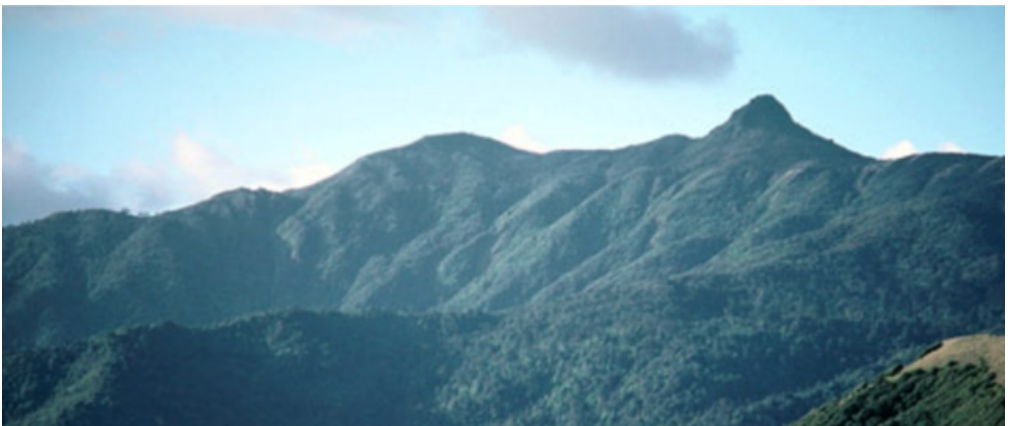
New conservation initiative

We are excited to share with you a new initiative starting in 2021 – Moehau ki te Moana! We have received five years of funding from the Ministry for the Environment’s Fresh Water Improvement Fund. The purpose of this fund is to create employment opportunities that will improve the health of Aotearoa New Zealand waterways. We were one of only two groups in the Waikato to receive funding.

This project will build on the wonderful work achieved with the Colville Harbour Care Project between 2017 -2020 to restore the Colville Harbour. Moehau ki te Moana covers a larger area from Port Jackson in the north west, to Waikawau in the north east, in addition to the Colville Bay area. More than 12ha of native wetland will be protected from grazing and stock exclusions will be created from more than 16km of river and streams. The benefits provided by fencing and riparian vegetation include stream bank stabilisation, filtration of run-off, removal of nutrients from shallow groundwater, shading to reduce weeds and water temperature, and the provision of habitat for vertebrates and invertebrates both in-stream and on land.

The project design and objectives encompass the promise of the Hauraki Gulf Marine Park Act 2000 to “halt or reverse progressive environmental decline by promoting a more integrated approach to its management.” The project was initiated by a community member. In just three weeks we were able to pull an application together – thanks to incredible involvement and support from farmers and mana whenua. Multiple farms in the area will be involved in this initiative.

We will share more information soon – once the project gets started. There will be a great coordinator role associated with this (which may be possible as a job share). We will advertise this in the next Pānui with an April 2021 start date.



COROMANDEL BUDGET ADVISORY SERVICE INC

Life can be busy enough and bills are something we can never avoid, so if you can find a balance and be in control of your financial situation that can be one less worry

At Coromandel Budget Advisory Service, we aim to help people who may be struggling to find a way to manage and maintain their finances.

If you would like help with working on a budget, getting debt under control or have other financial issues, we are here to help. Our service is free and totally confidential.

Why you might need us?

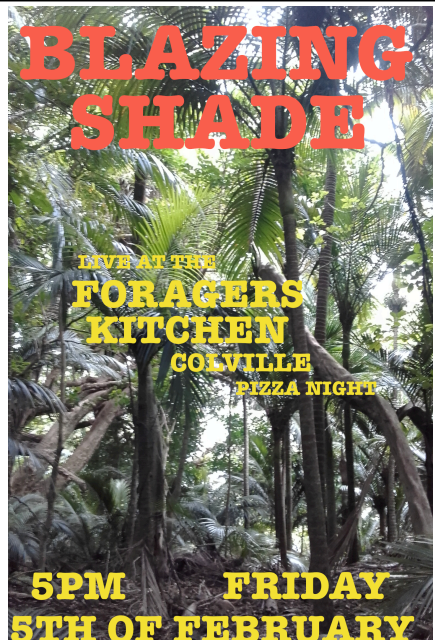
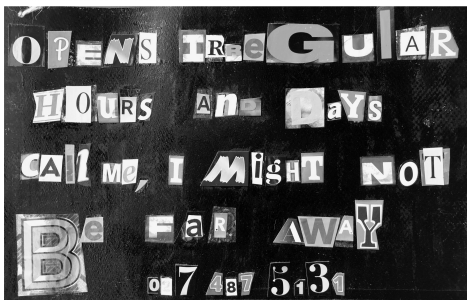
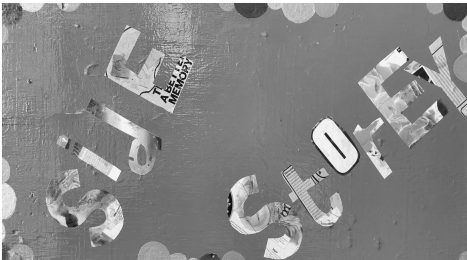
- You have debts that need to be paid, perhaps they are overdue?
- Need help with creditors?
- Would like to have more control of your financial situation?

What we can offer you

- Advocacy with creditors such as power and phone companies, finance companies and other lending organisations
- We work with you to create a realistic budget
- Foodbank access whilst dealing with debts.

A Coromandel Budget Advisory Service mentor is available at the Colville Social Services Collective, Wednesday mornings by appointment. To make an appointment please call us on 07 866 8351.

NZ made Art and Craft shop
in Colville beside the Cafe





**COLVILLE COMMUNITY HEALTH CENTRE
2299 Colville Rd, RD 4, Coromandel 3584**



Phone 07 866 6618. Fax 07 866 6619 Our txt number for the clinic is 4448

Mon, Tues, Thurs & Fri **9.00am – 4.00pm** / Wed **10.00am - 4pm**

GP Clinic at **Port Charles – Wednesday 10 February**

For the after hours service phone the clinic number 07 866-6618.

Please listen to the message carefully.

The On Call person will be paged by the after hours service.

When we are open you may get an answer phone message if all lines are busy or if we are closed for lunch. You cannot leave us a message.

Please remember - If it's an emergency, dial 111

Kia ora koutou

Aren't we are blessed to be living here in Aotearoa - enjoying the summer days and balmy nights!

We have some staff changes to update you about. We have employed another nurse, Talei Russek who is with us on a casual basis to help cover our shortfalls in staff especially over our busy holiday period. We have also appointed a Nurse Team Leader – Donna Barraclough who will commence with us in February to support our nursing team and the practice in general. Donna will replace our current practice manager Jo Herbert who is looking forward to retiring once a thorough handover has occurred.

We have Juliana Williams coming back for two weeks as our locum nurse late January and early February, and some of you will have noticed that Diane Morreel has been back with us on occasions to help cover our roster. A great big thanks to both Juliana and Diane for continuing to support us with their skills and experience – their contribution is awesome. Dr Geoff Norcliffe will continue to work with us on a regular basis too. We also have fifth and sixth year students coming on and off over 2021 and first up we welcome Joshua Brearton who will be with us for 5 weeks from 25th January.

When people are registered with us our clinical staff often request them to have some screening tests. These tests can include blood tests, Blood Pressure (BP) checks, liver and kidney function tests, mammograms, prostate checks and cervical smears to name a few. Screenings like these are done to help us monitor and treat changes and in the longer term, reduce the likelihood and impact of chronic illnesses, which can severely impact on people's health and wellbeing into the future. We are often disappointed at people's lack of response to our texts/messages inviting them to participate in a particular screening process. We ask that you seriously consider your own ongoing health by participating in the screening programmes that are appropriate for you. Your participation can also help the clinic achieve targets that often bring further funds to the clinic, which helps ensure our viability and ability to continue to provide services within the community.

Remember we have several health practitioners offering services at the clinic in 2021, including new to us, local Acupuncturist Christina Wu. (See her column in this edition).

Till next time take care,

The team at Colville Community Health Centre.



Mahamudra Centre
for Universal Unity



February events

5-8 February

Stillness, Movement, and Awareness - A weekend retreat with Hedwig Bakker

9 February

Online Course with Venerable Khadro starts

12 February

Guru Puja with Tsog @ 10am Video Teaching of Lama Osel 2pm

13 February

Curry Night at the Forager's Kitchen – just drop in! from 7pm

26-28 February

What is the Mind? A weekend retreat

8:30am-9am Free Meditation Daily (except during retreats)

Everyone warmly welcome!

**2183 Colville Road 07 866 6851 retreat@mahamudra.org.nz
www.mahamudra.org.nz**



Coromandel
Community Acupuncture



Coromandel Opening on 3rd February 2021

Every Wednesday & Thursday 9am to 3pm

Tiki House (CILT), 45 Tiki Road, Coromandel

Tai chi classes Wednesday 4-5 pm at Coromandel Citizen's Hall

Colville Opening on 15th February Every Monday 9am to 4:30pm

Colville Community Health Centre

Tai chi classes from 5pm at Colville Hall

Christina Wu, ACC registered acupuncturist, Bachelor of Health Science (Acupuncture & Chinese Medicine), Tai chi teacher, brings her caring and holistic approach to serve the Coromandel community. Phone: 021 113 4768 Email: christinawu121@gmail.com

Please visit www.corocommunityacupuncture.co.nz for opening specials



COLVILLE STORE NEWS



Ph 07 866 6805

colvillegeneralstore@gmail.com

NEW HOURS FROM THE 9TH FEBRUARY

MON, TUE, WED, THURS, SAT & SUN : 8:30am – 5pm

FRI : 8:30am – 6pm

It has been a lovely Colville Summer and we would like to thank all our customers for their ongoing support.

The store is still fully stocked with lots of goodies.

We would like to thank our Summer staff, Alea, Mary Jo, Kloee & Spike for their awesome hard work over the busy period.

Casual staff comments from superb Alea:

From quiet to busy periods at the Colville Store the consistency of kindness, laughter and hard work from the team has been astonishing. I write this piece on my last shift for Summer and WOW. What an amazing culture the Store has created for its community.

This Summer was full of travelling Kiwis who popped into the store to see the array of local talent; from balms to groceries, to bits & bobs you didn't even know you needed. Countless times I have been told how wonderful it is to have such a variety of stock & that people love to come in just to look around.

So, thank you to everyone who supports the Colville Store and to the team for making a 'working Summer' one of my best ones yet 😊

Community Policing Colville Community Meeting

Tuesday 23 February 1 - 3pm,

Colville Hall,

2310 Colville Road



Themes for the meeting:-

- Meet the NZ Police staff of the Northern Coromandel area
- Information on how to get help
- General question and answer session from the floor.

Because the Police are on call, if an emergency arises they may have to cancel on the day. So we can let you know if the event is postponed, please register with CSSC: email cssc@colville.org.nz, or call (07) 8666920 or text 021 057 2176. We will also confirm whether the event is going ahead on our facebook page and website.



MEG Summer Holiday Programme

Our Summer Holiday Programme ran for the first three weeks of January and once again we had the opportunity to engage with people from all walks of life and share our passion for the environment.

We kicked off with a stall at Keltic Fair day, selling traps and giving out lots of helpful advice to interested landowners. Koru the Kiwi was a hit at the Fair again with oodles of people getting their pic snapped with him. We had our taxidermy predators and a few native birds along as well, including the Australasian Bittern or Matuku. Most people will probably never see a Bittern in the wild so it was the perfect way to introduce people to the Bittern and their plight. Did you know there are less than 1000 of them left in New Zealand, but we are lucky enough to have a few resident birds around Colville, Waikawau and Kennedy Bay.

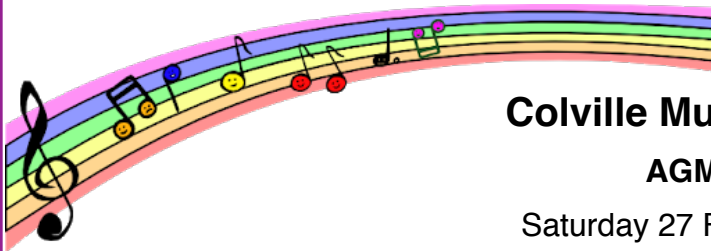
Weed of the Month – Woolly Nightshade

This months Weed of the Month is Woolly Nightshade. Also known as Tobacco weed or Kerosene plant, Woolly Nightshade is a capsicum smelling, small tree with velvety oval grey/green leaves that are whitish underneath. With dense clusters of purple flowers followed by clusters of small round berries that ripen from a hard green to a soft, dull yellow. It grows and matures rapidly forming dense and often pure stands, preventing establishment of native plant seedlings. It is also allelopathic, which means it produces toxins that poison the soil and is happy to invade almost all kinds of areas and soil types, including coastal and estuarine margins.

Check out of window display at Liquor King Coromandel or www.weedbusters.org.nz for more information on how to eradicate this plant from your property.

Have a great month everyone!

Contact us at info@meg.org.nz or make a donation by visiting our website www.meg.org.nz



Colville Music Club

AGM

Saturday 27 February 1pm

David Wright Wright Contracting Services

General and Heavy Engineering including:

- Welding
- Machining / Fabrication
- Hydraulics
- Machinery Repair / Maintenance

No job too big or small!

Onsite or at my Colville workshop

Phone: (021) 100 2767

Email: dewwrightnz@gmail.com



What can I do to conserve water?

There are a number of simple ways in which we can reduce water around the house while enjoying what the Coromandel has to offer indoors.

- Fill the sink to wash vegetables and rinse dishes.
- Turn the tap off while you are brushing your teeth.
- Only use your dishwasher and washing machine when you have a full load.
- Promote shorter showers and shallower baths
- Use a bowl to scrub vegetables in the kitchen sink. You can pour the water on your our plants.
- Keep water in a covered jug in the fridge. It saves running the tap to get cold water.



Looking for a Midwife?

I'm an experienced midwife who loves living in the beautiful northern Coromandel. I provide community primary midwifery care and cover the upper and western side of the peninsula from Port Jackson to Manaia , including Colville & Coromandel Town.

Sheryl Wright

Moehau Midwives

Phone (022) 500 1310

www.birth.net.nz

moehau.midwives@gmail.com



Northern Coro Rubbish
Collections for
FEBRUARY

Tues 2



Tues 9



Tues 16



Tues 23

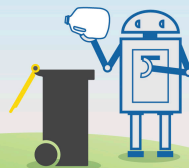


KERBSIDE PLASTIC RECYCLING CHANGE

LOOK FOR THE NUMBER



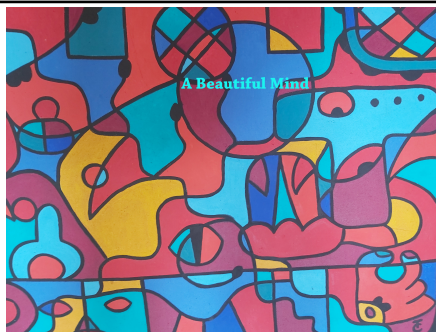
Only plastics 1 & 2
will be collected
for recycling



RECYCLING REMINDER

TCDC no longer collect plastic types 3 - 7.

*ONLY plastic types 1&2, tins,
paper & cardboard go in the green
wheelie bins. Bear this in mind when you
are shopping.*



Mr Mojo Band

Classic Rock & Blues
Saturday, 6th February
at the
Colville Hall
8 pm till late
ticket sales at Door
\$15 entry

CORO MARKET



Now **OPEN EVERY FRIDAY**
on the grass by the BNZ
8.30am - 12.30pm
Any enquiries 07 866 8932

**Coro Refuse & Recycling
Centre.**

Tuesdays & Thursdays
9 - 3.30
Saturdays & Sundays
9 - 4.30

Goldmine shop open

Thursday mornings and Sundays
525 Hauraki Rd, Coromandel.

07 866 7616

Handling rubbish, including recyclable
items, illegally dumped at the gates of our
Refuse Transfer Stations (RTS) outside of
hours, incurs a cost for all our district
ratepayers that contributes to driving up
the annual rates bill.



FARM SHOP
COLVILLE VILLAGE



Welcome To 2021!!

*Come in and enjoy great food, delicious
homemade baking and award winning coffee.*

*Great people, great atmosphere
and a great place to eat and relax.*



**100% HEREFORD BEEF BURGERS * HOT CHIPS * COFFEE * BAKING *
PICKES 'N' JAMS * LOCAL ART * REAL FRUIT ICECREAM * MEAT**

**100% HEREFORD BEEF BURGERS * HOT CHIPS * COFFEE * BAKING *
PICKES 'N' JAMS * LOCAL ART * REAL FRUIT ICECREAM * MEAT**



*** Yes we are open for business ***

Winter opening hours are as follows

CAFÉ—Wednesday to Sunday 10am—5pm

RESTAURANT—Wednesday to Sunday with bookings only

Darts games Saturday 13 March 6pm

CLOSED = MONDAY & TUESDAY ph 07 866 6697

Relax & Revive Coromandel

www.relaxcoro.co.nz

**Certified Massage Therapist
Relaxation Massage**

**Jan is working from the tranquil surrounds
of the Tangiario Kiwi Retreat, Port Charles**

**By appointment
Email: info@relaxcoro.co.nz
Ph 021 268 6198**





Colville Bay Pre-School

Haere Mai!

Bring your children to Pre-School for fun & learning!

Tuesday to Friday 9am to 3pm during School terms.

20 Free ECE hours for 3 years and over. WINZ subsidies available.

Term 1 begins on Tuesday, February 9th

On Wednesday mornings we have a Parents & Toddlers group while our 4 & 5 year olds are at Bush Kura.

We welcome new enrolments. Come and meet us!

Phone - 07 866 8319 or 021 1133 482

Email - cbpreschool@xtra.co.nz

HIMALAYA SHOP

Hi there,

Hope you all had a good holiday !

We'll be open every day from 10 - 4

cheers Rob & Nette

ph 07 866 7224 shop 07 866 6865 home

021 139 7838 Anette

The Forager's kitchen

2314 Colville Road, Colville

Closed Mondays

theforagerkitchen@gmail.com

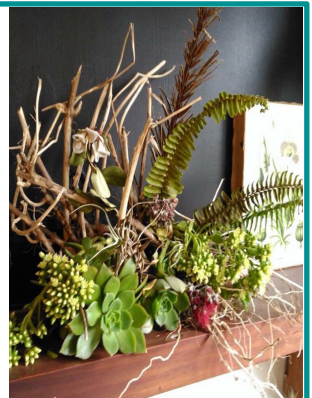
LIVE MUSIC

Most Friday nights -
checkout the line up and
details on the Forager's
Kitchen facebook page



027 3666 986

021 186 3631





**COLVILLE LAWNS
PROPERTY
MAINTENANCE**

Seamus

021 0264 1000



**D & K
HOME IMPROVEMENT
HANDYMAN**

Ph. David Porter 027 224 8925

email: davidkim@colville.org.nz



Bryan: 021 799 056

www.gardentools.nz



Joanna: 021 739 398

LIFETIME GUARANTEES



White Star Honey

Producing Local Delectable Honey

Available from Colville General Store, Coromandel Meat Keeper or direct at White Star Station / Colville Farm Holidays. Contact Tellic 021 770 382 or email wshoneynz@gmail.com

**Self Service Coin Operated
Washing Machine and Dryer
OPEN 7 days**

Available at White Star Station / Colville Farm Holidays 2140 Colville Road, Colville Coromandel (2 minute's drive, 1.7km South of the Colville General Store towards Coromandel Town)

Follow the signs at the front Gate.

\$4 per wash \$4 for 45mintues approx drying time.

Takes \$1 and \$2 coins.



WHATS ON IN THE NORTHERN COROMANDEL

Regular events

Enliven -	Every Thursday 10am
Yoga -	Every Tuesday Colville Hall 10am
Sunset Yoga	Every Thursday in term times with Vanessa @ Colville School Hall. 5 - 6.15pm
Daily Meditation	Free @Mahamudra Centre 8:30am - 9am (guided)
Friday nights	Forager's Kitchen. Live music early evenings 5.30 on
Mondays	Tai Chi classes @ Colville Hall 5pm

February dates

Fri 5	Blazing Shade band @ Forager's Kitchen 5pm
w/e 5-6	Stillness, Movement, and Awareness - Retreat with Hedwig Bakker
Sat 6	Mr Mojo band @ Colville Hall 7.30pm \$15
Tues 9	Colville Pre School opens 9am
Tues 9	Online Course with Venerable Khadro starts
Fri 12	Guru Puja with Tsog 10am - Video Teaching of Lama Osel 2pm
Sat 13	Curry Night at the Forager's Kitchen – from 7pm – just drop in!
Mon 15	Community Acupuncture available @ Colville health centre
Mon 15	Applications close for Youth Community Development Worker job @ 5pm
Mon 15	Tai Chi classes begin @ Colville Hall 5pm
Tues 16	Deadline for March Panui
Fri 19	Applications close for Youth Group Coordinator job - @ 5pm
Sat 20	CLAIM AGM @ Colville Hall 4pm
Tues 23	Colville Community Meeting @ Colville Hall meet the Police 1-3pm
w/e 26-27	What is the Mind? A weekend retreat @Mahamudra Centre
Sat 27	Colville Music Club AGM @ 1pm

March dates

Sat 13	Darts games @ Tangiaro 6pm
--------	----------------------------

Important numbers

111	Fire, ambulance, police emergencies needing immediate assistance
105	Police - for reporting incidents not requiring an immediate response
0800 CRIMESTOPPER	For reporting crime (anonymous)
0800 611 116	For medical advice or information 24/7
0800 787 797	Alcohol Drug Line 24/7
0508 828 865	Suicide Crisis Helpline
0800 543 354	Lifeline
0800 111 757	Depression Helpline: free text 4202
0800 688 5463	Outline
0800 376 633	Youthline
0800 764 766	National Poison Centre
07 8666 920	Colville Social Service Collective
07 8666 618	Colville Community Health Centre
07 8666 615	Colville School
07 8666 805	Colville General Store
07 8668 319	Colville Bay pre school
07 866 8702	Coromandel Pharmacy M-F 8.30am-5pm; Sat 9am-1pm