

PĀNUI

JULY 2020

Newsletter for the Northern Coromandel



2311 Colville Rd, Colville, 3584

PHONE: 07 866 6920 cssc@colville.org.nz

HOURS: 10am - 3pm TUES, WED, FRI

Closed MON, THURS

panui@colville.org.nz www.cssc.net.nz

Kia ora tatou,

Well at least we have had enough rain to make the grass grow again. The sad sight of our hills looking like a dry desert has thankfully disappeared.

Had hoped to delete the background of bubbles on the front page, but alarmingly we are still hoping the border patrol can keep a vigilant check on any incoming humans. Not an easy task despite all the hi tech equipment we appear to have. So we will keep washing our hands often and not get too close. Kia kaha.



It is MATARIKI time again. Enjoy the stars.

Disclaimer: The opinions expressed in this publication are not necessarily those of CSSC

Guidelines for contributions

Contributions are welcome but may not always be used. We may also edit them.

Email us your news, notices, advertisements, jokes, recipes, dreams & handy hints.

Please send in Word or Open Office (not PDFs). Or post, or drop contributions into CSSC.

**Deadline for the AUGUST issue:
Tues 21 JULY**

**Subscriptions if you live
outside delivery area**

Contact Information

Phone 07 8666 920

Email: cssc.net.nz

2311 Colville Road, Colville.

Hours:

Tues, Weds, Fri 10am -3pm

Mon & Thurs Closed

Closed for lunch 12.30-1pm

Coordinator - Larisa Webb

csscordinator@colville.org.nz

021 258 8037

Financial Administrator

Nicole McCauley

csscfinance@colville.org.nz

Community Worker - Peter Selwyn

communityworker@colville.org.nz

021 057 2176

Phone/email/drop in to make an appointment (available Tues & Fri)

Community Development Worker -

Pamela Grealey

cdw@colville.org.nz

Colville Harbour Care Nursery

Beth Pearsall

chccoordinator@colville.org.nz

021 237 8678

Youth Group - Elizabeth Mitchell &

Nathan McCauley

youthgroup@colville.org.nz

Pānui editor- Kate Shelley

panui@colville.org.nz

For an electronic copy (which comes in colour): email panui@colville.org.nz with 'subscription' in the subject line.

For a mail copy: email/phone us.

Subscription cost for printed copies is \$25 per annum. Contact us on

07 8666 920 or email us at panui@colville.org.nz

Colville Social Service Collective (CSSC) would like to thank our funders and supporters :-



CSSC Main Funders



If you would like to support CSSC you can donate online with a bank deposit to:

CSSC 38 9009 0798558 00
(and put donation in the reference field)
or contact Larisa
cssccordinator@colville.org.nz

CSSC Funders



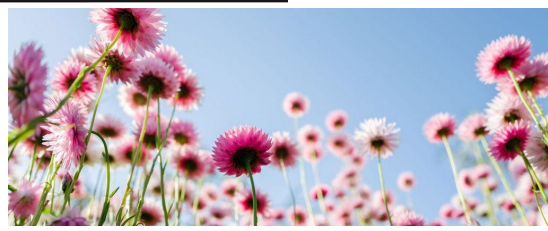
Mentoring

Got time and skills to share, and a listening ear? We are looking for expressions of interest from potential mentors to join Colville's new youth mentoring programme. Contact Spike Mountjoy colville.mentor@gmail.com or phone 8666 920

CSSC Supporters

- The Colville Store
- Daltons
- The Forager's Kitchen
- Hereford 'n' a Pickle
- Lothrien
- Resenes
- Waiaro Sanctuary
- Whitestar Honey
- Woodlands Honey
- Coromandel Four Square
- Coromandel Senior Settlements Trust

CSSC would like to express our immense gratitude to our funders and supporters



Youth Mentor Programme

Would you like to learn to surf? Weave a kete? Restore an old motorbike? Take up an instrument? Create your own online game? Get some work experience? Or hang out with someone creative and kind? If you are aged between 12 and 24 Colville's new youth mentor programme is for you - contact Spike at colville.mentor@gmail.com to find out more.

DOG REGISTRATIONS DUE 31ST JULY

If you have a dog, it's time to renew its registration for 2020/21. This costs \$80 for all dogs except guide dogs and dangerous dogs. To renew your dog's registration online, go to the online payments portal on our website tcdc.govt.nz/renewdog and click on the 'Renew my dog registration now

To renew online, you will need to have your dog reference number as shown on your renewal letter. If any details on this letter are incorrect, please update the details using the **Dog Maintenance Form** before making a payment.

Or, you can pay at one of our offices: bring your completed and signed renewal form with you for over-the-counter payments. You can also post a cheque with your completed and signed renewal form to:

TCDC Dog Registration Private Bag 101, Thames.

Or call us on 07 868 0200 or email customer.services@tcdc.govt.nz.

COLVILLE SAILING ACADEMY A.G.M.

Friday 17 JULY 10am at

Karuna Falls community building.

Followed by a pot luck lunch. ALL WELCOME.



COLVILLE HARBOUR CARE
Te Umangawhā o Ngā Waka



Colville Harbour care Nursery Open for business.

Native trees for sale by appointment. Discounts available for bulk orders. Contact Beth on 021 237 8678 or chccoordinator@colville.org.nz

Tree planting bees and potting parties coming soon !!

Follow us on Facebook for details [@colvilleharbourcare](https://www.facebook.com/colvilleharbourcare)



The Colville Project

www.thecolvilleproject.nz

The Colville Project Update

Congratulations to Sheryl Wright who won the photo competition on our FaceBook page with this amazing shot taken in the Waiaro Estuary. Sheryl donated the vase she won back to the project as a future raffle prize. Thank you Sheryl. And a big thank to all who entered the competition and continue to support us.



PORT CHARLES Voluntary Fire Brigade **AGM**

Sunday June 28 11 am All welcome

COLVILLE STILL SINGING COUNTRY & MORE

Howdy Y'all from Colville Easter Festival Coordinators

We are excited to announce that a mini festival is happening in Colville.

Since we couldn't go ahead with the full festival programme over Easter, we'd like to bring the party back, just a little smaller (but not less exciting).

With Colville Sings Country at 7.30pm on Friday Night the 4th of September 2020 we'll open the Spring Season - New Beginnings - Country style dress up - prize for best Country Costume. About 20 local musicians will sing one song each in a country theme.

This night is for Adults only (age 16+).

Entry \$25. Tickets essential from Colville General Store and Richardsons Real Estate Coromandel - on sale from 10th July.

Come early for dins - Both Hereford 'n' a Pickle and The Forager's Kitchen will be open - The Forager's for wood fired pizzas.

followed by a Country Party on Saturday Night 5th September 2020 for ALL. Starting at 5pm with a Kids Disco.

Then... at 6pm DJ Doc Westie (Jamie Larnach, Splore 2020) will kick the evening off.

"The country tunes I'm playin, I've cadged the biggest barn stompers and given 'em another showing with big fat bass and farty noises. When people hear my music they laugh and dance at the same time. It's a classic combo"... Jamie Larnach developed 'Doc Westie' from a whimsical character into a fully-fledged stage presence.

And from London, (for past 18 yrs) Isaac Levi Tucker, Drummer, Percussionist, DJ, Composer/producer. Will play you a DJ set of tunes that will make you jump and kick like a Pony. Yeehaa...!!

We also have a Pie Baking Competition on this night - savoury and/or sweet - so bring up your best effort (entries limited to 2 pies per person:).

Prizes from local businesses will be given for best pie and best costume - so come dressed up Country Style.

Entry \$20 / under 16 KOHA. Door Sales only.

Pies will be available to purchase, so bring cash.

Once again, we are going to make it a low alcohol event please. No boxes or bottles of spirits will be allowed in the hall. Come and enjoy with us.

This is a Project of the Colville Social Service Collective

(CSSC) cssc@colville.org.nz www.colvilleartsfestival.co.nz/

078666920 / Steve 021711489 / Ella 0274875131

COLVILLE COMMUNITY HEALTH CENTRE

2299 Colville Rd, RD 4, Coromandel 3584

Phone 07 8666618. Fax 07 8666619 Our txt number for the clinic i

Mon, Tues, Thurs & Fri 9.00am – 4.00pm / Wed 10.00am - 4pm

- GP Clinic at Port Charles – Cancelled till further notice

For afterhours service phone the clinic number 07 866-6618.

Please listen to the message carefully.

The On Call person will be paged by the afterhours service.

The answerphone service operates during the hours we are open

if all lines are busy or if we are closed for lunch

Remember - If it's an emergency, dial 111



Isn't it great to have the freedom of level one again - today however we are reminded of the fragility of this newly won freedom, with the news of two new cases of Covid. A reminder for us all to keep up the hand washing and other hygienic practices we have become so adept at.

Juliana Williams is an experienced nurse who has been our locum nurse for some time and we were so lucky to have had her services for a good bit of the lockdown period. A big thanks to Juliana for so willingly helping us out and especially for doing much of the afterhours call, giving our team a break. Our other nurses, Tina and Niki are now rostered on regularly and will be around for the long term to support our patients out there. Andrea our receptionist has made the decision to finish work over the lockdown period. We will miss her, and wish her all the best for her retirement. Dr Kate is continuing to triage calls to the clinic in the mornings and make a plan with the caller about what to do next. As requested last time, please call in the morning so you can talk with her. Sometimes you may not need to be seen in person and other times Kate will suggest you come to the clinic to see someone - that could be Dr Kate, a nurse or a 5th year medical student. The students are able to gain some very valuable experience during their time with us and we all really appreciate you coming to see them if you need to be seen at the clinic. In saying that a wee reminder too that it is your right to say no if an appointment with a student is offered to you.

We are continuing to ask people to wait in their cars and beep their horns when they arrive, as we have modified the clinic layout and no longer have a waiting room. This will remain in place for the foreseeable future, and as happened before we suggest people bring before coming to check on timing at the clinic. Another idea is bring something to do with you.

By the time you read this, we will have passed the shortest day.

Roll on Spring. Till next time keep warm, the team at Colville Health Centre



Mahamudra Centre has hosted two successful retreats since we reopened in May. We would like to express our deep gratitude to the visiting teachers, the participants, and our staff & volunteers. We are very privileged to share the teachings during this turbulent time.

Below is the information of our upcoming pujas and retreats. You can find more details on our website.

3-5 July Finding Meaning, Inner Happiness & Inner Peace Retreat

11 July Purification Practice Day

17-19 July Brightening your Inner Clarity Retreat

25 July Merit Practice Day

31 July – 2 August Introduction to Buddhism Course

8 August Purification Practice Day

14-16 August Peaceful Living - Peaceful Retreat

22 August Merit Practice Day

28-30 August All about Karma Retreat



For Colville Darlings: Written by Jules Noname

Lorraine and Rob Courtney, the gems you will find
So called 'retirement', for the clever and the kind.
Colville General Store, a co-operative icon,
welcomed their input through many a tough time.
Lorraine came on board to sort out financials
and Rob volunteered with major essentials.
They updated the systems and sorted the slack,
from ice making ventures and new freezer space,
bulk bin areas and technical know how filling the place.
Most of all Lorraine is so dear,
her motherly nature providing amazing care.
Efficient and trust worthy is mild to say,
for such an amazing couple who now need to play.
Farewell to them both and we thank them so much,
for everything, our hearts they have touched.



COLVILLE STORE NEWS



opening hours: Mon-Sat 8.30am-5pm

Ph 07 866 6805

Sundays - 8.30am- 3.30pm colvillegeneralstore@gmail.com

It's been a time of significant change at the store and with Covid19 taking front of stage, we have not had time to acknowledge it. We said goodbye to Su Smith and Wayne Todd some months ago and we even managed to have a leaving party. Su had a big input to the organic section at the store and Wayne was not only a director of the COM but also worked along side Rob with many maintenance projects.

More recently, we said goodbye to Lorraine and Rob Courtney who had been behind so much change and productivity at the store for many years and clocked up an enormous amount of volunteer hours between them. We haven't had the time to acknowledge their huge list of achievements and they hardly left on a high note as Covid19 struck as soon as the hand over, then Travis Tupaea started.

Teresa took some time out over the stage 4 lockdown and rather enjoyed it a bit too much so she decided not to come back. Teresa had run our fishing section and supplied the store with her home grown veges. Jules, after running around for customers and serving through the hatch felt it was time to put her feet up and get off the concrete floor. Jules was always first to do a job; cleaning windows, fridges and freezers and hands-on with any job that needed doing. So we say good bye to the team that was, (and it was a good one) and we reform and welcome our new team members. Suzi Rodgers has been with us as a casual for some time but has recently joined us on a permanent basis. Travis Tupaea has taken over from Lorraine (and hopefully Rob as well) in the office, Sue Whitebread who has been casual with us for some time and really stepped up during Lockdown is now with us and Brooke Tupaea who also stepped in during level 4 has also joined us.

Farewell to those already gone. The rest of the team miss you already. Thank you for all you have done. Welcome to our new team members, thank you for joining us and we look forward to working with you.



Rat Attack Fact File!

Here's a profile on one of our project areas – Port Charles Rat Attack.

What: Network of 2000 victor rat traps set on 60km of track over 250ha. Over the next 2 years protection will increase to 3250 traps on 81km of track over 450ha (MEG-a-Rat Attack).

Why: To compliment predator control in the area, developing an intensively trapped low predator zone, in recognition of important resident native species and forest regeneration.

When: Project started in 2004

Funded by: Currently - Waikato Regional Council. Rat Attack extension – NZ Lotteries

Outcomes: Small Mammal Indexing consistently below 5% our native flora and fauna to Flourish.

If you'd like to know more about our other projects, head to our website...

A Month in with MEG

A word from our newest team member Emily...

Kia ora community, it's definitely been challenging at times, but working for MEG has been really rewarding. It's such a beautiful piece of Aotearoa, the Coromandel Peninsula, and I feel very lucky to be able to discover this place from the inside of the native forest blocks. It's been wonderful getting to know the people I work with and learning about the land from their past experiences. Working

towards conservation management and seeing how much human power it takes to execute these projects has been a big lesson. I dream of what these patches of native bush used to look like, and I try to imagine the bird chorus that would radiate from an untouched or fully regenerated forest.

I can tell that a lot of people really respect the bush and choose to live up here because of the proximity to the ocean and forest!

The mahi is very physically demanding, but it's easy when you realise you get to spend all of your work-day outside. I know there is a lot more exploring to do outside of work hours, and so I look forward to daylight savings. But for now, I'll enjoy the wet, damp winter and accept this time as slow and as a brief hibernation.

Tena koe to everyone who has made me feel so welcome thus far.

Native Seedlings Thanks to our generous volunteer Pete, we have more Titoki and also some Karaka seedlings for sale. The seedlings are \$3 each, if you'd like to order some seedlings email us at info@meg.org.nz from the team at Moehau Environment Group www.meg.org.nz



Colville Bay Pre-School

Haere Mail

Bring your children to Pre-School for fun & learning!

Tuesday to Friday 9am to 3pm during School terms.

20 Free ECE hours for 3 years and over. WINZ subsidies available.

Term 2 ends Friday 3rd July. Term 3 begins 21st July

On Wednesday mornings we have a Parents & Toddlers group while our 4 & 5 year olds are at Bush Kura.

We welcome new enrolments. Come and meet us!

Phone - 07 866 8319 or 021 156 5185

Email - colvillebay.elc@xtra.co.nz

Coromandel 200 Illume Festival 25 - 26 September

Friday 25 September:

- DJ performing
- Disney Kids Zone
- Powerco night markets

Saturday 26 September

- Themed ball
- Live music
- Coro 200 unveiling
- Commemorative planting
- Street parade
- Powerco night markets
- Richardsons Real Estate fire works display

Bookings for the night market stalls can be sent to:

illumecoromandel@gmail.com

Stalls are free for local community groups to fundraise. \$30 a night for private individuals to sell things.

Please provide your own power and lights and tables.

Set-up by 6:30pm, road closed at 7pm-9pm (due to it being later in the year)



"Please don't 'wish cycle' and place plastic types 3-7 into your recycling bin because you wish they could be recycled, or in the hope it might get recycled. It won't be," Mr Hinson says.

Northern Coro Rubbish Collections for JULY

Tues 7



Tues 14



Tues 21



Tues 28



If you see someone
without a smile, give
them yours.

Dolly Parton

Shed space to rent

I'm looking for some space in a shed to rent to store a boat (2.5m x 7m) until January.

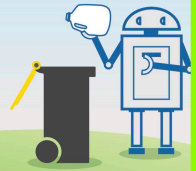
Ideally somewhere I could access to work on it from time to time. cheers - spike spike.mo@gmail.com

KERBSIDE PLASTIC RECYCLING CHANGE

LOOK FOR THE NUMBER



Only plastics 1 & 2 will be collected for recycling



RECYCLING REMINDER

TCDC no longer collects plastic types 3 - 7.

ONLY plastic types 1&2, tins, paper & cardboard go in the green wheelie bins. Bear this in mind when you are shopping.

Coro Refuse & Recycling Centre.



Goldmine shop open

Please Facebook us for guidelines for recycling.

Tuesdays & Thursdays

11 - 4.30

Saturdays & Sundays

11 - 5.30

525 Hauraki Rd, Coromandel.

07 866 7616

**FARM SHOP
COLVILLE
VILLAGE**



WOW..... July already

We will be closed on Mondays this month, but we will keep our kitchen open later on Friday night, so you can pop in for your favourite burger for Tea. Every other day open from 9.30am till 3pm ish.

Lots of great options to warm you up on these colder days. A heater too to keep you warmer in our little room.

And delicious Sacred Grounds coffee...mmm

**100% HEREFORD BEEF BURGERS * HOT CHIPS * COFFEE *
BAKING * PICKES 'N' JAMS * LOCAL ART * REAL FRUIT
ICECREAM * MEAT**

2318 Colville Road, RD4 COROMANDEL 3584
herefordnapickle@gmail.com Cathy Ward 07 866 6937
www.kairaumati polled herefords.com



*** Yes we are open for business ***

Winter opening hours are as follows

CAFÉ—Wednesday to Sunday 10am—5pm

RESTAURANT—Wednesday to Sunday with bookings only

Next darts game **SATURDAY 8th AUGUST**

CLOSED = MONDAY & TUESDAY

Relax & Revive Coromandel

www.relaxcoro.co.nz

Certified Massage Therapist

Relaxation Massage

Jan is not available over Winter this year. Back on deck in Spring.

By appointment

Email: info@relaxcoro.co.nz

Ph 021 268 6198



***TOWARDS AN AGE FRIENDLY COROMANDEL
-COMMUNITY ASSESSMENT/SURVEY***

CILT is currently undertaking a survey to evaluate how communities are addressing needs and preparing for the future in order to improve the lives of older people in the Coromandel/Colville ward.

People over the age of 55 are being invited to participate. CILT has decided to include the 55-64 demographic as a way of estimating future needs.

Surveying is underway and needs to be completed by mid-August 2020. Thank you to all those who have participated so far. Our target is to survey at least 60% of the 55+ demographic in the Coromandel/Colville Ward meaning we need to reach 800+ residents.

To date we have distributed over 400 surveys and gathered back 340 responses.

Colville and north is next on our agenda, CILT would like to ensure we consult a large cross section of the ward, if you fit into this demographic we encourage you to partake in the survey.

You can register your details with CILT on 866 8358 or Luana Johnston on call us on 027 473 6494 or you can fill the survey out online at <https://www.cilt.org.nz>

Looking for a Midwife?

I'm an experienced midwife who loves living in the beautiful northern Coromandel. I provide community primary midwifery care and cover the upper and western side of the peninsula from Port Jackson to Manaia , including Colville & Coromandel Town.

Sheryl Wright

Moehau Midwives

Phone (022) 500 1310

www.birth.net.nz

moehau.midwives@gmail.com



<p>Community Law Walkato <small>Te Kaitiaki Take Kōwhiri o Aotearoa</small></p> <p>Free Legal Services* <small>(*Eligibility Criteria applies)</small></p>	<p>ph: 0800 529 482 visiting Thames fortnightly 12.30 - 2</p>
--	---



COLVILLE LAWNS PROPERTY MAINTENANCE

LAWNS MOWED, LINE TRIMMING, CHAINSAW WORK, RUBBISH REMOVAL, GARDENING, WEED CONTROL, GUTTERS CLEARED. etc.

Seamus 021 0264 1000

colvillelawns@gmail.com



D & K HOME IMPROVEMENT HANDYMAN

Ph. David Porter 027 224 8925

email: davidkim@colville.org.nz



Bryan: 021 799 056

www.gardentools.nz



Joanna: 021 739 398

LIFETIME GUARANTEES



White Star Honey

Producing Local Delectable Honey

Available from Colville General Store, Coromandel Meat Keeper or direct at White Star Station / Colville Farm Holidays. Contact Tellic 021 770 382 or email wshoneynz@gmail.com

**Self Service Coin Operated
Washing Machine and Dryer
OPEN 7 days**

Available at White Star Station / Colville Farm Holidays 2140 Colville Road, Colville Coromandel (2 minute's drive, 1.7km South of the Colville General Store towards Coromandel Town)

Follow the signs at the front Gate.

\$4 per wash \$4 for 45 minutes approx drying time.

Takes \$1 and \$2 coins.



*His holiness the Dalai Lama, when asked
about what surprised him most about humanity said:-*

*Man, because he sacrifices his health in order to make money, then he sacrifices
money to recuperate his health and then he is so anxious about his future, that
he does not enjoy the present.*



WHATS ON IN THE NORTHERN COROMANDEL

Regular events

Enliven - every Thursday

Yoga - every Tuesday Colville Hall 10am

Sunset Yoga - every Thursday With Vanessa @ colville SchoolHall. 5 - 6 15pm.

June /July Events

June 28 - Sun - Port Charles Voluntary Fire Brigade AGM 11 am All Welcome.

July 17 - Friday- Youth Sailing Academy AGM 10 am at Karuna Falls. Followed by
pot luck dinner. All welcome.

August events

August 8 - Sat - Darts at Tangiaro.

IMPORTANT NUMBERS

111 Fire, ambulance, police emergencies needing immediate assistance
105 Police - for reporting incidents not requiring an immediate response
0800 CRIMESTOPPER For reporting crime (anonymous)
0800 611 116 For medical advice or information 24/7
0800 787 797 Alcohol Drug Line 24/7
0508 828 865 Suicide Crisis Helpline
0800 543 354 Lifeline
0800 111 757 Depression Helpline: free text 4202
0800 688 5463 Outline
0800 376 633 Youthline
0800 764 766 National Poison Centre
07 8666 920 Colville Social Service Collective
07 8666 618 Colville Community Health Centre
07 8666 615 Colville School
07 8666 805 Colville General Store
07 8668 319 Colville Bay pre school
07 866 8702 Coromandel Pharmacy M-F 8.30-5pm; Sat 9am-1pm