

PĀNUI

AUGUST 2020

Newsletter for the Northern Coromandel



2311 Colville Rd, Colville, 3584

PHONE: 07 866 6920 cssc@colville.org.nz

HOURS: 10am - 3pm TUES, WED, FRI

Closed MON, THURS

panui@colville.org.nz www.cssc.net.nz

Kia ora tātou

Wow believe it or not! we are at the end of the 7th month already, lambs leaping, sun a tad warmer and yes, getting more light to complete the endless tasks which fill our day. Strangely disconcerting knowing many people in rest of the world are not so fortunate, struggling with masks, anxiety, and Covid deaths. We hope very soon life will improve for everybody.

Disclaimer: The opinions expressed in this publication are not necessarily those of CSSC

Guidelines for contributions

Contributions are welcome but may not always be used. We may also edit them.

Email us your news, notices, advertisements, jokes, recipes, dreams & handy hints.

Please send in Word or Open Office (not PDFs). Or post, or drop contributions into CSSC.

**Deadline for the September issue:
Tues 18 August**

Subscriptions if you live outside delivery area

For an electronic copy (which comes in colour): email panui@colville.org.nz with 'subscription' in the subject line.

For a mail copy: email/phone us. Subscription cost for printed copies is \$25 per annum. Contact us on

07 8666 920 or email us at panui@colville.org.nz

Contact Information

Phone 07 8666 920

Email: cssc.net.nz

2311 Colville Road, Colville.

Hours:

Tues,Weds, Fri 10am -3pm

Mon & Thurs Closed

Closed for lunch 12.30-1pm

Coordinator - Larisa Webb

csscordinator@colville.org.nz

021 258 8037

Financial Administrator

Nicole McCauley

csscfinance@colville.org.nz

Community Worker - Peter Selwyn

communityworker@colville.org.nz

021 057 2176

Phone/email/drop in to make an appointment (available Tues & Fri)

Community Development Worker -

Pamela Grealey

cdw@colville.org.nz

Colville Harbour Care Nursery

Beth Pearsall

chccordinator@colville.org.nz

021 237 8678

Youth Group - Elizabeth Mitchell &

Nathan McCauley

youthgroup@colville.org.nz

Pānui editor- Kate Shelley

panui@colville.org.nz



Support Colville Youth Sailing!

T-shirts in assorted colours and sizes.
Just \$25 (\$30 posted) contact:

spike.mo@gmail.com or 022 604 7975



Colville Social Service Collective (CSSC) would like to thank our funders and supporters :-

Acknowledgment of Service:

Kate Shelley

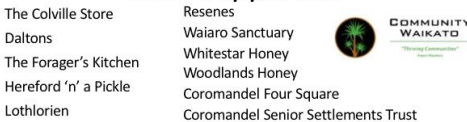
CSSC Main Funders



CSSC Funders



CSSC Supporters



CSSC would like to express our immense gratitude to our funders and supporters

The Colville Social Service Collective Trust (CSSC) would like to acknowledge the resignation of Kate Shelley as Trustee. Kate has served as a Trustee for a great many of the years since CSSC was incorporated as a charitable trust in 1998. Kate has consistently attended matters of Trust business, always advocated for her community, and served as Trust Secretary for a number of years.

The role of Trustee is a voluntary one, and we sincerely thank her for her long service.

Ngā mihi

Colville Social Service Collective Trust and Staff

If you would like to support CSSC you can donate online with a bank deposit to:

CSSC 38 9009 0798558 00

(and put donation in the reference field) or

contact Larisa

cssccordinator@colville.org.nz

Volunteer Vacancy



CSSC has a regular volunteer role available sorting Op shop donations. If you're interested please contact Larisa, (CSSC Coordinator) by dropping into CSSC, emailing: cssccordinator@colville.org.nz, or phoning 866 6920. A HUGE thank you to all our current volunteers – you are a vital part of the team!

Youth Mentor Programme

Would you like to learn to surf? Weave a kete? Restore an old motorbike? Take up an instrument? Create your own on line game? Get some work experience? Or hang out with someone creative and kind? If you are aged between 12 and 24 Colville's new youth mentor programme is for you - contact Spike at colville.mentor@gmail.com to find out more.



COLVILLE
COMMUNITY HEALTH TRUST

Kia ora koutou,

We have lots of good news this month!

First, we still have pots of that wonderful Manuka Honey-Kumarahou tonic available - keep an eye out for a flyer in your mailbox soon with more information. Second, the community's response to our plea for donations has been spectacular! With your generous help we have been able to buy much needed equipment for the Health Centre, and the Building Fund has grown by \$5000. Thank you all!

In other news, the Health Trust has been offered the use of a house in town. Our immediate plan is to house medical students there, making Colville an even more attractive option for young trainee doctors to experience rural practice. This house comes unfurnished, so our next challenge is to source furniture and appliances.

We will need a fridge, beds, table and chairs, etc, so if anyone has items taking up space, and would like to donate them to a good cause, please let us know?

(07 866 6618 / colvilletrustmanager@gmail.com)

And finally, we need to keep those new stethoscopes warm, so if anyone has any spare firewood, we would be very grateful if some could come our way! Ngā mihi



Under the Dog Control Act 1996 new puppies and microchipped within two months of first registration.

Failing to do so may result in an infringement offence of \$300.

Drop-in to one of the TCDC Council Service Centres between 9am-12pm on the following Mondays to have your dog microchipped by one of our compliance officers for \$25:

Monday 3 August – 355 Kapanga Road, Coromandel Town

Monday 10 August - 10 Monk Street, Whitianga

Monday 24 August – 515 Mackay Street, Thames



The Colville Project

www.thecolvilleproject.nz

The Colville Project is looking for someone with experience in the field of mobile and reconfigurable buildings to join their Building Advisory Group. This is a voluntary position and requires occasional meetings with the group to help guide the ethical building standards of the centre and associated buildings.

Coffee and biscuits will be provided at all advisory group meetings, if interested please contact thecolvilleproject@gmail.com

Colville Harbour Care is open for business. We have beautiful native trees for sale. All our trees are grown from seed, eco sourced from the Northern Coromandel.

Sales by appointment. Contact Beth on 031 237 8678 or chccoordinator@colville.org.nz for a price list. Discount for bulk orders are available



Colville First Response



St John
Here for Life

After many years and many hours of being a Volunteer Ambulance Officer responding to all and everything, we said farewell to Jan Autumn. Jan became an integral part of the St John Colville First Response Team in 2010 after transferring from Coromandel St John. During the busy 2012/2013 holiday season a very dedicated team of 2 staff including Jan worked with the PRIME Nurses and Dr out of Colville servicing Colville's emergencies. Jan was thanked at her farewell dinner and awarded her twelve-year service medal by our St John patron Richard Blundell KSTJ. Jan thank you for your outstanding service and commitment to Colville Community and Northern Coromandel Peninsula.

Tip of the month: Please check your Rapid Response Numbers on your property are clearly able to be seen from the road. So, in times of Emergency we can find you. Are your numbers easily seen during the day and at night, on your letterbox or fence and they are not obstructed by plants or trees?

Also check that your driveway clear is from tree branches that prevent the Ambulance or Fire Engine from getting to you? We can't help you if we can't get to you.

Community Law Waikato

is providing a great opportunity to study Law:

presenting their 'Learn about the Law' series – Online'.

To register, please email your name and contact phone number, or you can visit their website to register :-

<https://www.clwaikato.org.nz/page/legal-education/#anchor1>

These sessions are \$5.00 per session. Once you have registered you will be emailed a link to 'join' the education session. If you would like to attend these sessions and cost is an issue please email liaison@clwaikato.org.nz.

Topic (subject to change)	DATE (10am to 12pm)
Maori Land	4-Aug-20,
Consumer Rights	6-Aug-20,
Property Law including Relationship and Divorce	11-Aug-20,
Youth Law	13-Aug-20
Adults with Disability (EPOA, Welfare Guardian & Property Management)	18-Aug-20
Tenancy	20-Aug-20
IRD - Kiwisaver, Child Support, Parental Leave Payments	25-Aug-20 (one hour)
Wills & Powers of Attorney	27-Aug-20
Credit Contracts	3-Sep-20
Dispute Resolution	10-Sep-20
Health and Disability (10am to 11am)	24-Sep-20
Mental Health Law	1-Oct-20

Colville mini Spring Fest 4-5 September 2020

Not long now - The Stage is Set - Hold your Horses ...

As long as we stay at level 1 it's a go.

Hand sanitisers etc will be provided. Put on Masks or Bandanas if you wish.

So to reiterate: Friday Sept 4th 7.30pm - Colville Sings Country.

\$25. Age 16 up please. Tickets essential - available at Colville Store or Richardsons Coro.

Tea/Coffee etc provided at half time.

Dress up country style.

Saturday Sept 5th - Country Party !!! YeeHaw

\$20 door sales - cash only. Under 16 KOHA

5pm Kids Disco.

Then DJ DOC WESTIE & DJ ISSAC LEVI TUCKER.

Don't forget:

* Saturday night Pie Baking Competition. Savoury and/or Sweet

* Dress up Country both nights

* Prizes for best pie and best costume

* Low alcohol event (no boxes or bottles of spirit in the hall)

See you there!!!

More details and contacts: www.colvilleartsfestival.co.nz

GOLVILLE *mini* SPRING FEST

GOLVILLE SINGS COUNTRY
7.30PM FRIDAY 4TH SEPTEMBER 2020
\$25 AGE 16+
Tickets essential @ Colville Store & Richardsons Coro
*** Costume Competition ***

COUNTRY PARTY
DJ DOC WESTIE & DJ ISAAC LEVI TUCKER
5PM SATURDAY 5TH SEPTEMBER 2020
\$20 / KIDS UNDER 16 KOHA
Doors Sales - Cash Only
* Kids Disco * Best Costume Prize * Pie Competition + Dinner *

GOLVILLE HALL

www.colvilleartsfestival.co.nz

COLVILLE COMMUNITY HEALTH CENTRE

2299 Colville Rd, RD 4, Coromandel 3584

Phone 07 8666618. Fax 07 8666619 Our txt number for the clinic is 4448

Mon, Tues, Thurs & Fri 9.00am – 4.00pm / Wed 10.00am - 4pm

- GP Clinic at Port Charles – Cancelled till further notice

For afterhours service phone the clinic number 07 866-6618.

Please listen to the message carefully.

The On Call person will be paged by the afterhours service.

The answerphone service operates during the hours we are open

if all lines are busy or if we are closed for lunch

Remember - If it's an emergency, dial 111



Kia ora koutou katoa

I don't know about you but it seems like we have had enough rain now. Not so long ago we were really desperate for it. Such is nature. Hopefully we will still get some nice clear nights to enjoy Matariki.

Hot off the press today from Dr Ashley Bloomfield "It has been 80 days since the last case of COVID-19 was acquired locally from an unknown source. This is a significant achievement and underpins the ability for us all to enjoy life being back to 'near normal'. The greatest risk of re-introduction of COVID-19 into the community continues to be from people travelling to New Zealand and those working around the border and in managed isolation and quarantine facilities. It is important New Zealanders do not become complacent about the threat of COVID 19, the pandemic continues to accelerate overseas. Rapid contact tracing will underpin our ability to contain any local transmission and I encourage you all to use the NZ COVID Tracer app to support this." Something worth considering especially if you are out and about a bit.

During August we are having Sue Price, a Nurse Practitioner come and locum at the practice. Nurse practitioners, are registered nurses, who are formally trained and have knowledge of how to diagnose, treat - including prescribing and manage many common ailments. It would be great for our patients to utilise Sue whilst she is here giving Dr Kate a well deserved break. It is really helpful for us if you our registered patients use our locums as it takes the pressure off returning to a huge list of people waiting.

In order to ensure our records are all up to date, we are asking patients to check their details on their arrival slips when they come to the clinic. If you haven't been to the clinic but are aware that your phone number has changed, or you have now got email or you have changed addresses etc., please let the clinic know as soon as you can. One day it could just be vitally important and it can be quite distressing for us when we need to contact people and everything bounces back.

Till next time keep dry and safe,

The team at Colville Community Health Centre.



Mahamudra Centre for Universal Unity



ph 07 866 6851 www.mahamudra.org.nz

At our Mahamudra Centre the winter program continues with visiting FPMT teacher Venerable Khadro.

Ven Thubten Khadro was born in Venezuela of European parents, immigrated to a New Zealand in 2004, and has lead courses/retreats in NZ, Australia, Colombia, India, Nepal and Germany. Her “international” background allows her to have an open, friendly and warm manner. She is currently studying an online Master Programme in Buddhist Philosophy, has done many solo retreats and for some months of the year lives in semi-retreat at Lawudo, a hermitage in the Himalayas, Nepal. She is a Buddhist Hospice/ Healthcare Chaplain, a FPMT registered teacher, and has served in various FPMT Centers.

Retreat and Courses:

- + Introduction to Buddhism Course: 31st July, 1st & 2nd August
- + Peaceful Living - Peaceful Dying Course: 14th, 15th, 16th August
- + All about Karma Course: 28th, 29th, 30th August

On-Line Courses:

- + What is Karma? - Tuesdays in July – 7th, 14th, 21st & 28th @ NZST 6.30pm to 8pm
- + Death & Rebirth - Tuesdays in August – 4th, 11th, 18th & 25th @ NZST 6.30pm to 8pm
- + Buddhism in a Nutshell - Tuesdays in September 1st, 8th, 15th, 22nd & 29th NZST 6.30pm - 8pm

Practice Days:

- + Purification Practice Day: 11th July & 8th August
- + Merit Practice Day: 25 July & 22 August

For more detailed information on our retreats and courses please visit our website.

<https://mahamudra.org.nz> Much love, The Team at Mahamudra

COROMANDEL BUDGET ADVISORY SERVICE INC

Life can be busy enough and bills are something we can never avoid, so if you can find a balance and be in control of your financial situation that can be one less worry

At Coromandel Budget Advisory Service, we aim to help people who may be struggling to find a way to manage and maintain their finances.

If you would like help with working on a budget, getting debt under control or have other financial issues, we are here to help. Our service is free and totally confidential.

Why you might need us?

- * You have debts that need to be paid, perhaps they are overdue?
- * Need help with creditors?
- * Would like to have more control of your financial situation?

What we can offer you

- Advocacy with creditors such as power and phone companies, finance companies and other lending organisations
- We work with you to create a realistic budget
- Foodbank access whilst dealing with debts

A Coromandel Budget Advisory Service mentor is available at the Colville Social Services Collective, Wednesday mornings by appointment. To make an appointment please call us on **07 866 8351**.



COLVILLE STORE NEWS



opening hours: Mon-Sat 8.30am-5pm
Sundays 8.30am - 4pm

Ph 07 866 6805
colvillegeneralstore@gmail.com

Looking for a Midwife?

I'm an experienced midwife who loves living in the beautiful northern Coromandel. I provide community primary midwifery care and cover the upper and western side of the peninsula from Port Jackson to Manaia, including Colville & Coromandel Town.

Sheryl Wright
Moehau Midwives
Phone (022) 500 1310
www.birth.net.nz
moehau.midwives@gmail.com



**Colville Bay Pre-School
Pizza Fundraiser Evening Presents**

Nathan's

RECORDING

Evening

Check out recordings Nathan has collected from past acts and his own instrumental compositions.

No covers, all original tracks

Classic Colville Bands
from the past.

Nathan's lock down
compositions.

Nathan's electronica
grooves.



At the Foragers Cafe - Colville
Friday, 28th of August - 5 pm.
Pizza for sale - cash only (no efpos available)

COLVILLE MUSIC CLUB FUNDRAISER



FRIDAY 7 AUGUST 2020
6PM AT COLVILLE HALL
\$10 entry, cash only - no efpos.

GREAT LOCAL BANDS
FOOD & RAFFLES



Leghold Trapping

With an increase in possum trapping in our area over winter it's timely to remind people that possum traps set incorrectly, ie on the ground, endanger the lives of our precious kiwi.

Most leg injuries to kiwi caused by incorrectly set traps result in euthanasia or the kiwi being predated upon by another animal (dog, ferret etc) while stuck in the trap.

We can help protect kiwi by raising the trap off the ground by 35-70 cm. This will prevent kiwi from walking over the trap and being caught, but will not affect the efficiency of the trap. There are a number of ways to raise the trap, you can either use two nails to attach the trap to a tree or use a wooden board as a shelf to sit the trap upon.

Visit the Kiwis for kiwi website for a downloadable info sheet on how to avoid kiwi while trapping.

If you or someone you know leghold traps for possums please make sure to share this information with them. Our area is real kiwi country – let's keep it that way!

Winter Lecture Series

Our Winter Lecture Series will run a little shorter than normal this year. But we are excited to announce that we have two speakers booked. First is Freshwater Ecologist Stephanie Parkyn talking about 'The Secretive Life of Kōura: NZ's Freshwater Crayfish' on Sunday 23rd August. Then on the 13th September Sandy Bartle, curator of birds at Te Papa 1976-2012, will talk about his favourite topic, seabirds.

See you at the Peppertree, talks start at 7pm.

MEG Operations

Our field team have been working with the Department of Conservation, pre and post Covid-19, cutting tracks and installing bait stations on the DOC block at Papa Aroha.

It's great to have some conservation work happening in this significant forest in the Papa Aroha area.

From the team at Moehau Environment Group info@meg.org.nz www.meg.org.nz



If you are over 55 and would like a say on the future for seniors living in the Coromandel-Colville ward. Please take the opportunity to complete a community survey available in Colville at CSSC or the Medical Centre. Or complete online at www.cilt.org.nz

closing date 17th August.

Introducing **David Wright**

For those of you who don't know me I thought I would let you know a bit about me and what services I can now offer the local community. I am a qualified tradesman and completed my Fitter / Turner apprenticeship at TRT Transport in Hamilton in 1992. After heading away with my wife Sheryl on our 'Big OE' I returned in 1994 and worked as a maintenance fitter at Lumbercorp in Ohinewai, leaving three years later to go underground as a fitter in the Huntly East Mine. In 2007 I set up my own business in Huntly and since then have enjoyed working with a huge range of clients. My main client was one of the local quarries but I have also undertaken work for all types of farmers, timber yards, earthmoving contractors, feed wagon suppliers, the steam tramway society and even the local funeral director! I have always had a love for the north western Coromandel and have been holidaying in the area since I was a kid. I have always dreamed of moving up here and in 2012 bought a property in Colville with the hope of retiring here some day. In 2015 I was elected Chairperson of the Colville Water Supply Society and was very involved in the revamp of the water supply system. Last year very unexpectedly I had the opportunity to make the move up here a lot sooner than I had ever hoped and with my three kids having flown the nest I jumped at the chance! It's been a busy year making the move, setting up my workshop and supporting my wife Sheryl (who has set up in business locally as a community midwife) but I am now ready to offer my services and get working again. I get a lot of satisfaction from fixing stuff. I like a challenge and problem solving. I will give anything a go and no job is too big or too small. Please don't hesitate to give me a call if I can help with your next project or repair.

David Wright

wright Contracting Services

General and Heavy Engineering including:

- Welding
- Machining / Fabrication
- Hydraulics
- Machinery Repair / Maintenance

No job too big or small!

Onsite or at my Colville workshop

Phone: (021) 100 2767

Email: dewwrightnz@gmail.com



Northern Coro Rubbish
Collections for
August

Tues 4



Tues 11



Tues 18



Tues 25

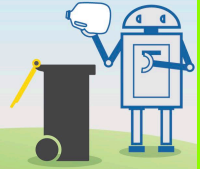


KERBSIDE PLASTIC RECYCLING CHANGE

LOOK FOR THE NUMBER



Only plastics 1 & 2
will be collected
for recycling



RECYCLING REMINDER

TCDC no longer collect plastic types
3 - 7.

ONLY plastic types 1&2, tins,
paper & cardboard go in the green
wheelie bins. Bear this in mind when
you are shopping.



Forest & Bird

TE REO O TE TAIAO | *Whiriwhiri Raukaua a Vaka*

A.G.M.

Saturday 1 August

Guest Speaker : Andrew Crowe,
Author & Natural Historian

*"Pacific Exploration: the navigational role
traditionally played by birds"*

Where:

St John's Ambulance Rooms, Tiki Road

When:

11 a.m. Annual General Meeting
12 p.m. Shared lunch (please bring plate)
1 p.m. Guest Speaker – Andrew Crowe

All very welcome

Upper Coromandel Branch



Coro Refuse & Recycling
Centre.



Goldmine shop open



Please Facebook us for guidelines for
recycling.

Tuesdays & Thursdays

11 - 4.30

Saturdays & Sundays

11 - 5.30

525 Hauraki Rd, Coromandel.
07 866 7616

FARM SHOP
COLVILLE VILLAGE

Ph 8666 937

herefordnapickle@gmail.com



OPEN ALL OF AUGUST

CLOSED MONDAYS

9:30am to 4pm

Pop in for great coffee, a sweet treat, hot chips, creamy chowder, mince on toast, spicy nachos and of course our amazing 100% pure Hereford Beef Burgers. All our tasty regular favourites too.



FRIDAY NIGHT BURGER



Phone orders welcome

**100% HEREFORD BEEF BURGERS * HOT CHIPS * COFFEE * BAKING *
PICKES 'N' JAMS * LOCAL ART * REAL FRUIT ICECREAM * MEAT**

**100% HEREFORD BEEF BURGERS * HOT CHIPS * COFFEE * BAKING *
PICKES 'N' JAMS * LOCAL ART * REAL FRUIT ICECREAM * MEAT**



LIKE US ON
FACEBOOK



*** Yes we are open for business ***

Winter opening hours are as follows

CAFÉ—Wednesday to Sunday 10am—5pm

RESTAURANT—Wednesday to Sunday with bookings only

Next darts game **SATURDAY 8th AUGUST**

CLOSED = MONDAY & TUESDAY

Relax & Revive Coromandel

www.relaxcoro.co.nz

Certified Massage Therapist
Relaxation Massage

Jan is not available over Winter this year. Back on deck in Spring.

By appointment
Email: info@relaxcoro.co.nz
Ph 021 268 6198



Eligible
for a
Rates
Rebate?



The maximum rebate this year has increased to \$665.

Phone: 0800 257 77 8.
(automated service)

For more information see tcdc.govt.nz/rates_rebate or call 07 868 0200.

Rates bill date change

TCDC have changed rates instalment dates to 15 October, 15 February 2021 and 15 May 2021.

Colville Bay Pre-School



Haere Mai!

Bring your children to Pre-School for fun & learning!
We are the blue building behind Colville School.

Tuesday to Friday 9am to 3pm during School terms.

20 Free ECE hours for 3 years and over. WINZ subsidies available.

Term 3 ends 25th Sept. Term 4 begins 13th October. On Wednesday mornings we have a Parents & Toddlers group while our 4 & 5 year olds are at Bush Kura.

We welcome new enrolments. Come and meet us

Phone – 07 8668 319 or 021 156 5185 Email – colvillebay.elc@xtra.co.nz



Condolences and sympathy go out to the family and friends of

JOCELYN DIANA STRONGMAN

Who died unexpectedly on 29th June 2020 aged 80 years

 <p>Free Legal Services* (*Eligibility Criteria applies)</p>	<p>ph: 0800 529 482 visiting Thames fortnightly 12.30 - 2</p>
------------------------------------------------------------------------------------------------------------------------------------------------------------	-----------------------------------------------------------------------



COLVILLE LAWNS PROPERTY MAINTENANCE

*LAWNS MOWED, LINE TRIMMING,
CHAINSAW WORK, RUBBISH REMOVAL,
GARDENING, WEED CONTROL, GUTTERS
CLEARED. etc.*

Seamus 021 0264 1000

colvillelawns@gmail.com



D & K HOME IMPROVEMENT HANDYMAN

Ph. David Porter 027 224 8925

email: davidkim@colville.org.nz



Bryan: 021 799 056

www.gardentools.nz



Joanna: 021 739 398

LIFETIME GUARANTEES



White Star Honey

Producing Local Delectable Honey

Available from Colville General Store, Coromandel Meat Keeper or direct at White Star Station /
Colville Farm Holidays. Contact Tellic 021 770 382 or email wshoneynz@gmail.com

**Self Service Coin Operated
Washing Machine and Dryer
OPEN 7 days**

Available at White Star Station / Colville Farm Holidays 2140 Colville Road, Colville Coromandel (2
minute's drive, 1.7km South of the Colville General Store towards Coromandel Town)

Follow the signs at the front Gate.

\$4 per wash \$4 for 45 minutes approx drying time.

Takes \$1 and \$2 coins.



*Only when you can be extremely pliable and soft,
can you be extremely hard and strong.*



Zen proverb

WHATS ON IN THE NORTHERN COROMANDEL

Regular events

- Enliven - every Thursday 10 am
Yoga - every Tuesday Colville Hall 10am.(cancelled August 18)
Sunset Yoga - every Thursday with Vanessa @ Colville School Hall. 5 - 6.15pm

August events

- Sat 1 - Forest and Bird AGM 11 am. Guest speaker Andrew Crowe.@St Johns Coro
Fri 7 - Colville Music Club fundraiser @ the Colville Hall 6pm
Sat 8 - Darts Night at Tangiaro
Mon 17 - Closing date for Senior Community Survey
Tues 18 - Cut off date for September Panui contributions
- Colville/Coro community board meeting @ Colville Hall 10am
Fri 28 - Pre school Pizza Fundraiser with Nathan's recordings
@ the Foragers Cafe 5pm (cash only)

September events

- Fri/Sat 4 & 5 - Colville Mini Fest @ the Colville Hall
Fri 25 - End of Term 3

IMPORTANT NUMBERS

- 111 Fire, ambulance, police emergencies needing immediate assistance
105 Police - for reporting incidents not requiring an immediate response
0800 CRIMESTOPPER For reporting crime (anonymous)
0800 611 116 For medical advice or information 24/7
0800 787 797 Alcohol Drug Line 24/7
0508 828 865 Suicide Crisis Helpline
0800 543 354 Lifeline
0800 111 757 Depression Helpline: free text 4202
0800 688 5463 Outline
0800 376 633 Youthline
0800 764 766 National Poison Centre
07 8666 920 Colville Social Service Collective
07 8666 618 Colville Community Health Centre
07 8666 615 Colville School
07 8666 805 Colville General Store
07 8668 319 Colville Bay pre school
07 866 8702 Coromandel Pharmacy M-F 8.30-5pm; Sat 9am-1pm