

# PĀNUI

February 2021

Newsletter for the Northern Coromandel



2311 Colville Rd, Colville, 3584

PHONE: 07 866 6920      [cssc@colville.org.nz](mailto:cssc@colville.org.nz)

HOURS: 10am - 3pm TUES, WED, FRI

Closed MON, THURS

[panui@colville.org.nz](mailto:panui@colville.org.nz)      [www.cssc.net.nz](http://www.cssc.net.nz)

Kia ora

**CSSC will be Closing midday Tuesday  
22 December 2020**

**Reopening 9am Wednesday 20 January  
2021.**

Hoping 'the holidays' go peacefully,  
healthily & happily for everyone. It has not  
been the a very comfortable year for most  
of us, with Covid preventing any serious  
forward planning. *SO GRATEFUL* to live in  
our beautiful Aotearoa.

*Disclaimer: The opinions  
expressed in this publication are  
not necessarily those of CSSC*

## **Guidelines for contributions**

Contributions are welcome but may not  
always be used. We may also edit them.

Email us your news, notices,  
advertisements, jokes, recipes, dreams &  
handy hints.

Please send in Word or Open Office (not  
PDFs). Or post, or drop contributions into  
CSSC.

## **Deadline for the March Issue**

***Tues 16 February***

Subscriptions if you live outside  
delivery area

For an electronic copy (which comes in  
colour): email [panui@colville.org.nz](mailto:panui@colville.org.nz) with  
'subscription' in the subject line. For a mail  
copy: email/phone us. Subscription cost  
for printed copies is \$25 per annum.  
Contact us on 07 8666 920 or email us at  
[panui@colville.org.nz](mailto:panui@colville.org.nz)

## **Contact Information**

Phone 07 8666 920

Email: [cssc.net.nz](mailto:cssc.net.nz)

2311 Colville Road, Colville.

### **Hours:**

Tues, Weds, Fri 10am - 3pm

Mon & Thurs Closed

*Closed for lunch 12.30 - 1pm*

### **Manager - Larisa Webb**

[cscscoordinator@colville.org.nz](mailto:cscscoordinator@colville.org.nz)

021 258 8037

### **Financial Administrator -**

**Nicole McCauley**

[cscsfinance@colville.org.nz](mailto:cscsfinance@colville.org.nz)

### **Community Worker - Peter Selwyn**

[communityworker@colville.org.nz](mailto:communityworker@colville.org.nz)

021 057 2176

Phone/email/drop in to make an  
appointment (available Tues & Fri)

### **Community Development Worker -**

**Pamela Grealey**

[cdw@colville.org.nz](mailto:cdw@colville.org.nz)

### **Colville Harbour Care Nursery -**

**Beth Pearsall**

[chccoordinator@colville.org.nz](mailto:chccoordinator@colville.org.nz)

021 237 8678

### **Youth Group - Elizabeth Mitchell &**

**Nathan McCauley**

[youthgroup@colville.org.nz](mailto:youthgroup@colville.org.nz)

### **Pānui editor- Kate Shelley**

[panui@colville.org.nz](mailto:panui@colville.org.nz)

### **Youth Mentor programme -**

**Spike Mountjoy**

[colville.mentor@gmail.com](mailto:colville.mentor@gmail.com)

022 6047 975

*He who blames others,  
has a long way to go on his  
journey.*

*He who blames himself is half way  
there.*

*He who blames no one has  
arrived.*

*Chinese proverb*

Colville Social Service Collective (CSSC) would like to thank our funders and supporters :-

### CSSC Main Funders



### CSSC Funders



### CSSC Supporters



*CSSC would like to express our immense gratitude to our funders and supporters*

## VACANCY: Youth Community Development Worker



Colville Social Service Collective has a vacancy for a new role – a Youth Community Development Worker. This role will be focused on identifying and implementing initiatives for our rangatahi – youth.

This is a fixed-term (1-3 years funding dependent) part-time position. For more information and a copy of the Job Description. Please contact Larisa on [csscordinator@colville.org.nz](mailto:csscordinator@colville.org.nz) or phone 8666 920. Applications close 5pm, 9 December (please note this is an extension to the November deadline).

If you would like to support CSSC you can donate online with a bank deposit to:

CSSC 38 9009 0798558 00  
(and put donation in the reference field) or  
contact Larisa  
[csscordinator@colville.org.nz](mailto:csscordinator@colville.org.nz)

## CARSON Art Calendar 2021

Fundraising for Colville Easter Festival 2021

\$28 at Colville Store or order direct from CSSC 07 8666 920

13 images of Steve Carson's art work. Limited amount, so be quick.



## The Colville Project review of the year

Well 2020 was quite the year, we only managed to hold one fund raising event, a sausage sizzle at Clay Day in Coromandel Town in January, due to the Nationwide lock. However online donations continued to gently roll in and the total TCP funds raised as at 31st October stands at \$252,002.81, with a further significant amount in the building fund which is held by the Colville Community Health Trust.

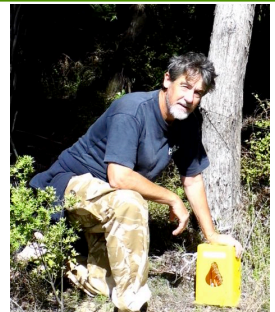
Despite the set back our volunteers worked hard to ensure that momentum didn't stall, a big thank you to them, including our Trustees Kate Armstrong, Bronwyn Blair, Frederick Church and Jo Herbert who are all volunteers, and Michael James and Janet Palmer for their continued support.

We are also seeking further active volunteers to help create and organise fund raising activities for 2021 events, please send your details to [thecolvilleproject@gmail.com](mailto:thecolvilleproject@gmail.com) We continued to search for the perfect spot for the wellbeing centre and have had ongoing discussions with Iwi and BECA as to the optimal areas to place our buildings. In addition we have been talking to TCDC about suitable lease sites in the area, including the cemetery land at Woods Road. Let us know if you know have somewhere that might fit the bill.

A big thank you to everyone who has contributed in any way to the project this year, we cannot thank you enough for all your hardwork and continued support. Together we can realise The Colville Project vision. We wish you Happy Holidays, a prosperous New Year and an enjoyable break. Ngā mihi nui, Emily & Pamela of The Colville Project.



COLVILLE HARBOUR CARE  
Te Umangawhā o Ngā Waka



### Colville Harbour Pest management

The important work of protecting our native flora and fauna from pests around the Colville Harbour continues. Under the care of our dedicated Pest Manager, Nathan McCauley, 357 rat and mice traps are regularly monitored. In 2020 we have already caught 738 mice and 65 rats. We wish to sincerely thank the Waikato Regional Council for continuing to fund pest control and monitoring.

We were very fortunate this year to receive funding from the Thames Coromandel District Council for 30 possum traps. Nathan generously volunteered his time to install and monitor these traps. Since installation in October, Nathan has already caught 36 possums – clearly highlighting the need for possum control in this area.



**COLVILLE**  
COMMUNITY HEALTH TRUST

Kia ora,

The Health Trust has been fundraising for years for a new building for the Colville Community Health Centre. In 2016 we joined Colville Social Service Collective in a collaboration which became The Colville Project, and since then our fundraising has continued towards the new health facility as part of TCP's wellbeing and education centre.

Our next fundraising opportunity is an exciting one. Lindsay Garmson, organiser of the Coromandel Christmas Exhibition, has arranged an online art auction to take place during the exhibition from 20 December to 15 January. A group of wonderful artists have donated artwork to the auction, and all proceeds will benefit the building fund for the new facility. We could not be more grateful to Lindsay, and to Lena for doing the poster and tech work of setting up the auction, and of course, to the artists themselves. For more details see the December issue of the Coromandel Chronicle, or check our website ([www.colvillecommunityhealthtrust.com](http://www.colvillecommunityhealthtrust.com)). All artworks being auctioned will be available for viewing at the Hauraki House Gallery during the exhibition. For the auction itself, search for 'Coromandel Christmas Exhibition 2020/21 on Trade Me.

### **COROMANDEL BUDGET ADVISORY SERVICE INC**

Life can be busy enough and bills are something we can never avoid, so if you can find a balance and be in control of your financial situation that can be one less worry. At Coromandel Budget Advisory Service, we aim to help people who may be struggling to find a way to manage and maintain their finances. If you would like help with working on a budget, getting debt under control or have other financial issues, we are here to help. Our service is free and totally confidential.

Why you might need us?

You have debts that need to be paid, perhaps they are overdue?

Need help with creditors?

Would like to have more control of your financial situation?

What we can offer you:

Advocacy with creditors such as power and phone companies,  
finance companies and other lending organisations

We work with you to create a realistic budget

Foodbank access whilst dealing with debts

A Coromandel Budget Advisory Service mentor is available at the Colville Social Services Collective, Wednesday mornings by appointment.

To make an appointment please call us on 07 866 8351.

Wishing everyone a Merry Christmas and a safe a Happy New Year.

## UCLA CONSERVATION REPORT DECEMBER

UCLA would like to remind locals involved in the important work of saving our native bush, that our own local community board has passed multiple non-binding resolutions to "Advocate that the Coromandel-Colville Ward be used as an example of how effective animal pest control can be using hunting, trapping and non-residual poisons."

In 2017 the Manu Waiata Restoration & Protection Society sought CCCB support to end DOC aerial 1080 drops and the Board resolved to "reaffirm its strong opposition to the use of 1080 in the Coromandel-Colville Ward and its support for alternative methods of pest eradication e.g. hunting, trapping and cyanide."

Our community has spoken loudly, clearly and repeatedly that it wants safe and sensible pest control. Coromandel residents have urged an end to the increasing use of poisons that slaughter hundreds of non-target species, taint our drinking water, cause secondary poisonings, kill pets and working dogs, accumulate in our food chain, kill inhumanely, and threaten tourist and export related jobs. And our Community Board has listened.

MEG however, continues to use highly controversial residual toxins throughout our native bush. In 2017 MEG indicated to WRC's Judy van Rossem and Clare Crickett their intention to use 1080 in Port Charles, along Harriet Kings Road and on Moehau Community land. Four property owners in the Parakete stream watershed (individually named in the public report) all eventually denied MEG access to lay 1080 AFTER MEG requested, and got, an additional \$41,000+GST from the Natural Heritage Fund on top of their \$366,000 operating grant


On P 21 of MEG's 2020 application for funding from WRC, retrieved via OIA. The map is 100% blacked out, redacted. UCLA now awaits the Ombudsman's investigation. The health and safety of neighbours should be paramount. We are seriously concerned for mokopuna and the kai we hunt. No one in the entire area of the upper Coromandel knows whether or not deadly poisons are being laid even within metres of their property lines.

- (1) Report to Finance Committee September 2017
- (2) I talked with Letticia and she explained they don't know what they will be using where until next year but UCLA will be kept informed.

### ***Mining-still a threat***

Oceana Gold, a Canadian/Australian Mining Company is currently positioning itself to begin mining in the hills above Parakiwai behind Whangamata. This is serious and poses a very real threat, not only to the environment of that area but also the wider catchment of Whangamata and to the rest of the Coromandel Peninsula. Oceana has multiple active permits and this would set a precedent.

CLAIM is our local Coromandel/Colville group supporting Watchdog in its effort and the CLAIM AGM will be held on Saturday February 20 at 2pm in the Colville Hall. Many of us have worked tirelessly for the last 40 years to ensure that the Peninsula is not ravaged by the effects of gold mining. Although many gains have been celebrated there is still a very real threat of mining even around Coromandel town. All are welcome to the AGM next February 20 in Colville where up to date information will be provided. Pass it on!





## COLVILLE COMMUNITY HEALTH CENTRE

2299 Colville Rd, RD 4, Coromandel 3584

Phone 07 8666618. Fax 07 8666619 Our txt number for the clinic is 4448

Mon, Tues, Thurs & Fri 9.00am – 4.00pm / Wed 10.00am - 4pm

GP Clinic at Port Charles – Wednesday 2nd December

For the after-hours service phone the clinic number 07 866-6618.

Please listen to the message carefully.

The On Call person will be paged by the after hours service.

When we are open you may get an answer phone message if all lines are busy or if we are closed for lunch. You cannot leave us a message.

Please remember - If it's an emergency, dial 111

Kia ora koutou

What a year for us at the clinic it has been a year of change and challenge. We would like to start this item off with a huge thanks to all of our patients who have been so understanding and supportive as the team at the clinic have navigated their way through the Covid outbreak and a new way of working.

As many will know, we have been advertising for staff and we are not done with our staffing worries yet. A little advanced warning to people, as the busiest period for us arrives, we do anticipate our team will be really stretched. We urge you to get in early if you need repeat prescriptions done before Xmas and book well in advance for reviews if needed. We definitely want to see you if you are sick or injured though! Please remember we can have lots of visitor emergencies over the holiday period and through January that can affect the availability of our clinicians.

From all reports it seems we are in for a hot dry summer. Remember to be careful when out in the sun. Always use sunscreen and better still, cover up with light clothes and a shady hat. Another key to caring for yourself over this hot time is to drink lots of water.

***The Colville Community Health Centre will be closed Friday 25th December, Christmas day, and Monday 28th of December. We will also close for Friday 1st, and Monday 4th January.*** If you require medical care during that time, call the clinic 866 6618, and follow the instructions from the voice message.

**Remember in an emergency call 111**

Enjoy the fun and sunshine that this time of year brings, and take special care out there





Mahamudra Centre  
for Universal Unity  
Mahamudra Centre



## The Art of Mindful Living

By Amrit Saraswati

When we practice mindfulness in our daily lives, we open to the wonders of life and allow the world to heal and nourish us. ----- Thich Nhat Hanh

Buddhism teaches that mindfulness is the key to a content and meaningful life. Without it we would be lost in the wanderings of our minds. To live mindfully is to be aware of what's happening in every given moment—without judgment and without interference, like a mirror that simply reflects whatever comes before it. It keeps us connected to everything, both internal and external. By being mindful, we have the choice and ability to transform challenges into opportunities for growth.

Interested in learning how to develop mindfulness? Join us at Mahamudra for the Art of Mindful Living Retreat with Hedwig Bakker on 4-6 December. During this program, we will focus on the following aspects: paying attention (present moment awareness), embracing what is beneficial, and dealing with challenges or difficult emotions.

### More Upcoming Events and Retreats

- 2 December @6.30pm - Workshop on Contentment and Clarity at Whitianga Yoga Studio
- 10 December @10am - Lama Tsongkhapa Day Guru Puja
- 13 December @10.30am - Interfaith Celebration with Free Community Lunch
- 1-3 January - New Year Resolution & Last Year Purification Days - Join one session, one day, or all sessions.
- 8-15 January - Silent Meditation Retreat
- 22-29 January - Stages of Meditation Retreat

For info about events and courses, contact [spc@mahamudra.org.nz](mailto:spc@mahamudra.org.nz) or 07 866 6851



Coromandel  
Community Acupuncture



Opening on 3rd February 2021 Every Wednesday and Thursday

9am to 3pm 45 Tiki Road, Coromandel Town

Christina Wu, ACC registered acupuncturist, Bachelor of Health Science (Acupuncture & Chinese Medicine), Taichi teacher, brings her caring and holistic approach to serve the Coromandel community.

Phone: 07 866 6663/ 021 113 4768 or 07 866 8358 (Wed. & Thu.)

Email: [christinawu121@gmail.com](mailto:christinawu121@gmail.com)

Please visit [www.corocommunityacupuncture.co.nz](http://www.corocommunityacupuncture.co.nz) for opening specials





# COLVILLE STORE NEWS



Opening hours: Sat -Thurs 8.30am - 5pm  
Fri - 8.30 - 6pm

Ph 07 866 6805  
colvillegeneralstore@gmail.com

From December 4th we will be opening Friday evenings until 6pm.

We have new casual staff to help us over the busy Christmas and New Year, please be patient as we train these new members of staff.

Many thanks for your continuing support.

## Community Policing Colville Community Meeting



Tuesday 23 February 1 - 3pm,  
Colville Hall,  
2310 Colville Road



*Themes for the meeting:*

- Meet the NZ Police staff of the Northern Coromandel area
- Information on how to get help
- General question and answer session from the floor.

Because the Police are on call, if an emergency arises they may have to cancel on the day. So we can let you know if the event is postponed, please register with CSSC: email [cssc@colville.org.nz](mailto:cssc@colville.org.nz), or call (07) 8666920 or text 021 057 2176. We will also confirm whether the event is going ahead on our facebook page and website.

Deepest sympathy and condolences go out to the family and friends of



**Nathan Strongman**

born 27 July 1971 Passed away 26 November 2020

May he rest in peace



*Youth Sailing Academy T shirts for sale*

\$25 each contact Spike 022 604 7975



## MEG AGM

The MEG AGM will take place in the Colville Hall on Saturday 28th November 2020. The meeting will start at 10:30 am and be followed by light refreshments.

If you'd like to hear what MEG has achieved in the past year and would maybe like to join the committee, then please come along. Everyone welcome!

Join the MEG Team!

We are looking for someone to join our team of field rangers. The ideal candidate will have experience in the bush cutting tracks and installing trap and bait station infrastructure, ideally will be chainsaw certified and have current first aid training. The work is physically challenging so a good level of fitness and ability to work off track in the bush is required. The position will be 4 – 5 days per week depending on successful candidate.

If you are keen to get involved and help us support our native species, please apply in writing to [info@meg.org.nz](mailto:info@meg.org.nz)

MEG Stoat Trapping Operation Data October 2020.

Predator & pest catch data from our entire stoat trapping operation for October 2020.

Species	Oct 2020	Total to Date
Hedgehog	4	394
Possum	0	83
Rabbit	6	119
Rat	230	19,301
Stoat	19	2,609
Weasel	8	972
Ferret	0	6

## Weed of the Month – Moth Plant

Moth Plant is a rampant evergreen vine with similar shaped fruit as the Choko. Clusters of 2-4 bell-shaped white flowers (20-25 mm diameter), occasionally with pink streaks, appear from December to May, followed by the leathery pear shaped fruit pods. The fruit pods contain a kapok-like pulp, which split open to disperse many black, thistledown-like seeds. Transported easily on the wind, the seeds can germinate long distances from the seed source and the resulting vine smothers and kills plants up into the canopy, preventing the establishment of native plant species.

Its milky sap is poisonous and causes dermatitis, so it's best to cover up when dealing with this pest plant. When eradicating this plant, destroy the seed pods first to minimise seeding.

Check out the [weedbusters.org.nz](http://weedbusters.org.nz) site for more information on how to eradicate Moth Plant from your property.

Have a great season everyone! Contact us at [info@meg.org.nz](mailto:info@meg.org.nz) or make a donation by visiting our website [www.meg.org.nz](http://www.meg.org.nz)

# David Wright Wright Contracting Services

General and Heavy Engineering including:

- Welding
- Machining / Fabrication
- Hydraulics
- Machinery Repair / Maintenance

No job too big or small!

Onsite or at my Colville workshop

Phone: (021) 100 2767

Email: dewwrightnz@gmail.com



## What can I do to conserve water?

There are a number of simple ways in which we can reduce water around the house while enjoying what the Coromandel has to offer Indoors



- Fill the sink to wash vegetables and rinse dishes.
- Turn the tap off while you are brushing your teeth.
- Only use your dishwasher and washing machine when you have a full load.
- Promote shorter showers and shallower baths
- Use a bowl to scrub vegetables in the kitchen sink. You can pour the water on your plants.
- Keep water in a covered jug in the fridge. It saves running the tap to get cold

## *Looking for a Midwife?*

I'm an experienced midwife who loves living in the beautiful northern Coromandel. I provide community primary midwifery care and cover the upper and western side of the peninsula from Port Jackson to Manaia, including Colville & Coromandel Town.

**Sheryl Wright**  
Moehau Midwives  
Phone (022) 500 1310  
www.birth.net.nz  
moehau.midwives@gmail.com



Northern Coro Rubbish  
Collections for

**FEBRUARY**

Tues 2



Tues 9



Tues 16



Tues 23



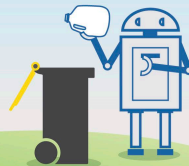
tcdc\_noreply@cmail.com

**KERBSIDE PLASTIC RECYCLING CHANGE**

**LOOK FOR THE NUMBER**



Only plastics 1 & 2  
will be collected  
for recycling



**RECYCLING REMINDER**

*TCDC no longer collect plastic types 3 - 7.*

*ONLY plastic types 1&2, tins,  
paper & cardboard go in the green  
wheelie bins. Bear this in mind when you  
are shopping.*

**Coro Refuse & Recycling  
Centre.**

Tuesdays & Thursdays  
11 - 4.30  
Saturdays & Sundays  
11 - 5.30

**Goldmine shop open**

525 Hauraki Rd, Coromandel.  
**07 866 7616**

Handling rubbish, including recyclable  
items, illegally dumped at the gates of our  
Refuse Transfer Stations (RTS) outside of  
hours, incurs a cost for all our district  
ratepayers that contributes to driving up  
the annual rates bill.



**CORO MARKET**



Now **OPEN EVERY FRIDAY**

Beautiful, fresh, veggies,  
tasty snacks & homegrown  
produce. On grass beside BNZ  
8.30am - 12.30pm

Any enquiries or bookings ph.  
Sabine 07 866 8932

FARM SHOP  
COLVILLE VILLAGE



*With the festive season fast approaching we have something for everyone from Christmas cakes, gift packs & vouchers, and local arts and crafts. Or just pop in to treat yourself.*

**We will be open every day over summer**

**100% HEREFORD BEEF BURGERS \* HOT CHIPS \* COFFEE \* BAKING \*  
PICKES 'N' JAMS \* LOCAL ART \* REAL FRUIT ICECREAM \* MEAT**

**100% HEREFORD BEEF BURGERS \* HOT CHIPS \* COFFEE \* BAKING \*  
PICKES 'N' JAMS \* LOCAL ART \* REAL FRUIT ICECREAM \* MEAT**



**\* Yes we are open for business \***

Winter opening hours are as follows

**CAFÉ—Wednesday to Sunday 10am—5pm**

**RESTAURANT—Wednesday to Sunday with bookings only**

**If the government permits us**

Our next Darts will be held on Saturday 7th June at 5-30pm

**CLOSED = MONDAY & TUESDAY**

Relax & Revive Coromandel

[www.relaxcoro.co.nz](http://www.relaxcoro.co.nz)

Certified Massage Therapist  
Relaxation Massage

**Jan is working from the tranquil surrounds  
of the Tangiario Kiwi Retreat, Port Charles**

By appointment  
Email: [info@relaxcoro.co.nz](mailto:info@relaxcoro.co.nz)  
Ph 021 268 6198



## Solville Bay Pre-School

Wishing you all a safe and happy holiday  
We look forward to seeing you in 2021!  
Our first term will start on Tuesday 2nd of February.  
We welcome new enrolments. Come and meet us.

Our operating hours are:  
Tuesday to Friday 9am to 3pm during School terms.  
20 Free ECE hours for 3 years and over. WINZ subsidies  
available.

Best wishes from the team.  
Phone - 07 8668 319      Email - [cbpreschool@xtra.co.nz](mailto:cbpreschool@xtra.co.nz)



## The Forager's kitchen

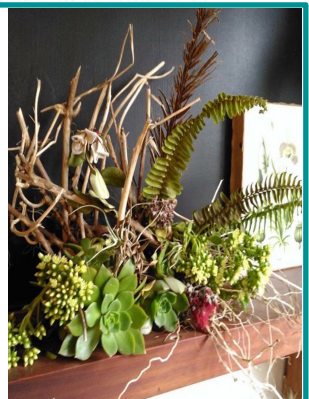
2314 Colville Road, Colville  
Closed Mondays  
[theforagekitchen@gmail.com](mailto:theforagekitchen@gmail.com)

### LIVE MUSIC

Most Friday nights -  
checkout the line up and  
details on the Forager's  
Kitchen facebook page



027 3666 986  
021 186 3631





**COLVILLE LAWNS  
PROPERTY  
MAINTENANCE**

Seamus

021 0264 1000



**D & K  
HOME IMPROVEMENT  
HANDYMAN**

Ph. David Porter 027 224 8925

email: davidkim@colville.org.nz



Bryan: 021 799 056

[www.gardentools.nz](http://www.gardentools.nz)



Joanna: 021 739 398

**LIFETIME GUARANTEES**



**White Star Honey**

Producing Local Delectable Honey

Available from Colville General Store, Coromandel Meat Keeper or direct at White Star Station / Colville Farm Holidays. Contact Tellic 021 770 382 or email [wshoneynz@gmail.com](mailto:wshoneynz@gmail.com)

**Self Service Coin Operated  
Washing Machine and Dryer  
OPEN 7 days**

Available at White Star Station / Colville Farm Holidays 2140 Colville Road, Colville Coromandel (2 minute's drive, 1.7km South of the Colville General Store towards Coromandel Town)

Follow the signs at the front Gate.

\$4 per wash \$4 for 45 minutes approx drying time.

Takes \$1 and \$2 coins.





## WHAT'S ON IN THE NORTHERN COROMANDEL

Regular events	
Enliven -	every Thursday 10 am
Yoga -	every Tuesday Colville Hall 10am
Sunset Yoga	every Thursday in term times With Vanessa @ Colville School Hall. 5 - 6.15pm
Daily Meditation	Free @Mahamudra Centre 8:30am - 9am (guided)
Friday nights	Forager's Kitchen. Live music early evenings 5.30 On.....

### February dates

Tuesday 2	Colville Early Learning Centre opens
Tues 16	Deadline for February Panui
Sat 20	CLAIM AGM @ Colville Hall 2pm
Tues 23	Colville Community Meeting @ Colville Hall meet the Police 1-3pm

### Important numbers

111	Fire, ambulance, police emergencies needing immediate assistance
105	Police - for reporting incidents not requiring an immediate response
0800 CRIMESTOPPER	For reporting crime (anonymous)
0800 611 116	For medical advice or information 24/7
0800 787 797	Alcohol Drug Line 24/7
0508 828 865	Suicide Crisis Helpline
0800 543 354	Lifeline
0800 111 757	Depression Helpline: free text 4202
0800 688 5463	Outline
0800 376 633	Youthline
0800 764 766	National Poison Centre
07 8666 920	Colville Social Service Collective
07 8666 618	Colville Community Health Centre
07 8666 615	Colville School
07 8666 805	Colville General Store
07 8668 319	Colville Bay pre school
07 866 8702	Coromandel Pharmacy M-F 8.30am-5pm; Sat 9am-1pm