

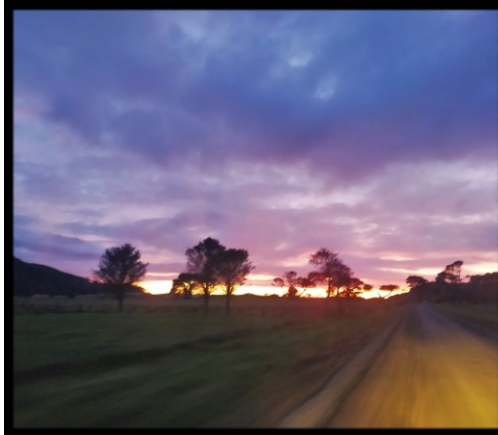
July 2022 - N° 18 - *Newsletter for the Northern Coromandel*



- www.colvillejunction.co.nz -

PĀNUI

Celebrating Matariki & practicing for the Bake Sale!



The Colville School children are busy getting ready for their “*Garden to Table Bake Sale*” on **Friday 8th of July**, for afternoon tea from 1-3pm, please come and support their hard work!

Also, thank you to Esther for sharing with us those beautiful photos taken on Matariki day.

Editor

Kia Ora,

Happy Matariki to you all!

Winter might be here with its coldness and darkness, but that's a promising start with all the heart-warming events which are coming up in the next few weeks! Let's get social!

Marine

Guidelines for contributions

Contributions welcome, but may not always be used. We may also edit them for clarity and space.

Email your news, notices, advertisements, jokes, recipes, dreams & handy hints.

Please send in Word or Open Office (not PDF's).

Or post or drop contributions into Colville Junction.

Deadline for the next month Wedn 20th July

For an electronic copy (which comes in colour), email: panui@colvillejunction.co.nz with 'subscription' in the subject line.

For a mail copy: email/phone us. Subscription cost for printed copies is \$25.00 per annum.

Contact Information

Phone: 07 8666 920

Email: info@colvillejunction.co.nz

2311 Colville Road, RD4,

Coromandel 3584

www.cssc.net.nz

Hours:

Tues, Wed, Fri 10am - 3pm

Closed for lunch 12.30 - 1pm

Closed Mon & Thurs

Manager - Larisa Webb

manager@colvillejunction.co.nz

021 258 8037

Manager's Assistant - Anne Mountjoy

assistant@colvillejunction.co.nz

Financial Administrator

Nicole McCauley

finance@colvillejunction.co.nz

Colville Harbour Care Nursery

Sassy Acorn

nursery@colvillejunction.co.nz

028 436 0193

Youth Group

Danielle Van Resseghem

& Nathan McCauley

colvilleyouthgroup@gmail.com

Pānui editor - Marine Baillard

panui@colvillejunction.co.nz

Community Development Worker

Maria Dove

youth@colvillejunction.co.nz

Moehau ki te Moana Coordinator

& Grant Writer - Cassidy Connor

cass@colvillejunction.co.nz

Moehau ki te Moana Coordinator

Vanessa Edelsten

vanessa@colvillejunction.co.nz

If you would like to support Colville Junction,
you can donate online:
38 9009 0798558 00
(and put 'donation' in the reference field)
or contact Larisa
manager@colvillejunction.co.nz

Colville Junction would like to thank our funders and supporters :

Main Funders

Funders

Colville Junction Supporters

Anchor	Resene	COMMUNITY WAIKATO
The Colville Store	White Star Honey	"Thinking Communities"
Daltons	Woodland's Honey	Team Whānau
The Forager's Kitchen	Coromandel Four Square	
Hereford 'n' a Pickle		
Lothlorien		

Bar fridge

Does anyone have a bar fridge no longer needed that they would be happy to donate or sell to us? Our one is nearing the end...

Please contact us if you do Ph. 8666 920, email info@colvillejunction.co.nz.

VACANCY: Pānui Editor

Colville Junction (CJ) has an exciting opportunity for someone to **develop and prepare the community newsletter** – the Pānui. This role is suited to someone who enjoys **engaging with the community** and is **confident with IT**.

This is a part-time contract role. For more information, and a copy of the job description, please contact the Colville Junction Manager, Larisa Webb, on manager@colvillejunction.co.nz or phone 021 258 8037.

Applications close 5pm, 29 July 2022.



Youth Group will be happening in Term 3
Look out for activity notice through the school!



Here to help u

There is help available if you finding it challenging after Covid. You can contact Here to Help u <https://heretohelpu.nz/> or phone: 0800 568 273. As they say: It's quick. It's convenient. It's help made easy...no judgement, no barriers, and no unnecessary complexity. People who have accessed it have been impressed with the quality of support available, including food parcels, collection services etc. Alternatively you can contact us at Colville Junction and we can arrange a referral.

Got a story? A photograph? A recipe? Some hints and tips you'd like to share with our community?

Send us a email at panui@colville.co.nz !

Rapid Antigen Tests (RATS) are available for free in Colville from the Colville Fire Station Wednesdays 11am – 1pm weekly. To get these test kits for free you must register on the Request Rats site <https://requestrats.covid19.health.nz/>



COLVILLE
COMMUNITY HEALTH TRUST

Hello everyone,

We are currently looking for new Trustees, so I thought I would tell you all why I think this is important.

I became a trustee in 2013 because I feel what the Health Trust does - supporting the Colville Health Centre with infrastructure and equipment - is vital to our community. Being a Trustee means I am able to help with fundraising and contribute ideas and opinions to help the Trust fulfill its mission of supporting health services here in Colville. Without our volunteer Trustees, this could not happen. We need you.

Nicole Brighthouse

And did you know...?

One of the many ways the Health Trust helps Colville residents have access to health services is by providing low-cost space for visiting practitioners to meet with clients. These services are all available here, if enough people make appointments. You do not have to be registered with the clinic to consult with any of these alternative health practitioners, you can call them directly for an appointment.

- » **Acupuncture:** *Christina Wu*, 021 113 4768
- » **Acupuncture:** *Daniel Judd*, 022 070 5081
- » **Homeopathy:** *Dianne Hayes*, 022 672 7938
- » **Mirimiri, Romiromi & Whare Tangata Ora:** *Ikēna Tai Manawa*, 022 387 8568
- » **Shiatsu & Reflexology:** *Lassara Hall*, 027 375 7190
- » **Contact Care – Flinchlock Release:** *Lisa Gruythuysen*, 027 403 8026

Colville Community Health Trust

Annual General Meeting

30 September, 12pm

War Memorial Hall, Colville

All Welcome

We are seeking new community trustees who have passion and creativity, at this exciting time for health services in our area.

Please contact Emily for more information. 07-866-6618 /

colvilletrustmanager@gmail.com

Applications close 30 July



MEG Winter Lecture Series

The popular MEG Winter Lecture series is back in July! Come along to the Peppertree Restaurant on several Sunday evenings throughout Winter and hear from yet another great line up of experts. This years speakers include Ian Stringer who received an order of merit in the recent Queens Birthday honours for his work saving the Mercury Island tusked weta, Professor Bruce Clarkson an ecologist from Waikato University, Lee Hill from Kauri Rescue, and Dr Brendan Dunphy an expert in Seabirds from the University of Auckland. *See the advert in this edition of the Pānui for more info on dates and times.*

Let's hear it for our volunteers

June 19-25th was Te Wiki Tūao ā-Motu - National Volunteer Week, which celebrates all those who do 'Mahi aroha, doing work for love' around Aotearoa.

MEG's mahi is largely driven by countless hours of voluntary work by a large group of dedicated volunteers. Their contribution to conservation in the rohe whether clearing trap lines, taking part in weeding events or clean ups, building traps, sharing & connecting with the community or even being part of the MEG committee are all fundamental to our goal of protecting the

native wildlife in the rohe. Heartfelt thanks to all of the volunteers whose mahi aroha for MEG and many other worthy organisations is appreciated beyond words.

One of our very special MEG volunteers is Mike George. He is the superstar behind every trap that is built from the MEG workshop, repairing and replacing broken parts and generally keeping our traps in tip



Mike George making and repairing traps!

top shape (and there is a lot!)

At last count, he had built over 1500 trap boxes and he is always the first to put his hand up to share his knowledge at trap making sessions with local schools.

Thanks Mike for your mahi!

Have a great month everyone!

The MEG Team

See www.meg.org.nz.

Kia ora Colville,

Hope this finds you warm and well. The Colville General Store has been running since 1978 and this would not be possible without the endless support of our community so we would like to start this month's entry with saying 'THANK YOU'. Uniquely community owned and community run for the benefit of our community- which is pretty awesome!

We are actively looking for more committee of management members (COM) to join our wonderful team. *If interested, contact Steve Carson 021711489 or Joanna Pearsall 021739398.*

As well, the front of the shop is getting a 'spruce up'. We would love any helpers wanting to pick up a paint brush.

Bye for now
From the COM team



Mahamudra Centre
for Universal Unity
2183 Colville Road
Ph 07 8666851
www.mahamudra.org.nz



Upcoming events

Retreats

Mahamudra Retreat

How to discover your true nature:
with Venerable Robina

Venerable Robina Courtin is an incomparable teacher who offers direct, honest and bold Buddhist teachings. This retreat is going to be exceptional!

6 -14 August

Spring Refresh Women's Retreat with Wild Stillness Retreats

September 2-4

Getting comfortable with uncertainty and change. Silent meditation & Qi Gong retreat.

16 - 18 September

**“The sun of real happiness shines in your life when you start to cherish others;”
- Lama Zopa .**

Position: Teacher for a Multi-Level Class at Colville School

This is an exciting opportunity to have an enviable lifestyle and to teach highly engaged students within a supportive community. Colville is a well resourced school in a stunning rural setting.

At Colville School **we strive for everyone to have the highest quality of learning experiences.** We provide an environment that encourages independent users and seekers of knowledge. Our local curriculum is designed to grow a strong connection to our local environment, fostering a positive outlook to be motivated, life-long learners. We are a Garden to Table and PB4L School.

The Colville staff are a committed and collaborative team. The successful candidate would have the **opportunity to grow their leadership skills** and curriculum expertise through ongoing professional development and curriculum leadership initiatives. **If you are a skilled practitioner with a passion for learning and love for our beautiful whenua, then you could be the candidate we are looking for.**

The terms and conditions for this position is set by the [Primary Teachers' Collective Agreement](#). The base salary for trained and registered teachers will be dependent on the applicant's qualifications and experience. Individual's actual base salary will be established by a salary assessment once the role is confirmed.

Please contact the School Principal to find out more about our special little school and request an application pack- principal@colville.school.nz tel-07 866 6815 mob-021 091 20434.

Applications Close Friday 5th August, 4pm

The role will start in Term 3 2022 or by negotiation. School visits are warmly welcome. The position qualifies for SIA and isolation allowances. A school house is available to rent and contribution to relocation costs may also be available.

Ako, to teach and to learn

This year Matariki will be marked as a Public Holiday on Friday 24th of June. Matariki signals the start of the Māori New Year. Matariki holds many meanings in Aotearoa New Zealand. It is a time for whānau to come together to reflect on the past, and prepare for the year ahead. Matariki is a time that resonates strongly with Garden to Table's kaupapa of growing, harvesting, preparing and sharing great kai. It's the perfect time to share bounty with

non-fiction section. If you have any books that you love and think should be on the shelves at Colville School, please let us know!

Susie Sumner
Principal, Colville School



loved ones, and plan for the coming growing season.

Ā Mātou Kōrero, Our Story

Sharing and growing a love of learning is an important part of what we do at Colville School. Come and check out the library in our community HUB and check out the graphic novel display from TCDC. Watch out for an upcoming fundraiser to update the

COME AND SUPPORT

Our Garden to Table

Bake Sale

Raising funds for our school's Garden to Table Programme

Date, Time and location in the text below, see you there!



SUPPORTED BY:



Are you ready for delicious cakes, yummy treats... and entertainment?

Students are getting ready for their first Bake Sale to raise funds for the Garden to Table Programme. All term we will be flexing our baking muscles and refining our recipes for the day. Everyone is warmly invited to join us at the Foragers Cafe on Friday 8th of July for afternoon tea from 1-3pm. It will be a wonderful celebration of the student's learning and a community get together. This time the kids are running the show!

The Colville Project



TCP Trust is looking for a volunteer to help to set up, organise, manage and coordinate advisory groups. This enthusiastic person would help the Admin person (Anne Mountjoy) to establish the purpose of groups, recruit members, maintain a structure that works for everyone, and empower groups. An advisory group is a committee of people selected by the trust to provide defined advice and information in an informal and flexible manner. Advisory groups provide advice but do not make decisions and have no authority to govern. 3 types of advisory groups :

- » A. **User view** : Propose needs and aspirations;
- » B. **Technical view** : Propose solution on how to do/make the facilities;
- » C. **Project peripherals** : everything surrounding the project, communications.

The following list presents possible advisory group themes (not yet decided or exhaustive).

A. User view:

A1 Wellbeing center design/content A2 Architecture/ facilities design/ connections/ needs A3 Elder Housing A4 Youth facilities A5 Family housing A6 Housing research

B Technical view:

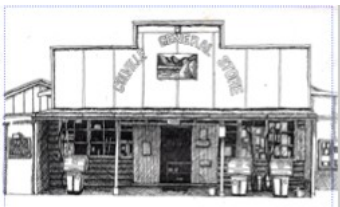
B1 Energy, Alternative Power B2 Waters B3 Air B4 Resources and Materials B5 Building Waste B6 Waste management B7 consideration of the climate - environmental crisis - global issues - emergency B8 Biodiversity B9 Well-being in and out of the facilities B10 Urban and social integration B11 Innovation & Artificial Intelligence B12 Nuisance and pollution B13 Cultural Heritage B14 Certification

C. Project peripherals/outskirts

C1 Funding C2 Fundraising C3 Event Management C4 Social Media & Marketing

Get in touch thecolvilleproject@gmail.com

The Colville Project Team



HELLO EVERYONE,

The first thing to say this month is a *heartfelt thank you* for your patience and understanding in difficult times. We know that prices are high, we feel your pain. Rising oil prices mean higher prices on everything and we are doing our best to keep prices low, while still bringing in the stock you want, and covering all the rising costs of doing business that we face. We want to ask that you all do your best to support us through this winter - if you can buy it here, please do. If you see that our prices are comparable to other shops, let your friends know. If you want to ensure that Colville always has 'the shop', please do what you can to help us through.

Second thing...**we are still looking for casual staff** - like everywhere else, we have sick days to cover, and staff who need to take holiday time they earned back in the crazy days of summer. If you can help out, ask the counter staff for a job description and expression of interest form. We would love to hear from you!

The Colville General Store Team



WINTER LECTURE SERIES 2022

3 JULY - CONSERVATION KŌRERO
WITH LOCAL GROUPS

31 JULY - BRUCE CLARKSON
*"BRINGING INDIGENOUS NATURE BACK
INTO NZ CITIES AND TOWNS"*

AUGUST 14 - IAN STRINGER
*"SAVING THE MERCURY ISLAND TUSKED
WĒTĀ"*

SEPTEMBER 25 - BRENDAN DUNPHY
*"SEABIRDS AS OCEAN INDICATORS OF
CHANGE"*

7 PM AT PEPPER TREE RESTAURANT COROMANDEL
FREE EVENTS BUT KOHA WELCOME



!!\ ROAD WORKS NOTICE /\!

Tuateawa shoulder repair work

7.00am to 7.30am - OPEN
7.30am to 11.30am - CLOSED
11.30am to 12.00pm - OPEN
12.00pm to 4.15pm - CLOSED
4.15pm to 7.00am - OPEN

These times allow the school bus to get through and emergency vehicles will be given priority, however access will be restricted for heavy vehicles.

COLVILLE BAY PRE-SCHOOL

Charity Inc.



Open Tuesday to Friday 8.45am to 3pm
during School terms and for term breaks 2022

Te Whare ako o te Uumangawhaa o
Nga Waka.



Kia Ora, Kia Orana, Bonjour, Hei, Hello
"I believe in nurture in nature, seeing the environment as the 'third teacher'. What better place to practice this kaupapa than in Colville Bay." (Kaiako Belinda reflecting on our shared vision of early childhood education in te whare ako o te Uumangawhaa.)

Transport from Coromandel and return
Tues, Weds, Friday. For 3+ years old!

Welcome to call or email us to arrange a visit or
for more information.

**Early childhood Education and Care for
0-6 year old's.**

**20 hours Free ECE for 3 years and over.
WINZ subsidies available.**

2391 Colville Road, Colville
(Behind Colville School)
Ph 022 645 3272

www.colvillebaypreschool.co.nz

Upcoming events

Matariki gathering on **Wednesday 6th July** ask your Pre-Schoolers for more information/ an invitation.

Cake stall fundraiser for Colville Pre-school at The forager's **Saturday 9th July**: there will be dinner and music for your nourishment and entertainment & please let us know if you'd like to donate a cake in advance.

Daniel Judd

Natural Health Provider
Global Balance Acupuncture
NZ Registered and Traditionally Trained

Community Services and
Super Gold Card accepted
Good Bloke rates available

Phone **0220 7050 81**

Tuesday and Friday by appointment at the Colville Community Health Centre

Using Distal points to achieve Instant Results.

"Tapping into the Medicine Cabinet within"

Also available Mirimiri, Romiromi,
Cupping, Heat Therapy,
Chinese Herbal Medicine,
TaiJiQuan Exercise Therapy,
TCM full diagnosis.

COLVILLE COMMUNITY HEALTH CENTRE



2299 Colville Rd, RD 4, Coromandel 3584
Phone 07 8666618. Fax 07 8666619 Text number for the clinic is 4448

Mon, Tues & Thurs 9am – 5pm/ Wed 10am - 5pm/ Fri 9am - 4pm

For the after hours service, phone the clinic number 07 866-6618.
The On Call person will be paged by the after hours service.

Please remember - If it's an emergency, dial 111



Hi everyone,

Thank you to our community again for your support and to all those who have made payments or set up an AP to clear your account. Even a small weekly amount makes a difference and if everyone with an outstanding account set up a small AP, it would make a big difference to us.

There are currently significant changes happening with the New Zealand health system and we are doing our best to navigate these changes so they do not impact our community. We are grateful to all of you who continue to support us during these times.

We ask that you give our team plenty of notice when you need a new prescription. Sometimes we are not able to fulfil your prescription request when you need it in an emergency. If this happens, you can call the

pharmacy who can give you a 3 day supply of your regular medications until your request has been fulfilled at the clinic.

Due to the multiple avenues in which we now receive prescription requests, we ask that you telephone the pharmacy regarding the collection of your medicines or if you wish for them to be posted to you.

We have recently received some great feedback regarding our clinical staff which reminds us to say that we welcome ALL feedback, whether it great or not so great. This helps us reflect on the service we provide to our community.

Some of our fees have recently changed. Please check with the clinic at the time of booking what the appointment will cost.

Wishing you cosy days through July,
The team

SATURDAY JULY 23 FROM 4PM
• THE FORAGER'S •

PIZZA + YOU
(X MUSIC)
=
BOOKS!

ALL PROFITS GO TOWARDS BUYING NEW BOOKS FOR THE COLVILLE SCHOOL LIBRARY.
CONTACT SPIKE (022 604 7975) IF YOU WOULD LIKE TO HELP, OR TO DONATE A BOOK FROM THE WISHLIST.
SEE YOU THERE!

Northern Coro Rubbish collection for July

Tues 5 July



Tues 12 July



Tues 19 July



Tues 26 July



Coro Refuse & Recycling Centre

Goldmine Shop

Wednesday & Friday 9.30am - 3pm
Saturday & Sunday 9.30am - 4pm

525 Hauraki Rd, Coromandel
07 866 7616

Handling rubbish, including recyclable items, illegally dumped at the gates of our Refuse Transfer Station (RTS) outside of hours incurs a cost for all our district ratepayers that contributes to driving up the annual rates bill.



Buckets of Bush Blend honey available.
Harvested from Port Jackson 2022
14kgs Approximately \$95
Please contact Tellic on 021770382

Self Service Coin Operated Washing Machine and Dryer

OPEN 7 days 7.30am – 8pm

Available at White Star Station / Colville Farm
Holidays 2140 Colville Road, Colville
Coromandel

(2 min drive, 1.7km South of the Colville General Store towards Coromandel Town)

Follow the signs at the front Gate.

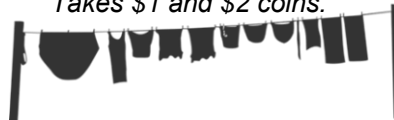
\$4 Cold/ Cool wash

\$5 Warm wash

\$6 HOT wash

\$6 for 45mintues approx. drying time.

Takes \$1 and \$2 coins.



Jo & Bryan provide high quality tools from around the world to support gardening with efficient hand tools.



Ph 021 739 398
www.gardentools.nz

COLVILLE STORE



Ph 07 866 6805

colvillegeneralstore@gmail.com

Our opening hours :
Monday to Saturday 8.30am to 5pm
Sunday 10am to 4pm

Thank you for following the rules and wearing a mask and scanning or signing in.

We are still looking for casual staff to join our busy team.

The Colville Store team



David Wright

Wright Contracting Services

General & Heavy Engineering including:

- Welding
- Machining/ Fabrication
- Hydraulics
- Machinery Repair/ Maintenance

No job too big or small!

Onsite or at my Colville workshop

Phone: 021 100 2767

Email: dewwrightnz@gmail.com



Looking for a Midwife?

I'm an experienced midwife who loves living in the beautiful northern Coromandel. I provide community primary midwifery care and cover the upper and western side of the peninsula from Port Jackson to Manaia, including Colville & Coromandel Town.

Sheryl Wright

Moehau Midwives

Phone 022 500 1310

moehau.midwives@gmail.com

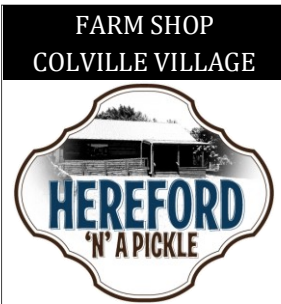
www.birth.net.nz



Jo & Bryan provide high quality tools from around the world to support gardening with efficient hand tools.



Ph 021 739 398
www.gardentools.nz



JULY – Closed Mondays

We'll be open from 9am to 3pm this month.
Pop in for your hot coffee and scone, lunch, or to pick up some Hereford beef for dinner.
Lots of great options to warm you up on these cooler days.
A heater too, to keep you warm in our little room.
Phone orders are welcome too

100% HEREFORD BEEF BURGERS * HOT CHIPS * COFFEE * BAKING *
PICKLES 'N' JAMS * LOCAL ART * REAL FRUIT ICECREAM * MEAT

2318 Colville Road, RD4 COROMANDEL 3584
herefordnapickle@gmail.com Cathy Ward 07 866 6937
www.kairaumati polled herefords.com



Christina Wu
BHSc (Acupuncture & Chinese Medicine)
ACC registered acupuncturist
Chinese Medicine practitioner
Taichi teacher

*“ Winter specials: For non-ACC patients,
\$40 for 40 minutes for pains and aches, valid till the end of July.”*

16 Victoria Street, Coromandel (Tuesday to Friday)
Colville Community Health Centre (Monday)

Phone: **021 1134 768** Email: christinawu121@gmail.com
www.corocommunityacupuncture.co.nz

WAIKAWAU BAY



TREE SERVICES

Professional and qualified arborist services

Tree removal and pruning

Call for a free, no obligation, quote

Surya 0225670252



1299 Port Charles Road,
Coromandel
07 866 6614



Info@kiwiretreat.co.nz
www.kiwiretreat.com

Accommodation open 7 days

Café & Bar is open from 10am to 5pm, Wednesday to Sunday

Closed Mondays & Tuesdays

Restaurant open with bookings only

David's Handyman & House Painting Services



Before



After

Interior & Exterior House Painting

Rot & Gib Repair

Water Blasting or Soft Wash

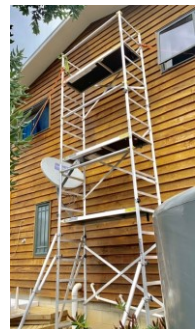
Deck Repairs & Staining

And much more...

Free Quotes

Contact David Porter Ph: 027 224 8925

email: davidkim@colville.org.nz



What's on in the Northern Coromandel?

Events might be cancelled or postponed due to Covid

Regular events

- Mondays** Tai Chi with Christina Wu @ Colville Hall, contact: 0211134768
Tuesdays Yoga with Kate @ Colville Hall - 10am **YOGA IS BACK!**
Aikido for kids @ Colville Hall - 3.15 - 4.15pm - **ON HOLD** -
Thursdays Enliven (Social Programme for Older People) - 10am

July

- Weds 6 Matariki Gathering
Fri 8 Garden to Table Bake Sale @ The Forager's - 1 to 3pm
Sat 9 Cake stall fundraiser for Colville Pre-school @ The Forager's
Mon 11 Colville Hall AGM @ The Colville Hall all welcome - 7pm
Sat 23 Fundraiser for School Library @ The Forager's - from 4pm
MEG Winter Lecture Series 2022 - See page 9

Later on this year

- 5 Aug Teacher for a Multi-Level Class - applications close 4pm
4 - 14 August Mahamudra Retreat with Venerable Robina @ Mahamudra Centre
2 - 4 Sept Spring Refresh Women's Retreat @ Mahamudra Centre
Labour Wknd Colville Easter Festival: Colville Sings Swing!

IMPORTANT NUMBERS

- 111 Fire ambulance, police emergencies needing immediate assistance
105 Police for reporting incidents not requiring immediate response
0800 CRIMESTOPPERS for reporting crime (*anonymous*)
0800 611116 for medical advice or information 24/7
0800 044 334 National Sexual Harm Helpline (Text 4334)
0508 326 459 Sexual Harm - Child/Tamariki at risk
0508 828 865 Suicide Crisis Helpline
0800 543 354 Lifeline (*Whatever the issue, here to listen*)
0800 111 757 Depression Helpline: free text 4202
0800 688 5463 Outline (*all-ages rainbow mental health organisation support line*)
0800 376 633 Youthline (*free counselling services for young people*)
0800 764 766 National Poison Centre
07 8666618 Colville Community Health Centre
07 8666 815 Colville School
07 8666805 Colville General Store
022 645 3272 Colville Bay pre school (replacing previous landline)
07 866 8702 Coro pharmacy M - F 8.30am - 5pm; Sat 9am - 1pm

ALCOHOLIC DRUG HELPLINE

Free & Confidential 9am to 10pm everyday **0800 787 797**
Open friendly meeting. Anonymity assured, please phone **021 314 467**