



PĀNUI

- www.colvillejunction.co.nz -



◆◆◆◆◆ **Kia Ora everyone,** ◆◆◆◆◆

We are delighted to reveal our new logo! A huge thank you to the talented Ra-Tane Edelsten for creating the logo. He prepared two options – we loved both but choose this one as we felt it more clearly demonstrated who we are (the other was a gorgeous green raranga image of the interconnection).

This image draws from the shape of the nautilus shell.

We hope to have new signs on the gate soon!

The Colville Junction Team

Editor

Kia Ora,

Winter is slowly making its way towards us. Warm and cosy evenings next to the fire, enjoying a hot cuppa, are right at the corner, let's unwind and welcome them!

Take care,

Marine

Guidelines for contributions

Contributions welcome, but may not always be used. We may also edit them for clarity and space.

Email your news, notices, advertisements, jokes, recipes, dreams & handy hints.

Please send in Word or Open Office (not PDF's).

Or post or drop contributions into Colville Junction.

Deadline for the next month

Tues 21st June

For an electronic copy (which comes in colour), email: panui@colvillejunction.co.nz with 'subscription' in the subject line.

For a mail copy: email/phone us. Subscription cost for printed copies is \$25.00 per annum.

Contact Information

Phone: 07 8666 920

Email: info@colvillejunction.co.nz

2311 Colville Road, RD4,

Coromandel 3584

www.cssc.net.nz

Hours:

Tues, Wed, Fri 10am - 3pm

Closed for lunch 12.30 - 1pm

Closed Mon & Thurs

Manager - Larisa Webb

manager@colvillejunction.co.nz

021 258 8037

Manager's Assistant - Anne Mountjoy

assistant@colvillejunction.co.nz

Financial Administrator

Nicole McCauley

finance@colvillejunction.co.nz

Colville Harbour Care Nursery

Sassy Acorn

nursery@colvillejunction.co.nz

028 436 0193

Youth Group

Danielle Van Resseghem

& Nathan McCauley

colvilleyouthgroup@gmail.com

Pānui editor - Marine Baillard

panui@colvillejunction.co.nz

Community Development Worker

Maria Dove

youth@colvillejunction.co.nz

Moehau ki te Moana Coordinator

& Grant Writer - Cassidy Connor

cass@colvillejunction.co.nz

Moehau ki te Moana Coordinator

Vanessa Edelsten

vanessa@colvillejunction.co.nz

If you would like to support Colville Junction,
you can donate online:
38 9009 0798558 00
(and put 'donation' in the reference field)
or contact Larisa
manager@colvillejunction.co.nz

Colville Junction would like to thank our funders and supporters :

Main Funders



Lottery Grants Board
FUNDS FOR YOUR COMMUNITY



Ministry for the **Environment**
Manatū Mo Te Taiao



ORANGA TAMARIKI
Ministry for Children

Funders



COGS
Community Organisation Grants Scheme



THAMES COROMANDEL DISTRICT COUNCIL



WWF



LEN REYNOLDS TRUST



MINISTRY OF SOCIAL DEVELOPMENT
Te Manatū Whakahoia Ora



Waikato REGIONAL COUNCIL
Te Kaitiaki o Waikato



Trust Waikato
TE PUNA O WAIKATO



The Tindall Foundation
contributing to a stronger New Zealand



Ruby



TREES THAT COUNT
TE HARI O TĀKE



SKYCITY



creative COMMUNITIES



D.V. BRYANT TRUST
Enhancing Human Welfare in the Waikato

Colville Junction Supporters

Anchor
The Colville Store
Daltons
The Forager's Kitchen
Hereford 'n' a Pickle
Lothlorien



COMMUNITY WAIKATO
"Being Connected"

Resene
White Star Honey
Woodland's Honey
Coromandel Four Square

Gym Bar 'feet' missing

We recently donated our gym bar to Colville School but the feet/weights are missing. If you've seen these/borrowed them can you please return to Colville Junction or drop off at the school? We had them tucked away to the right when you enter the gate to the Himalayan shop. Thank you :)



No youth group this term!

We look forward to starting up again next term. A huge thank you to Colville Sailing Club for their generosity in time, experience, and expertise. We all learned so much last term and grew expertise!

Dani

Moehau ki te Moana in collaboration with **Driving Creek Conservation Park** are running a **FREE workshop** on **June 22nd** 10-3pm to learn NIWA Stream Monitoring Assessment (SHMAK). The workshop will demonstrate how the stream monitoring kits are used and discuss the benefits of freshwater monitoring.

Lunch is provided. Places are limited. Please RSVP to cass@colvillejunction.co.nz



Here to help u

There is help available if you finding it challenging after Covid. You can contact Here to Help u <https://heretohelpu.nz/> or phone: 0800 568 273. As they say: It's quick. It's convenient. It's help made easy...no judgement, no barriers, and no unnecessary complexity. People who have accessed it have been impressed with the quality of support available, including food parcels, collection services etc. Alternatively you can contact us at Colville Junction and we can arrange a referral.

Got a story? A photograph? A recipe? Some hints and tips you'd like to share with our community?

Send us a email at panui@colville.co.nz !

Rapid Antigen Tests (RATS) are available for free in Colville from the Colville Fire Station Wednesdays 11am – 1pm weekly. To get these test kits for free you must register on the Request Rats site <https://requestrats.covid19.health.nz/>

You register - they send you an R- number to your phone - you come to the pick-up point with your R number, displayed on your phone - or have it on a piece of paper - we take a copy of the number and give you the required amount of kits. We give kits to enable each person in your household to have 3 tests each. So we need to know how many in your household and then we give you the appropriate number of test kits.

If you discover you are a close contact on a Thursday and require RATS tests urgently you can call Lena on 07 866 6687 and arrange to collect at a different time.

If you discover that you are positive please follow the guidelines and register that positive test. Also if you contact Here to help U (website) you will get lots of help i.e. groceries delivered to you while you are isolating, plus other helpful things. Drive in and stay in your car - we will come to the car and get your number and details.

Thanks all - and stay safe - it is still mowing people down and it isn't very nice - especially when the tiny unvaccinated children get it.

Lena Daze



COLVILLE
COMMUNITY HEALTH TRUST

Hello everyone,

We are still looking for new trustees. Trustees are responsible for governance, ensuring the Trust meets all legal obligations and operates in a financially responsible manner, so applicants with skills in these areas would be preferred. There is a trust meeting once a month, which trustees are expected to attend, either in person, or by zoom. If you are interested, contact Emily at colvilletrustmanager@gmail.com for an Expression of Interest form. Deadline for applications is 30 June, with successful candidates being appointed at the AGM in September.

In other news, a reminder that **The Great Colville Re-Fashion Show is scheduled for the 23rd of October.** We've joined up with the Colville Festival, for an even better attendee experience! We have roughly 30 people signed up as designers/models, so we expect it to be a really great show. Reminder posters will be appearing soon!

We put all the latest Health Trust news on our new **Facebook page**, and on our website, www.colvillecommunityhealthtrust.com, so be sure to check in frequently!

Emily



©MEG

Waikawau Childrens Forest planting day

This month we had the absolute pleasure of returning to the Children Forest at Waikawau Bay for a planting day with all the students from Colville School. 200 native trees were planted by the very enthusiastic kids with (only a little bit!) the support from parents, teachers and MEG volunteers. MEG and Colville school have been planting native trees there for almost 20 years and the area has begun its transformation into a regenerating native ngahere. Ka pai to everyone involved!

Moehau Environment Group was formed over two decades ago. Since the very early days, stoats have been one of the primary predators targeted by our trapping operation due to their relentless drive to hunt and kill and devastating impact on young kiwis.

The MEG stoat trapping operation has gone from strength to strength extending the existing trapping on Moehau down to Kapanga/Coromandel town and today we have a network of 1350 stoat traps, covering about 15000 ha. They are checked every month by volunteers or paid trappers. The project has been very successful in creating an area of low mustelid numbers which is key to allowing improved fledgling success for

kiwi primarily, however other native birds are also reaping the benefits including; kererū, tūī, tauhou, pīwakawaka, tomtit, and the korimako. We are excited to see the growth of many other groups with trapping programmes and locals doing backyard trapping, and overjoyed that the recent kiwi survey by DOC on Moehau shows kiwi are recovering thanks to all our mahi.

Recently we received a grant to help us scope out and set up areas of ferret trapping after we detected the arrival of the largest and potentially most deadly of all the mustelid species. Ferrets are a particular threat to kiwis in our rohe, however all ground dwelling species are at risk when ferrets are present, even native insects including weta, skinks and geckos aren't safe. Many thanks to the Mazda Foundation for helping us with this important project.

Heartfelt Thanks to Paul Denton

MEG wish to thank Paul Denton for many years of connection and contribution to our conservation mahi. Paul has been one of our trappers,

walking stoat lines and checking traps every month for over seven years. As a farmer, he lets us use the woolshed space (and donated kai) for wetland bird hui, conservation get-togethers, and stacked up the hay bales for our much loved Summer Holiday Programme movie nights. He provided a central bait collection location for all our trappers. Paul has moved on to new things and we wish him all the best and thank him for his community spirit, keenness for climbing hills, cheerfulness, and enthusiasm for conservation in the rohe.

Have a great month everyone!

Contact us at info@meg.org.nz or make a donation by visiting our website www.meg.org.nz



Mahamudra Centre
for Universal Unity
2183 Colville Road
Ph 07 8666851
www.mahamudra.org.nz



June and later events

Retreats

Qi Gong for Health, Vitality & Wellbeing

3-6 June

Winter soul soothe women's retreat

with Wild Stillness

23 - 26 June

Mahamudra Retreat
with Venerable Robina

4-14 August

Getting comfortable with uncertainty and change. Silent meditation & Qi Gong retreat.

16 - 18 September

Our Mahamudra Retreat this August will be a fantastic opportunity to receive teachings from the dynamic and powerful Venerable Robina.

“In Mahamudra meditation there is no doctrine, no theology, no philosophy, no God, no Buddha. We go beyond name, beyond shape and colour, beyond the relative, beyond self-image, beyond compassion.”

- Lama Yeshe.



©Marine Baillard

I thought I'd travel with you and share this photograph I took in the medieval village of *Belcastel*, located in the South of France, last week.

The village host a castle (hence the name) built 1000 years ago on a gigantic rock.

A real gold nugget for history lovers and wanderers.

Marine

Ā Mātou Kōrero, Our Story

It was a great privilege to share the **Colville's Garden to Table journey** with schools from around Waikato and the Auckland region. We received very positive feedback and have been invited to share our story at a national hui for rural schools. We felt incredibly proud to represent our amazing staff and students. Louise Waghorn, the North Island coordinator said " I would like to move to Colville and join in!"

Another reason for Colville to feel proud is that two of our students, Wint'r and Charlie, have won first prize in their age category for the Coromandel Library writing competition. *Check out the writing on our School Website at colville.school.nz.*



©Colville School

COME AND SUPPORT

Our Garden to Table Bake Sale

Raising funds for our
school's Garden to Table
Programme

Date, Time and location in the
text below, see you there!



SUPPORTED BY:

Westgold's

As a Positive Behaviour 4 learning School, we proudly celebrated Bullying -Free New Zealand Week. The year followed the theme "He kōtuinga mahi iti, he hua pai-ā rau": Small ripples create big waves. If you want to find out more visit the bullying free NZ website. We have been learning practical strategies to be an Upstander instead of a Bystander. We want Colville School to be a safe place for our everyone to feel safe and thrive.

Ngā mihi,

Susie Sumner, Principal Colville School

Are you ready for delicious cakes, yummy treats... and entertainment?

Colville School are getting ready for their first Bake Sale to raise funds for the Garden to Table Programme. All term we will be flexing our baking muscles and refining our recipes for the day. Everyone is warmly invited to join us at the Foragers Cafe on **Friday 8th of July** for afternoon tea from 1-3pm. It will be a wonderful celebration of the student's learning and a community get together. This time the kids are running the show!

The Colville Project

EOI & TENDER
ARCHITECTURAL/ENGINEERING
DESIGN SERVICES

Project:

The Colville Project Trust is seeking **Expressions Of Interest** (EOI) from qualified design professionals to provide Architectural/Engineering Services. Three teams will be selected. A tender will follow to select the organisation/team that will enter into negotiation with the Trust for the design of both The Colville Project's land management plan and Wellbeing and Education Centre. The tender consists of providing preliminary designs.

<https://www.thecolvilleproject.nz/tender>

The Wellbeing and Education Centre is defined by those areas :

- » 'Spaces' for health professionals
- » "Video conference"/media space, education learning/workshop spaces and office areas
- » A 'Community House' (multifunctional overnight sleep spaces, shared "Kitchen" and "laundry" areas)
- » A "Community Building" (Library, Opportunity shop, services...)
- » Other flexible accommodation units
- » Storage
- » Technical Zone
- » Possible Community Garden
- » Possible Nursery (CHC)

COLVILLE POSTAL SERVICES INC ANNUAL GENERAL MEETING

Will be held in the Colville public hall at

MONDAY 20TH JUNE 2022, 7pm

AGENDA:

- » Minutes of previous AGM
- » Financial Statement
- » General Business

All welcome!

Please come and support your local Post Service.



St John

Here for Life

St John Medical Alarms

Medical alarms help seniors and people with disabilities to continue enjoying their independence for longer. They also provide peace of mind and reassurance for family and friends. The medical alarms are monitored directly by St John, offering round the clock care and support.

St John medical alarms no obligation in-home visits provide valuable advice and support. They also provide a **free trial for up to 14 days**. If you decide that the medical alarm is not right for you, it can be returned at no cost, even if it's been used during the trial period to summon emergency help.

If this is something that you feel could benefit or would like more information:

Contact Christine Anderson, Telecare and Homehealth Representative for Hauraki-Coromandel: Email christine.anderson@stjohn.org.nz or call 0800502323.

Call St John on 0800 785 646 or visit www.stjohn.org.nz then select Medical Alarms. This will take you to the Medical Alarm page which has all the information about Medical Alarms. You may even qualify for funding from Work and Income through the disability allowance. This information can be found under the Medical Alarm Funding tab.

Ask your GP or Healthcare Provider.

Wendy Newman

!!\ ROAD WORKS NOTICE /\ !!

Tuateawa shoulder repair work

On **Monday 23 May** the road shoulder on Tuateawa Road, 500m south of the Little Bay Drive intersection, will begin to be repaired. This is estimated to take **six weeks** with rolling road closures from Monday to Friday, with the following times:

7.00am to 7.30am - OPEN
 7.30am to 11.30am - CLOSED
11.30am to 12.00pm - OPEN
 12.00pm to 4.15pm - CLOSED
4.15pm to 7.00am - OPEN

These times allow the school bus to get through and emergency vehicles will be given priority, however access will be restricted for heavy vehicles.

COLVILLE BAY PRE-SCHOOL

Charity Inc.



Open Tuesday to Friday 8.45am to 3pm
during School terms and for term breaks 2022

Te Whare ako o te Uumangawhaa o
Ngaa Waka.



Kia Ora, Kia Orana, Bonjour, Hei, Hello

Wednesdays we have our 'Parent-toddler group from 9.00 - 11am. We invite you to come for a play, a cuppa and korero and stay for shared morning tea with your little ones. 'Bush Kura' for our 4 year old's runs at the same time 9 -11.30 Wednesday where we

adventure out to the Ngahere or the foreshore.

Fridays: Waiata and music with Brandon. We are beginning to practice our Matariki songs and dance, looking forward to a celebration and remembrance event later in June.

We welcome one child from Coromandel and siblings from Fletcher's Bay, our newest tamariki to join us.

Also welcoming Belinda Williams to our teaching team. She has moved into the area from Coromandel and looks forward to getting to know our families and tamariki.

Transport for children from Coromandel and return Tues, Weds, Friday. For 3+ years old! Still 3 places available

Early childhood Education and Care for 0-6 year old's.

20 hours Free ECE for 3 years and over. WINZ subsidies available.

2391 Colville Road, Colville
(Behind Colville School)
Ph 022 645 3272

www.colvillebaypreschool.co.nz

AGM T.B.C: Nominees welcome for new Committee members.

Please enquire for role details. We also welcome you to join the Incorporated Society to support our Community Owned, Charity Registered ECE Centre.

Daniel Judd

Natural Health Provider
Global Balance Acupuncture
NZ Registered and Traditionally Trained

Community Services and
Super Gold Card accepted
Good Bloke rates available

Phone **0220 7050 81**

Tuesday and Friday by appointment at the Colville Community Health Centre

Using Distal points to achieve Instant Results.

"Tapping into the Medicine Cabinet within"

Also available Mirimiri, Romiromi,
Cupping, Heat Therapy,
Chinese Herbal Medicine,
TaiJiQuan Exercise Therapy,
TCM full diagnosis.

COLVILLE COMMUNITY HEALTH CENTRE

2299 Colville Rd, RD 4, Coromandel 3584
 Phone 07 8666618. Fax 07 8666619 Text number for the clinic is 4448

Mon, Tues & Thurs 9am – 5pm/ Wed 10am - 5pm/ Fri 9am - 4pm

For the after hours service, phone the clinic number 07 866-6618.

The On Call person will be paged by the after hours service.

Please remember - If it's an emergency, dial 111



We hope you are all doing well as we move into winter. If you have any long bone tenderness (lower leg (shin bone) or sternum (breast bone) when pressed firmly, you may have Vitamin D deficiency. Vitamin D is essential for how the body fights virus's and prevention of osteoporosis. NZ had very high rates of osteoporosis which increases your chance of poor health as you age and bone fractures with minimal force. Come and talk with staff at the clinic if you think you have these signs of Vitamin D deficiency.

We hope to continue to provide you with a quality Primary Health Care service however the ongoing unpaid community debt is very difficult for a small clinic like ours to carry. Our records show that at the end of the financial year we were owed about \$8500 by patients who had received treatment at the clinic. This impacts significantly on the services we are able to provide within our community. We would appreciate those who have an outstanding debt to make a payment or set up an AP through the bank. Even a small weekly amount can make a difference to an outstanding account and the clinic bottom line. Please call or email us to discuss ways to reduce your account. In addition we advise that the clinic can no longer supply supplements in advance of payment. All supplements must be paid for at the time of collection or your account must be in credit.

Lots of thank you notes from our team this month – Thank you to the mystery person, to Kelvin Mouristson, Alan Deadman, Colin Caldwell and some of the clinic staff (Hannah and Kate C) for a delivery of firewood both to

the staff house and the clinic. It is always a challenge for us to get enough wood for the season. We know this is a few people going the extra mile and we are very grateful!

Thank you to Rosemary Garland our finance administrator, who has now left the clinic but has continued in a similar role with the Health Trust, and to Jo Herbert who has returned to help us out for a short while.

Also a big thank you to our community for your patience during these times of change.

We welcome Jackie Allen who joins our team as finance administrator. Jackie has recently moved to our community and brings a wealth of skill and experience in the finance area to support our work at the clinic. Its Flu vaccination time and we are now taking bookings on a Tuesday and Thursday. These vaccinations are free for over 65's and those with an eligible condition.

We are seeking feedback on our Extended Care Paramedic (ECP) pilot. We are fortunate to still have Helen Weaver with us and we are the first rural practice to be piloting this project supported by St John and the Hauraki PHO. Your feedback is valuable, as we strive to make our service as effective as possible whilst managing through our current staffing shortage. Please email your feedback to practicemanager@colville.org.nz.

We are also gathering data for our locality planning meetings with the Hauraki Primary Health Organisation (PHO) in regards to patients needing extra care/support. We will keep you informed of any developments with this.

Take care out there,
The Colville Clinic Team

Taking your soft plastics from post to post.



We've partnered with the Packaging Forum and Future Post to make the recycling of your household soft plastics easy, with our pre-paid Soft Plastic Recycle Courier bags*.

Buy a pre-paid Soft Plastic Recycle Courier bag, fill it with your clean soft plastics, book a courier for pick-up, and we'll take care of the rest – helping to transform your plastics into long-life products like fence posts. Head into selected NZ Post stores, online, or through one of our retail partners: The Warehouse, Warehouse Stationery and select New World stores and TheMarket.com to grab yours for NZ \$7.

The whole soft plastic journey is included in the price of your bag, right from booking a courier pick up, through to dropping off your plastics to Future Post.



Step 1: Organise

Wash & dry your soft plastic.



Step 2: Pack

Fill your bag with clean soft plastic and seal when full.



Step 3: Send

Book a courier pickup, or drop off at your local NZ Post store.



Step 4: Renew

Your soft plastics will be transformed into long-life products.

Northern Coro Rubbish collection for June

Wed 8 June



Tues 14 June



Tues 21 June



Tues 28 June



Coro Refuse & Recycling Centre Goldmine Shop

Wednesday & Friday 9.30am - 3pm
Saturday & Sunday 9.30am - 4pm

525 Hauraki Rd, Coromandel
07 866 7616

Handling rubbish, including recyclable items, illegally dumped at the gates of our Refuse Transfer Station (RTS) outside of hours incurs a cost for all our district ratepayers that contributes to driving up the annual rates bill.

Jo & Bryan provide high quality tools from around the world to support gardening with efficient hand tools.



Ph 021 739 398
www.gardentools.nz

COLVILLE STORE



Ph 07 866 6805

colvillegeneralstore@gmail.com

Our opening hours :
Monday to Saturday 8.30am to 5pm
Sunday 10am to 4pm

Thank you for following the rules and wearing a mask and scanning or signing in.

We are currently looking for HR and Finance Team Administrator & casual staff to join our busy team.
The Colville Store team



*From the 1st of December the Store will not be filling LPG bottles anymore.
We will still be swapping bottles.*

David Wright

Wright Contracting Services

General & Heavy Engineering including:

- Welding
- Machining/ Fabrication
- Hydraulics
- Machinery Repair/ Maintenance

No job too big or small!

Onsite or at my Colville workshop

Phone: 021 100 2767

Email: dewwrightnz@gmail.com



Looking for a Midwife?

I'm an experienced midwife who loves living in the beautiful northern Coromandel. I provide community primary midwifery care and cover the upper and western side of the peninsula from Port Jackson to Manaia, including Colville & Coromandel Town.

Sheryl Wright

Moehau Midwives

Phone 022 500 1310

moehau.midwives@gmail.com

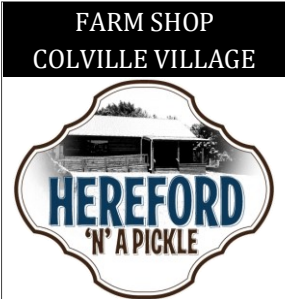
www.birth.net.nz



Jo & Bryan provide high quality tools from around the world to support gardening with efficient hand tools.



Ph 021 739 398
www.gardentools.nz



We are back in June!

100% HEREFORD BEEF BURGERS * HOT CHIPS * COFFEE * BAKING *
PICKLES 'N' JAMS * LOCAL ART * REAL FRUIT ICECREAM * MEAT

2318 Colville Road, RD4 COROMANDEL 3584
herefordnapickle@gmail.com Cathy Ward 07 866 6937
www.kairamatipolledherefords.com



Christina Wu

*BHSc (Acupuncture & Chinese Medicine)
ACC registered acupuncturist
Chinese Medicine practitioner
Taichi teacher*

16 Victoria Street, Coromandel (Tuesday to Friday)
Colville Community Health Centre (Monday)

Phone: **021 1134 768** Email: christinawu121@gmail.com
www.corocommunityacupuncture.co.nz

WAIKAWAU BAY



TREE SERVICES

Professional and qualified arborist services

Tree removal and pruning

Call for a free, no obligation, quote

Surya 0225670252



1299 Port Charles Road,
Coromandel
07 866 6614



Info@kiwiretreat.co.nz
www.kiwiretreat.com

Accommodation open 7 days

Café & Bar is open from 10am to 5pm, Wednesday to Sunday

Closed Mondays & Tuesdays

Restaurant open with bookings only

David's Handyman & House Painting Services



Before



After

Interior & Exterior House Painting

Rot & Gib Repair

Water Blasting or Soft Wash

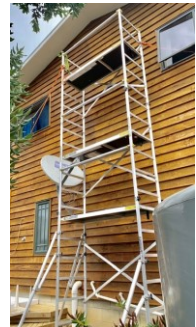
Deck Repairs & Staining

And much more...

Free Quotes

Contact David Porter Ph: 027 224 8925

email: davidkim@colville.org.nz



What's on in the Northern Coromandel?

Events might be cancelled or postponed due to Covid

Regular events

Mondays Tai Chi with Christina Wu @ Colville Hall, contact: 0211134768

Tuesdays Yoga with Kate @ Colville Hall - 10am **YOGA IS BACK!**

Aikido for kids @ Colville Hall - 3.15 - 4.15pm - **ON HOLD -**

Thursdays Enliven (Social Programme for Older People) - 10am

June

3 - 6 June Qi Gong for Health, Vitality & Wellbeing @ Mahamudra Centre

20 June Colville Postal Services AGM @ Colville Hall - 7pm

22 June NIWA Stream Monitoring Assessment (SHMAK) - Free workshop 10am - 3pm

23 - 26 June Winter soul soothe, women's retreat with Wild Stillness

30 June Trustee's applications close

Later on this year

Fri 8 July Garden to Table Bake Sale @ The Forager's - 1 to 3pm

4 - 14 August Mahamudra Retreat with Venerable Robina @ Mahamudra Centre

Labour Wknd Colville Easter Festival: Colville Sings Swing!

IMPORTANT NUMBERS

111	Fire ambulance, police emergencies needing immediate assistance
105	Police for reporting incidents not requiring immediate response
0800 CRIMESTOPPERS	for reporting crime (<i>anonymous</i>)
0800 611116	for medical advice or information 24/7
0800 044 334	National Sexual Harm Helpline (Text 4334)
0508 326 459	Sexual Harm - Child/Tamariki at risk
0508 828 865	Suicide Crisis Helpline
0800 543 354	Lifeline (<i>Whatever the issue, here to listen</i>)
0800 111 757	Depression Helpline: free text 4202
0800 688 5463	Outline (<i>all-ages rainbow mental health organisation support line</i>)
0800 376 633	Youthline (<i>free counselling services for young people</i>)
0800 764 766	National Poison Centre
07 8666618	Colville Community Health Centre
07 8666 815	Colville School
07 8666805	Colville General Store
022 645 3272	Colville Bay pre school (replacing previous landline)
07 866 8702	Coro pharmacy M - F 8.30am - 5pm; Sat 9am - 1pm

ALCOHOLIC DRUG HELPLINE

Free & Confidential 9am to 10pm everyday **0800 787 797**

Open friendly meeting. Anonymity assured, please phone **021 314 467**