



www.cssc.net.nz

NOVEMBER 2021 - N° 11

PĀNUI

Newsletter for the Northern Coromandel

CARSON calendar 2022



Fundraiser for Colville Easter Festival 2022
for sale at Colville Store or order at CSSC
cssc@colville.org.nz / 0274875131

\$27

Throw back to Colville Art Show



Art Show - Eli's car cards



Art Show -
Sophie Evans



Art Show - Intently Enjoying Art

Editor

Some beautiful events we had lately. What a success and what a beautiful community! Well done to everyone involved! Luckily, more is coming!

I'm wondering, what do you like to see in the Pānui? What is important to you?

I'd love to hear from you!

Marine

Guidelines for contributions

Contributions welcome, but may not always be used. We may also edit them for clarity and space.

Email your news, notices, advertisements, jokes, recipes, dreams & handy hints.

Please send in Word or Open Office (not PDF's).

Or post or drop contributions into CSSC.

Deadline for the next month

Mon 22nd November

For an electronic copy (which comes in colour), email: panui@colville.org.nz with 'subscription' in the subject line.

For a mail copy: email/phone us. Subscription cost for printed copies is \$25.00 per annum.

If you would like to support CSSC, you can donate online:
38 9009 0798558 00
(and put 'donation' in the reference field)
or contact Larisa
cssccordinator@colville.org.nz

Contact Information

Phone: 07 8666 920

Email: cssc@colville.org.nz
2311 Colville Road, RD4,
Coromandel 3584
www.cssc.net.nz

Hours:

Tues, Wed, Fri 10am - 3pm
Closed for lunch 12.30 - 1pm
Closed Mon & Thurs

Manager - Larisa Webb

cssccordinator@colville.org.nz
021 258 8037

Manager's Assistant - Anne Mountjoy

csscmanagersassistant@gmail.com

Financial Administrator

Nicole McCauley
csscfinance@colville.org.nz

Colville Harbour Care Nursery

Beth Pearsall
hccoordinateur@colville.org.nz
021 237 8678

Youth Group

Danielle Van Ressegheem
& Nathan McCauley
colvilleyouthgroup@gmail.com

Pānui editor - Marine Baillard

panui@colville.org.nz

Community Development Worker

Maria Dove
colvilleyouthcdw@gmail.com

Moehau ki te Moana Coordinator & CSSC Grant Writer - Cassidy Connor

csscgrants@colville.org.nz

Moehau ki te Moana Coordinator

Vanessa Edelsten
coordinatorvanessa@colville.org.nz

Colville Social Service Collective (CSSC) would like to

CSSC Main Funders



CSSC Funders



CSSC Supporters

Anchor	Resene	
The Colville Store	Waiaro Sanctuary	COMMUNITY WAIKATO
Daltons	White Star Honey	"Thinking Communities"
The Forager's Kitchen	Woodland's Honey	Enhancing Human Wellbeing in the Waikato
Hereford 'n' a Pickle	Coromandel Four Square	
Lothlorien		

**VACANCY:
Community Worker**



CSSC has an exciting opportunity for someone with a community focus – Community Worker. This role will be focused on identifying and meeting the needs of people in the community, including providing advice and referrals and creating and implementing initiatives. This is a part-time position based in our office in Colville.

For more information and a copy of the Job Description please contact the CSSC Manager's Assistant, Anne, on csscmanagersassistant@gmail.com or phone Larisa on 021 258 8037.

Applications close 5pm, Monday 8th November 2021.

**VACANCY:
Colville Harbour Care Nursery Manager**



CSSC has a wonderful opportunity for a motivated nature lover. As the manager of CHC you would be responsible for managing the nursery, including the cultivation and sale of eco-sourced plants. This is a part-time role.

For more information and a copy of the Job Description please contact the CSSC Manager's Assistant, Anne, on csscmanagersassistant@gmail.com or phone Larisa on 021 258 8037.

Applications close 5pm, Monday 8th November 2021.

Youth Nights

@ The Colville Hall
 Friends, music, chill, board games, kai
 For ages 11 up
Friday 5th November
 5.30 to 7 pm

Need help with transport?
 Contact Maria: colvilleyouthcdw@gmail.com
 Ph: 0210634828



Baby-sitting Course

CSSC are wanting to gauge the interest of young people in attending a babysitting course early next year. This is a 5 hours course aimed at developing skills and confidence in young people, over 14 years of age, who are wanting to become babysitters. The course is provided through Plunket and would be run at CSSC at a cost of approx \$30 per student. Contact Maria Dove at colvilleyouthcdw@gmail.com if you are interested in taking part in this.



COLVILLE HARBOUR CARE
Te Umangawhā o Ngā Waka

Do you want free trees?

Colville Harbour Care has teamed up with the Clean Streams Project from Waikato Regional Council.

We have 4000 native plants available for next year's (2022) planting.

How it works: You (the landowner) build a fence along a river or around a wetland to protect it from grazing stock.

Colville Harbour Care will supply the trees and plant them for free.

Minimum fencing distances and tree numbers apply.

Expressions of interest close **Mon 22nd November 5pm.**

For details contact the CHC nursery manager chccordinator@colville.org.nz

Thank you to everyone who joined our Potting Parties this year!

Together we filled over 10,000 pots!

*Thank you to **The Forager's Kitchen** and **The Hereford 'n' a Pickle** for the food.*

*And of course, to **DJ Kerry** for keeping the vibes high!*



Right2bsafe Workshop - All welcome

24th November 10am -1pm @ Colville Hall

How can I protect my child from sexual abuse/ Foundations of a family safety plan/ What to do if a child tells you about abuse/ Safer Babysitting/ New Partner/ Blended Families/ Stranger Danger/ Online safety and many more items, are included in the proposed programme for this workshop.

Please wear mask. Refreshments provided.

Register with CSSC, pop in, call 07 8666 920 or email csscmanagersassistant@gmail.com



31st October
10 -12pm
Colville Hall

Shoreline Management Plans - Public Meetings

Information on public meetings to discuss options for adapting to climate change.

Four Coastal Panels are working to define and reduce the coastal flooding and erosion risks to our people, property and assets. This is now the **"what should we be doing"** stage of the project. Those public meetings are to introduce the options for each of the 4 main geographic areas on the Peninsula.

Youth group news! by Danielle Van Resseghem

Youth Group Term 3 was very exciting! Lockdown turned up one session in and so when L2 allowed us to complete the term's sessions, we had fun working collaboratively with the school and L2 guidelines. What started off as fishing and kawakawa balm making, ended with tacos, pizza and ice-cream!

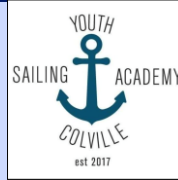
A huge thanks to Colville School for letting us use the premises, and a special thanks to Shayne Mackenzie who donated more bees wax than we can make balm :)

This term we are SAILING! This is being offered to all youth in the community, those who are interested from Colville School, permission slips will be sent home with the children this coming Tuesday. Please may they all be returned by Wednesday 27 October as the first sailing date is October 30th!

As fishing was cut short last term, this will be also offered this term for those who would prefer to fish.

We appreciate all the community support and look forward to a glorious summer on or near the water :)

Come sailing with us!



Youth Sailing Academy Colville and Colville Youth Group invite you to join us on the water. Come have fun and try your hand at sailing with our coaches.

When: Saturday 30th October
Saturday 13th November
Saturday 27th November
Saturday 11th December

Time: 12:00 – 16:00 (On the water at 13:00)

Where: Otautu Bay

Bring: togs, sunhat, wetsuit (we have some), warm drink, a snack and warm clothes for when you come off the water.

Please RSVP to:

Danielle Van Resseghem
Youth Group Coordinator

Email: colvilleyouthgroup@gmail.com

Phone: 027 571 3589

The Informers' Art Auction and Exhibition

FRIDAY 19TH - SUNDAY 21ST NOVEMBER

Hauraki House Gallery, Kapanga Road, Coromandel Town

Opening night and auction – Friday 19th November

Doors open 5.30pm • Auction 6.00pm

This is a major fundraiser for the Coromandel Town Information Centre

ALL WELCOME

Exhibition 20th-21st November

10.00am - 4.00pm

*** SPOT PRIZES *
* RAFFLES *
* WINE *
* NIBBLES ***





Colville ART Show, by Lena

Thanks to the **Creative Communities Scheme** for funding the Colville ART Show - we had a great exhibition - several artists sold out of the work they had on show at the hall and people went to their studios to order more.



Over half a dozen beautiful Cape Cod chairs, made by Greg Taylor, are now gracing the homes, decks and lawns of people who purchased from the ART Show. Eli Shepherd, our youngest exhibitor, sold all his Car Cards and is well on the way to getting the basketball hoop that he was fundraising for.

Thanks to all the artists, makers, and creative people for supplying such great work to exhibit. The 'Have a Go' area was successful with children and many shells, stars, tiles, linocuts, drawings and paintings were happily made, painted and created. Visitors from as far away as Motueka, Kapiti Coast, Gisborne, Cambridge and, of course, all over the Waikato and Coromandel Peninsula, came to the Colville ART Show for a look.

Colville Hall update, by Lena

Funding of \$10,000 has been received from New Zealand Lottery Grant Board (DIA) and the leak in the Hall roof is going to be fixed. People will be working on the roof at some stage in the future getting the tin screwed down tightly and hopefully stopping the rain from coming in!

David Porter has done a great job cleaning up the outside frontage of the Hall and the TCDC has been up and checked out the possibility of putting a traffic barrier in, just in front of the Hall, to stop cars parking right up close to the Hall. This is to allow a safe walkway from one Hall door to another - also they are looking at painting a safe pedestrian walkway from the Hall to the post office, and to the shop - just so the area is more clearly defined as a pedestrian area. Progress that, I hope, will come about before too long.

Cheers,
Colville Hall Secretary



Colville Tennis Club Incorporated Society

Hi everyone,

Summer is on its way!

Annual subs are due for Tennis Club members.

If groups and businesses would like to support the Tennis Club by having an advertising sign on the club fence, please contact Nathan, Debbie or Lorna for more information.

Colville Tennis Club AGM Sunday 14th Nov at the Tennis Club Room, 2pm, all welcome.



Tuesday 7th of December 12pm @ Colville War Memorial Hall
 Come and join The Colville Project Trust 's AGM
 It's time to get an update about the community project.
 Where is it at? What's up next? What can you do?
 Refreshments provided.



**COVID-19 vaccination
We're going mobile!**

Mobile vaccination is coming to you!

**Thursday 21 October
Thursday 11 November
10am-3pm**

**Colville Hall
2310 Colville Road**
Drop-in clinic, no booking needed.

*"Amohia ake te ora o te iwi, ka puta ki te wheiao."
"To protect the wellbeing of our people is paramount!"
Kōwhiri Te Whānui Pōwhiri Te Whānauwhiri Te Whānauwhiri*

www.waikatodhb.health.nz/covid19/mobile



**FORAGERS KITCHEN
SKELETON KREW PRESENT**

**HALLOWEEN
DANCE
PARTYY**

**DRESS UPS + PIZZA + DJKERRY + BOOTY SHAKIN
PIZZA + POSITIVE VIBES + PIZZA + BEATS
COLOURFUL LOCAL CHARACTERS + PIZZA + FUN
DRESS UPS + PIZZA + OTHER HUMANS + PIZZA
DANCE PARTY + DANCE PARTY + OTHER PEOPLES
KIDS + FORAGERS + DOOF DOOF + NOT YOUR
PROBATION OFFICER**

30 OCT @ FORAGERS KITCHEN, COLVILLE
FROM 6 PM UNTIL WHATEVER



The Forager's Kitchen
9am - 3pm Tuesday to Sunday
 Opening time is subject to change due to Covid,
 We are very sorry for any inconvenience.
 Keep an eye open for pizza nights and more events to come.
 Thank you for your support!



CALL, PUSH, SHOCK - THE DIFFERENCE BETWEEN LIFE AND DEATH

Three steps can make the difference between life and death for someone in cardiac arrest.

St John recently marked Restart a Heart Day (16 Oct), an annual global initiative aimed at highlighting the importance of taking immediate action when someone goes into Cardiac Arrest – this year focused on the 3 steps of call, push, and shock.

Last year, St John Ambulance treated over 2,000 people for a Cardiac Arrest throughout New Zealand, with only 31% of those surviving to hospital arrival and only 13% leaving hospital alive.

Cardiac Arrest can happen to anyone, regardless of age or medical history and continues to be New Zealand's biggest silent killer, with ischaemic heart disease one of the main causes of death in NZ each year.

St John Clinical Director, Dr Tony Smith says a person's survival rate drops by 10-15 percent for every minute without CPR or defibrillation—but their chances dramatically

improve the sooner CPR begins.

“St John wants everyone to have the confidence to perform the 3 steps that can double a person's chance of survival: **call 111 for an Ambulance, start CPR and use an AED** (automated external defibrillator). Using an AED is simpler than using a mobile phone. Anyone can do it, just turn it on and follow the voice instructions.”

Learn how to locate the nearest public AED at aedlocations.co.nz or download the AED Locations app.

“Last year, St John trained more than 67,000 people in CPR and how to use an AED. If you want to learn these skills, sign up for a free programme called 3 Steps for Life or book a St John First Aid course,” says Dr Smith.

“If you already know CPR and how to use an AED, you can become a GoodSAM responder and be alerted to cardiac arrests in your community, so you can provide help before emergency services arrive.”

New Zealand has more than 6,000 people registered as GoodSAM responders and the number of AEDs in the community is growing, with more than 5,500 registered throughout the country. That number has been bolstered at a number of Marae across New Zealand too, with gifts of AEDS into vulnerable communities by ASB with the support of Phillips and St John.

Wendy Newman, Station Manager Colville

FIRST AID COURSE

Friday 19th Nov

9am – 5pm

COLVILLE HALL

\$150 – FULL COURSE

\$120 – REFRESHER



Register with CSSC, pop in, call 07 8666 920 or email csscmanagersassistant@gmail.com



At Colville school we have a rich local Curriculum which provides opportunities for the students to learn about the local environment and know *their* story through authentic experiences. We have been working with Briar van Dort, a local artist, to learn the traditional skills of Raranga (a plaiting technique used for making baskets and mats with flax) to share the stories of our beautiful whenua. The **Fishing Net** weaving, created by the Colville year 4-8 students, was on display at the Colville Arts Show along with their retelling of its origins.



Origin of woven fish net

The Ongohi stream has its source at the summit of Moehau and was considered as one of the waterways used extensively by the legendary patupaiarehe, the tiny fairy-folk inhabiting the area.

In those ancient times, it is said that these forest people had developed skills in hunting and fishing which were later adopted by ordinary men. It was here, according to Māori legend, that an ancestor named Kahu gained the knowledge of weaving nets.

Reference:

TE TAKOTO O TE WHENUA O HAURAKI (Hauraki landmarks) by Taimoana Turoa.

Kahu and the Patupaiarehe by Natalia Y5

Long ago there was a chief named Kahu. One night, while he was sleeping on the sand dunes of Otautau Bay, he was woken by the laughter of the patupaiarehe of Moehau mountain. The patupaiarehe were surrounding a woven flax net full of fish. Kahu knew that if he distracted them for long enough, when the sun rose, they would flee for the darkness... so

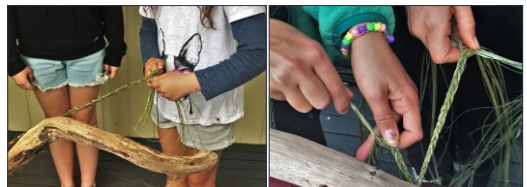
that's what he did. As the sun rose the patupaiarehe disappeared into thin air. Kahu started to untie the flax net. Once all the knots were loose, he threw the fish back into the ocean. Never to be seen again.

Kahu and the Net by Eli Y5

There was a story of a chief who discovered the net, his name was Kahu. One misty morning Kahu set north and found a lonely beach now named Waikawau. He fell asleep on a sand dune and was awoken by laughter... patupaiarehe from the dark shadows of Moehau. Despite his fear, he wanted to see what they were doing, "They are fishing with a net made of Harakeke," he whispered. Seeing as it was dark, the patupaiarehe did not notice him as he snuck in. Kahu started cutting the knots of the flax holding the fish. He knew that by morning the patupaiarehe would flee from the sun and leave their net behind. He was right! Kahu took the net to his people and taught them how to make it.

Kahu Steals the Net by Holly Y8

Kahu was travelling when he found himself stranded along Waikawau beach, just as night fell, he slept in the sand dunes. He was awoken by the sound of voices and laughter. At the edge of the water there was a group of patupaiarehe, fairy people, catching fish in a woven flax net. Kahu crept behind them hoping to steal the net and see how it was made. It was dark and he was slight like the patupaiarehe. They didn't notice him as they thought he was one of them. Kahu helped thread the gutted fish and made his knots so that they would easily come undone. His plan worked and as the sun rose the fairy people suddenly disappeared, leaving the net and all the fish.



COLVILLE BAY PRE-SCHOOL

Charity Inc.



Te Umangawha taku whare ako.

*Ka whaangai, ka tupu, ka puaawai
to nurture, to grow, to blossom*



Thanks Nicholas Smith for your amazing work, you are our Colville darling !

We are proud of our rich local curriculum, treasuring our history and connections to Moehau, Tiikapa te Moana and the community. Please get in touch if you would like to contribute to our programme with cultural and educational experience for our tamariki, join the Governance Committee or get involved.

We welcome all children from 0-6years.

Open Tuesday to Friday 8.45am to 3pm during School terms.

**20 hours Free ECE for 3 years and over.
WINZ subsidies available.**

► For enrolments and inquiries please contact our Senior teacher, Esther Powell:

cbpreschool@xtra.co.nz

Colville Bay Pre-school is a not-for profit charity set up as an incorporated society, owned and run by our community.

Want to support our wonderful centre?
Donate online: 38-9005-0803508-02.

Or volunteer hours on building maintenance.

2391 Colville Road, Colville
(Behind Colville School)

Ph 07 866 8319

www.colvillebaypreschool.co.nz

**We are looking for a
FINANCIAL ADMINISTRATOR, flexible
schedule, 6 to 10 hours per week.**

For more info, please contact

treasurer@colvillebaypreschool.co.nz

Applications close 07/11/21

Adam Walter has passed. Peacefully.

11/5/50 - 9/10/21 by Layla

Thank you to the Colville community for your care and love of Adam over a lifetime in the 1970's and 2020's. I was with him as he passed, I knew. He knew and was at peace. It was 9.57am 9th October 2021. Exactly one year since his first cancer diagnosis. Su Askwith was present in the room nearby. Adam chose to let go, first with a little determination but ultimately with much grace.

He shared much affection, and his gorgeous smile in these last few weeks. We are pleased. He was in hospice care for just two days after almost three weeks at Layla's Auckland home. He'd been in the rotating care of Sally Barraud, Richard McLachlan and Su Askwith, while I, my partner Jamie and, Adam's granddaughter, Billie shared constant evening meals and regular companionship. You will notice lights on at Cabbage Bay, we have local people staying there. Due to Covid levels a cremation is planned in Auckland, followed by a Colville celebration in the future. Thank you for your messages which were conveyed to Adam. Aroha Nui Adam Henry Walter.





COLVILLE COMMUNITY HEALTH CENTRE

2299 Colville Rd, RD 4, Coromandel 3584

Phone 07 8666618. Fax 07 8666619 Text number for the clinic is 4448

Mon, Tues & Thurs 9am – 5pm/ Wed 10am - 5pm/ Fri 9am - 4pm

For the after hours service, phone the clinic number 07 866-6618.

The On Call person will be paged by the after hours service.

There is no answerphone service during the hours we are open

Please remember - If it's an emergency, dial 111



This is what our dynamic team is made up with :

Dr Kate Armstrong - Dr Annette Steele - Teresa Carrington (*Nurse Practitioner*) - Missy Takizaki (*Practice Manager*) - Lil Takizaki (*Cultural Facilitator*) - Rosemary Garland (*Finance*) - Talei Russek (*Registered Nurse*) - Niki Pucci (*Registered Nurse*) - Juliana Williams (*Registered Nurse*) - Diane Morreel (*Registered Nurse*) - Hannah White (*Receptionist*) - Kate Campbell (*Receptionist*) - Michelle Dellabarca (*Relief Receptionist*) - Mariana Brosnan (*Relief Receptionist*)

Happy November Clinic,

Dr Annette Steele's days are Monday, Tuesday and Thursday.

Dr Kate's days are Monday, Tuesday and Thursday.

There is no DR here on Wednesday or Friday, this is nurse led clinic with GP back up if needed by phone.

Prescriptions - please try and get these requests done on the days that there is a DR. Requests can be made through ManageMyHealth or by email/text as usual. Please make it clear if you will pick up from the pharmacy or have the RD bring it out.

Blood tests - only to be requested by the Dr or nurses. If you want specific tests, then these must go through our Dr's or a recall system set up by the DR or Nurse Practitioner to be followed by all staff.

Covid vaccination. Our clinic won't be administering them because Te Korowai will be doing this, however, due to the current situation please contact Hauraki PHO.

This service is supported by the clinic but looked after by Colville Community Health Trust.

Cervical Smears – we have RN Diane doing smears once a month on a Monday.

Please book in if you are overdue.

Clinicians regular and upcoming :

Christina Wu – Acupuncture (Mondays)
0211134768

Rachel Benmayor – Counselling (Thurs after-
noons) 0224107227

Lisa Gruythuysen – Contact care (monthly
Thursday) 0274038026

Dan Judd– Acupuncture (tba – Thurs/Frid)
0220705081

Di Hayes – Homeopath (Weds monthly)
0226727938

Afterhours calls – Our staff cover the afterhours calls 24/7. If you don't get to speak to one of our team and are transferred elsewhere, please let us know.

Big Thank you to all who support our clinic.

AGM of the Colville Cooperative Society & the Colville General Store

The Annual General Meeting of the Colville Cooperative Society (CCS) and the Colville General Store Ltd (CGS) will be held on

Sunday 14th November 2021, 1pm, at the Forager's Cafe.

All membership of the CCS are invited and the meeting is open to community members.

A light lunch will be provided at 12pm before the meeting.

UCLA Report, by Reihana Robinson

The Upper Coromandel Landcare Association requests no repetition of the 2017 residual poisoning (including toxin 1080) in our backyards in the settlements of Port Charles.

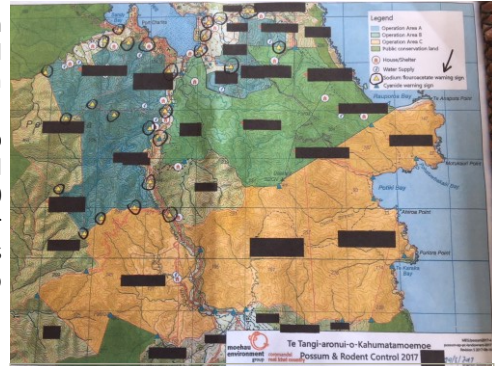
The attached map, supplied by the Waikato District Health Board in response to an Official Information request, shows 27 locations of 1080 warning signs. The DHB permission was granted for placement of 1080 poison in the Port Charles residential neighbourhoods and in proximity to homes and holiday batches for a period of one year. Would this be tolerated in Coromandel town? Then why in Port Charles?

Positive Note (temporary)

UCLA received an email in the first week of October from EcoFX (the company contracted by DOC to aerially poison Moehau) stating *“Due to the Waikato district health board being inundated with the current COVID 19 situation, they are not processing any applications, Moehau included.”* Organic growers on Aotea (island of trappers) cleverly comment on the EcoFX email stating NO PERMISSIONS FOR AERIAL 1080 as *“the only Covid outcome that has anything to do with health.”* The Waikato DHB under the Executive Director Māori, Equity & Health Improvement (Riki NiaNia) wrote on 20 September 2021 that *“no public health permission has been granted at this time for VTA aerial and baitstation in Moehau for 2021/22.”* Of course the operational words are *“at this time.”*

Sadly permissions can be granted any day, and, as we all know NO request to poison has ever been denied by the Waikato DHB.

NOT IN OUR COMMUNITY, thank you.



Map supplied by Waikato District Health Board



Kia ora!

Good news - the Manuka Honey - Kumarahou tonics, are ready to go. If you are 65+ or have a health condition that leaves you with lowered immunity to viruses such as covid, colds or influenza, and would like to take advantage of this free gift, please contact Emily (colvilletrustmanager@gmail.com).

The Health Trust would like to thank the donors of the honey (Shayne & Elizabeth McKenzie) and the kumarahou (KRC Products), and the team of volunteers who gave their time to make it happen.

In the coming weeks and months, we'll be adding health supporting information to our website. If you haven't already, now is a great time to have a look and add your name to our subscribers list. It's the best way to keep up to date on our activities, and get notices of fundraising events, new articles and healthy living information arriving on the website. The website also has a link to our Givealittle page, making it easy to donate, if you would like to support what we do.

Website: www.colvillecommunityhealthtrust.com

Thank you, with your help, wonderful things happen!

Emily

A Poison-Free Coromandel is our Future: Part 2, by Stephanie McKee



Coromandel Our Backyard is an informal alliance of local landowners who practice organics, permaculture and biodynamics. And who have done their research over many years and who consciously choose to not use synthetic poisons for food growing, weed or pest control.

The Covid Pandemic has seen huge growth in home food growing, while prices of chemically grown and processed foods

in the supermarkets are rising. Local food sharing initiatives include Organic Vege Boxes (shout out to **Papa Aroha Organics!**) and CropSwap groups.

The organic sector is seeing huge growth and there's a vibrant network of regenerative farmers in Aotearoa. For more inspiration check out organicnz.org.nz and listen to Dr Jessica Hutchings, a kaupapa Māori researcher who says that growing food for one's community is a political act. She is promoting Māori food sovereignty and the system called **hua parakore** - Māori organic growing, which involves organic practices grounded in a Māori world view.

The **Global Permaculture Summit** has been inspiring to dip into last week. It's encouraging to learn, in these uncertain times, about how many visionary and future-thinking communities around the world are working to create healthy and productive food growing using innovative eco-design systems: integrating water management, shade and sun factors, soil health, plant diversity, vertical and horizontal layering, swales and terraces, greenhouses, composting systems, wicking beds and more. Back to the garden in this beautiful warming weather!

Links:

<https://vergepermaculture.ca/courses/hope-knowledge-a-plan-summit/>,

<https://ata.land/our-projects/>, www.coby.nz,

<https://www.cropswapnz.co.nz/>, <https://organicnz.org.nz/>

<https://www.rnz.co.nz/national/programmes/sunday/audio/201782628/dr-jessica-hutchings>

Daniel Judd

Natural Health Provider

Global Balance Acupuncture

NZ Registered and Traditionally Trained

Community Services and
Super Gold Card accepted
Good Bloke rates available

Phone **0220 7050 81**

Tuesday and Friday by appointment at the Colville Community Health Centre

Using Distal points to achieve Instant Results.

"Tapping into the Medicine Cabinet within"

Also available Mirimiri, Romiromi,
Cupping, Heat Therapy,
Chinese Herbal Medicine,
TaiJiQuan Exercise Therapy,
TCM full diagnosis.



WILD STILLNESS RETREATS

with Beth & Vanessa

'Announcing our Spring Refresh Retreat, a women's weekend like no other! 5 - 7 Nov 2021 @ Mahamudra Centre'

Spring Refresh Retreat – A Women's weekend

Freshen up this spring by securing one of the 14 limited spots for this weekend. With a small, intimate group size, you can escape for three days and two nights to connect and refresh your mind, body and soul.



Our **Retreat** is all about moving through the seasons, shedding our darkness and moving towards the light.

Connecting into the collective strength of like-minded women, **feel refreshed and clear** with a fuller heart and more relaxed way of being.

Our programme:

- Daily sunrise yoga - Evening Yin yoga
- Guided meditations - Feminine Rituals
- Open Dance - Relaxing Yoga Nidra
- Nourishing vegetarian meals and snacks
- Wellness package on arrival

This retreat is open to women* 15 years and older.

No previous experience of yoga or meditation necessary.

**All individuals identifying as female and/or non-binary welcomed.*

Book by email

wildstillnessretreats@gmail.com

For more info visit

www.wildstillnessretreats.weebly.com



Mahamudra Centre for Universal Unity

2183 Colville Road
Ph 07 8666851

www.mahamudra.org.nz



November Events

Retreats

Wild Stillness Spring Refresh Retreat
5-7 November

Healing the Heart Weekend Workshop:
Patience and Forgiveness **12-14 November**

Lamrim Study Weekend
20-21 November

Teachings on the Heart Sutra
27-28 November

Practices

Free Drop-in Meditation
8-8.30am Mon-Fri

Guru Puja
4pm 14 November; 10am 29 November

Extensive Tara Puja
10am 12 November

Medicine Buddha Puja
4pm 19 November

"Problems come when you are not living in a natural state of mind. Then, no matter what you are doing, your mind will be on something else. You are supposed to be cleaning your house, but your mind is thinking about going to the beach and eating ice cream. That is when you run into difficulties." - Lama Yeshe



Its weed season

It's that time of year. Now well into spring, its wonderful to see so many plants coming out of their winter hibernation with signs of promising new growth everywhere.

Unfortunately, it's not just our beautiful natives and favourite garden plants that love the spring weather. All over our local rohe, many invasive weeds are also finding the warm wet weather, the perfect growing conditions to flourish. New Zealand now has many invasive weed species that threaten the bush because they grow rapidly and can easily take over an area, displacing native plants and preventing seedling

regeneration. When left to take over, weeds can lead to the loss of habitat for many native species but also provide cover for some of the dangerous predators that can threaten our native wildlife. Kahlili ginger, climbing asparagus, woolly nightshade, tree privet, elaeagnus and pampas grass are just a few of the weeds that are growing rampant in the Kapangā/Coromandel rohe.

You can learn about the different types of weeds and how best to tackle them at Weedbusters.org, they provide tips on how to best approach weed infestations, large or small; however it always pays to get professional advice so you don't spread the problem further.

See www.weedbusters.org.nz/what-are-weeds/controlling-weeds for more information.

Art for a cause

Earlier this year Moehau Environment Group celebrated 20 years since a group of locals set out to protect kiwi and native birds in te ngahere of the northern Coromandel. We celebrated this brilliant milestone with a stunning commissioned artwork by Pete Sephton who was inspired by "the 20 years of volunteer commitment to protection of wildlife on and around the maunga".

These limited edition prints are available; every purchase contributes funds towards ongoing predator control to protect our ecosystems in

our rohe, not to mention looking amazing on your wall too! Snap one up soon before it's too late. Unframed original screen prints are \$100. Email info@meg.org.nz to order.

AGM 27th November 2021 at 10am @St Johns Hall, Coromandel. All welcome.

Have a great month everyone!

Contact us at info@meg.org.nz or make a donation by visiting our website www.meg.org.nz



Pete Sephton and his artwork

Rejuvenation of the Committee of Management, Colville Cooperative Society, by Tony Wasley

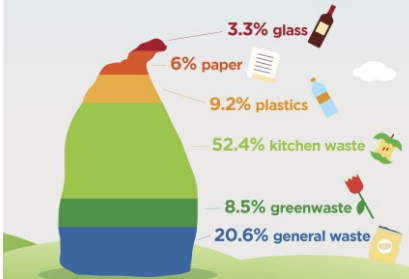
Succession planning for governance.

- We need a new generation of members to put their hand up and be a part of the governance of the Colville Cooperative Society (CCS) and its' assets. Community owned-and-run assets for the benefit of the community needs community involvement in the running and governance of the assets.
- The Committee of Management (CoM) is the governance entity of the CCS. It manages the CCS assets on behalf of the membership.
- The CoM members (positions are voluntary) are elected by the membership of the CCS at each AGM. We meet monthly and the work load is not onerous but is important.
- Some of the older, longstanding members wish to retire but also to pass on their knowledge and processes to a new generation.
- We are asking CCS members, old and new, to come to the next AGM and be prepared to serve on the CoM on behalf of the membership and the Colville Community.

A few tips about recycling, by Jane Powell

79%

OF WASTE IN OUR KERBSIDE RUBBISH BAGS CAN BE DIVERTED FROM LANDFILL



What your recycling wheelie bin likes:

- * washed tin cans and lids
 - * washed uncrushed plastic milk bottles without the lids
 - * washed plastic with numbers 1 and 2
 - * flattened cardboard boxes, with any plastic removed
 - * loose paper gathered up (e.g. in a used paper bag)
- Then you will save it from going to landfill.

All clean, soft plastic that you can crunch in your hand, can be taken to a number of Countdown, The Warehouse, New World, Pak'n Save stores and other locations to be turned into fence post, ducting and other products.

Check out <https://www.recycling.kiwi.nz/>

Any question or interest, let's chat (at CSSC on Tuesday's!)

Northern Coro Rubbish collection for November

Tues 2 

Tues 9



Tues 16 

Tues 23



Tues 30 



Coro Refuse & Recycling Centre Goldmine shop

Wednesday & Friday 9.30am - 3pm
Saturday & Sunday 9.30am - 4pm

525 Hauraki Rd, Coromandel
07 866 7616

Handling rubbish, including recyclable items, illegally dumped at the gates of our Refuse Transfer Station (RTS) outside of hours incurs a cost for all our district ratepayers that contributes to driving up the annual rates bill.

David Wright

Wright Contracting Services

General & Heavy Engineering including:

- Welding
- Machining/ Fabrication
- Hydraulics
- Machinery Repair/ Maintenance

No job too big or small!

Onsite or at my Colville workshop

Phone: 021 100 2767

Email: dewwrightnz@gmail.com



COLVILLE STORE



Ph 07 866 6805

colvillegeneralstore@gmail.com



Our opening hours for November:

Monday to Sunday 8.30 to 5pm

Under Level 2, you must be wearing a mask and scan or sign in. Also remember to sanitise when entering the store.

For those interested in casual work over summer, please ask staff for forms.

Finally, thank you for your support and stay safe!

The Colville Store team

On the **1st of December** the Store will not be Gas filling LPG bottles.
Talk to us if this impacts on you so we can find a solution that suits.



**Coromandel
Community Acupuncture**



We have had positive results of acupuncture not just for pain relief, but other health benefits for your overall well being.

*Christina Wu, ACC registered acupuncturist
Tai Chi teacher*

Tiki House, Coromandel on Wednesdays/Thursdays

Colville Community Health Centre on Mondays.

Phone: **021 1134 768**

Email: **christinawu121@gmail.com**

www.corocommunityacupuncture.co.nz

Looking for a Midwife?

I'm an experienced midwife who loves living in the beautiful northern Coromandel. I provide community primary midwifery care and cover the upper and western side of the peninsula from Port Jackson to Manaia, including Colville & Coromandel Town.

Sheryl Wright

Moehau Midwives

Phone 022 500 1310

moehau.midwives@gmail.com

www.birth.net.nz



David's Handyman & House Painting Services



Before



After

Interior & Exterior House Painting
Rot & Gib Repair
Water Blasting or Soft Wash
Deck Repairs & Staining
And much more...

Free Quotes

Contact David Porter Ph: 027 224 8925
email: davidkim@colville.org.nz



FARM SHOP
COLVILLE VILLAGE



OPEN ALL NOVEMBER

9:00am to 4pm

Thank you all for your
awesome support and understanding during
this crazy and uncertain time.

*We are looking for Staff to help us over the busy
summer period so pop into the shop to see Cathy or
call us on 07 8666937*

100% HEREFORD BEEF BURGERS * HOT CHIPS * COFFEE * BAKING *
PICKES 'N' JAMS * LOCAL ART * REAL FRUIT ICECREAM * MEAT

2318 Colville Road, RD4 COROMANDEL 3584
herefordnapickle@gmail.com Cathy Ward 07 866 6937
www.kairamatipolledherefords.com



Like us on
f Facebook

1299 Port Charles Road,
Coromandel
07 866 6614



Info@kiwiretreat.co.nz
www.kiwiretreat.com

Accommodation open 7 days

Café & Bar is open from 10am to 5pm, Wednesday to Sunday

Closed Mondays & Tuesdays

Restaurant open with bookings only

Hi Everyone,

The Himalaya shop will be open for early season hours on most days through November month from **10am to around 3pm**. However, we will be only open for the weekend in the first week of the month.

Cheers, Rob and Anette

Anette 021 139 7838/ Shop 07 8667 224/ After hours 07 8666 865

Jo & Bryan aim to provide high quality tools from around the world to support gardening with efficient hand tools.



Ph 021 739 398
www.gardentools.nz

White Star Honey



Producing Local Delectable Honey
Available from Colville General Store or direct at White Star Station / Colville Farm Holidays.
Contact Tellic **021 770 382** or e-mail wshoneynz@gmail.com

Self Service Coin Operated Washing Machine & Dryer OPEN 7 days

Available at White Star Station / Colville Farm Holidays 2140 Colville Road, Colville, Coromandel (2 min drive, 1.7km south of the Colville General Store towards Coromandel Town)

Follow the signs at the front Gate.

\$4 per wash / **\$4** for 45 min approx. drying time. Take **\$1** and **\$2** coins.



WHATS ON IN NORTHERN COROMANDEL?

Regular events

Events might be cancelled or postponed due to Covid

Mondays	Tai Chi with Christina Wu @ Colville Hall - 4.10pm at L2 & L1. max 6 people
Tuesdays	Yoga with Kate @ Colville Hall - 10am at L2 & L1 Aikido for kids @ Colville Hall - 3.15 - 4.15pm
Thursdays	Enliven (Social Programme for Older People) - 10am Sunset Yoga (in term times) with Vanessa @ Colville School Hall 5 - 6.15pm <i>Back in November</i>

Oct/ Nov

30 Oct	Halloween Dance Party @ The Forager's - from 6pm Youth Club - Sailing @ Otautu Bay - 12 to 4pm
31 Oct	Public meeting about Climate change @ Colville Hall - 10am to 12pm
5 Nov	Youth Nights @ Colville Hall - 5.30 to 7pm
8 Nov	Community Worker & Harbour Care Nursery Manager Applications close 5pm
11 Nov	Mobile Vaccination @ Colville Hall - 10am to 3pm
13 & 27 Nov	Youth Club - Sailing @ Otautu Bay - 12 to 4pm
14 Nov	Tennis Club AGM @ - 2pm Colville Cooperative Society & Colville Store AGM @ The Forager's - 1pm
19 Nov	First Aid Course @ Colville Hall - 9am to 5pm
24 Nov	Right2bsafe Workshop @ Colville Hall - 10am to 1pm
27 Nov	MEG AGM @ St John's Hall, Coromandel - 10am <i>Mahamudra Centre events - see p14</i>

Later this year

7 Dec	The Colville Project AGM @ Colville War Memorial Hall - 12pm
11 Dec	Youth Club - Sailing @ Otautu Bay - 12 to 4pm

IMPORTANT NUMBERS

111	Fire ambulance, police emergencies needing immediate assistance
105	Police for reporting incidents not requiring immediate response
0800 CRIMESTOPPERS	for reporting crime (<i>anonymous</i>)
0800 611116	for medical advice or information 24/7
0800 787 797	Alcohol Drug Line 24/7
0508 828 865	Suicide Crisis Helpline
0800 543 354	Lifeline (<i>Whatever the issue, here to listen</i>)
0800 111 757	Depression Helpline: free text 4202
0800 688 5463	Outline (<i>all-ages rainbow mental health organisation support line</i>)
0800 376 633	Youthline (<i>free counselling services for young people</i>)
0800 764 766	National Poison Centre
07 8666920	Colville Social Service Collective
07 8666618	Colville Community Health Centre
07 8666 815	Colville School
07 8666805	Colville General Store
07 8668 319	Colville Bay pre school
07 866 8702	Coro pharmacy M - F 8.30am - 5pm; Sat 9am - 1pm

ALCOHOLIC DRUG HELPLINE

Free & Confidential 9am to 10pm everyday **0800 787 797**

Open friendly meeting. Anonymity assured, please phone **021 314 467**