

PĀNUI

October 2020

Newsletter for the Northern Coromandel



2311 Colville Rd, Colville, 3584

PHONE: 07 866 6920 cssc@colville.org.nz

HOURS: 10am - 3pm TUES, WED, FRI

Closed MON, THURS

panui@colville.org.nz www.cssc.net.nz

Kia ora,

Well it has been a strange month, full of uncertainty and mayhem in other parts of the planet. Best to stay low key and hope the pandemic eases off. Now we have longer days, we can get more done , preparing for Summer.



Disclaimer: The opinions expressed in this publication are not necessarily those of CSSC

Guidelines for contributions

Contributions are welcome but may not always be used. We may also edit them.

Email us your news, notices, advertisements, jokes, recipes, dreams & handy hints.

Please send in Word or Open Office (not PDFs). Or post, or drop contributions into CSSC.

**Deadline for the November issue:
Tues 20 October**

**Subscriptions if you live
outside delivery area**

For an electronic copy (which comes in colour): email panui@colville.org.nz with 'subscription' in the subject line. For a mail copy: email/ phone us. Subscription cost for printed copies is \$25 per annum. Contact us on

07 8666 920 or email us at panui@colville.org.nz

Contact Information

Phone 07 8666 920

Email: cssc.net.nz

2311 Colville Road, Colville.

Hours:

Tues,Weds, Fri 10am -3pm

Mon & Thurs Closed

Closed for lunch 12.30-1pm

Coordinator - Larisa Webb

csscordinator@colville.org.nz

021 258 8037

Financial Administrator Nicole McCauley

csscfinance@colville.org.nz

Community Worker - Peter Selwyn

communityworker@colville.org.nz

021 057 2176

Phone/email/drop in to make an appointment (available Tues & Fri)

Community Development Worker -

Pamela Grealey

cdw@colville.org.nz

Colville Harbour Care Nursery

Beth Pearsall

chccordinator@colville.org.nz

021 237 8678

Youth Group - Elizabeth Mitchell &

Nathan McCauley

youthgroup@colville.org.nz

Pānui editor- Kate Shelley

panui@colville.org.nz

Youth Mentor programme

Spike Mountjoy

colville.mentor@gmail.com

022 6047 975

Colville Social Service Collective (CSSC) would like to thank our funders and supporters :-

CSSC Main Funders



CSSC Funders



CSSC Supporters

- The Colville Store
- Resenes
- COMMUNITY WAIKATO
- Daltons
- Waiaero Sanctuary
- Whitestar Honey
- Woodlands Honey
- The Forager's Kitchen
- Coromandel Four Square
- Coromandel Senior Settlements Trust
- Hereford 'n' a Pickle
- Lothlorien

CSSC would like to express our immense gratitude to our funders and supporters

If you would like to support CSSC you can donate online with a bank deposit to:

CSSC 38 9009 0798558 00
(and put donation in the reference field) or
contact Larisa
cssccordinator@colville.org.nz

First Aid training

Wednesday November 11th 9 am

Colville Hall

Please book your place at CSSC

First Aid Revalidation

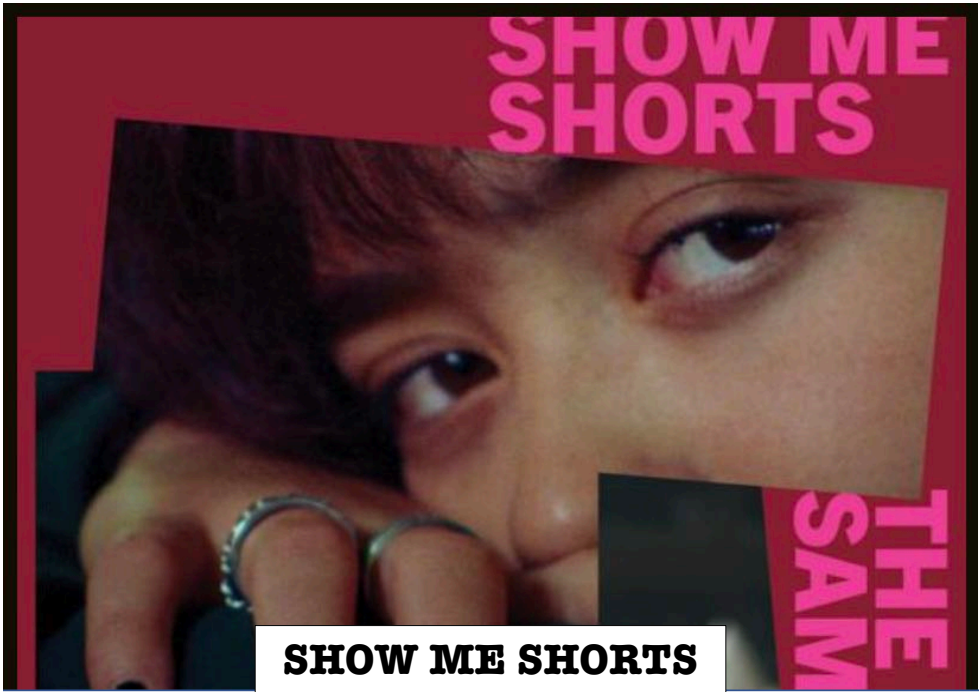
It's that time again! This class room based course revalidates your first aid skills, keeping your knowledge up to date and relevant. First aid certificates must be revalidated every two years. \$120 6 hours

Essential First Aid

Perfect for low risk workplaces – this one day classroom course prepares you for responding to the most common emergency situations
\$150 8 hours (1 day)

**Please book by 28 October on
ph 8666 6920 cssc@colville.org.nz**

NEW ZEALAND RED CROSS
RIPEKA WHERO AOTEAROA



**SHOW ME SHORTS
Returns to Colville!**

LET'S GET PHYSICAL 7.30pm Fri 30 Oct 2020 **M**

❖ This is a vibrant selection – with the energy of music, dance and sporting prowess.

THE SAMPLER 7.30pm Fri 6 Nov 2020 **M**

❖ A selection of some of Show Me Shorts most wonderful films.

* \$12.50 OR \$20 for 2 nights *

Ticket outlets: Colville General Store

Richardsons Real Estate, Coromandel

Tickets available from 2 October 2020



First, a big thank you to all the donors of furniture and supplies for our new Colville house. Thanks to this community's unending generosity, we have just about everything we need.

In Trust news, Annette and Michael James are retiring from their trustee roles, and we are sad to see them go. We extend our heartfelt thanks to them for their time, care and commitment over the years, and wish them all the best. We are pleased however, to be adding two new trustees to our team - Linley Rose and Robert Davis, both whom come to us with a world of experience, expertise and enthusiasm.

At the first meeting of our new trust board we'll be discussing our planned fundraising activities. (A teaser you'll need cake pans and maybe a pedometer!) All our events will be advertised on our website, and if you sign up to our website contacts list, we'll make sure you know what is happening. So check us out at www.colvillecommunityhealthtrust.com

Coromandel Town

New seats, a rubbish bin and BBQ have been installed and it was officially opened this week by Coromandel-Colville Board Chair, Peter Pritchard and Lions Club President, Sue Hughes, followed with a blessing by Rev Claire Stewart.



ELECTION DAY

Don't forget that Saturday October 17th is election day, with early voting starting on October 3rd (at the Citizen's Hall in Coromandel Town)

This year there are two very important items on the ballot, the Cannabis Legalisation and Control Referendum and the End of Life Choice Referendum, as well as the usual candidate and party vote.

You can read about the choices available at <https://www.referendums.govt.nz/>
If you aren't registered to vote you cannot have your say on these issues.

To register or to update your details you can go online at <https://vote.nz/enrol-to-vote/enrol-check-or-update/>

Phone free on 0800 367656 to get a form

Text your name and address to FreeText 3676 and the form will be posted out to you. Collect an enrolment form from CSSC or the Post Office. You can enrol and vote at any voting place if you haven't been able to enrol prior but you will need proof of address and a form of picture identification.

We have a New Zealand Covid Tracer booklet for those who do not have the app. Copies are available from the Information Centre; or order by Email to Covid19Response@dpmc.govt.nz.

If you're an organisation with a wide reach to New Zealanders who may need this booklet, you can order copies to distribute to your communities.

How to use the NZ COVID Tracer booklet:

Keep your booklet with you so you can record your movements whenever you leave your house. The booklet can fit in your pocket, handbag or backpack. Write in the booklet where you have been, what time you were there, how you got there and who you met there — if you met someone you know. Use your booklet when you come into contact with other people, like in a shop, or when you cannot keep 2 metres away from others.

360 Ferry -- Service resumes as follows: Labour Weekend Friday 23 October through Monday 26 October; Friday nights, Saturdays and Sundays from Friday 30 October through Sunday 20 December; daily service from 21 December through 17 January; Friday, Saturday, Sunday sailings through Easter Monday at this stage.

The Open Studios ArtsTour will be happening on the first two weekends in October (3rd, 4th, 9th, 10th), so stop by our office to pick up a free guidebook to all of the participating artists.

Our major fundraiser for the centre this year is "The Informers" art exhibition. It will be at Hauraki House Gallery, with a gala opening Friday 20 November (time tba), then Saturday 21 and Sunday 22 November from 10.00am – 4.30pm.

Just a heads up that from Tuesday 1 December we will have a letterbox for children to post their letters to Santa. The letterbox will be situated near the archway in the garden at the front of the Samuel James Reserve and taken in each night. It will be cleared every day and all letters with a return address or email address will receive a reply. This will run through Tuesday 22 December, as Santa and the elves will then be busy packing the sleigh and checking on the reindeer. Make this date in your diary... **Christmas in the Park and Santa Parade Saturday 5 December at 3.00pm.** If you would like to have a float or take part in the parade please contact Rita 027 2103 734

Open: 10.00am - 3.00pm Phone: 07 866 8598 or 027 521 5560

Email: coroinfo@xtra.co.nz Website: www.coromandeltown.co.nz

Follow us on Facebook: Coromandel Town Information Centre

COLVILLE COMMUNITY HEALTH CENTRE

2299 Colville Rd, RD 4, Coromandel 3584

Phone 07 8666618. Fax 07 8666619 Our txt number for the clinic is 4448

Mon, Tues, Thurs & Fri 9.00am – 4.00pm / Wed 10.00am - 4pm

GP Clinic at Port Charles – Wednesday 7 October

or the after hours service phone the clinic number 07 866-6618.

Please listen to the message carefully.

The On Call person will be paged by the after hours service.

When we are open you may get an answer phone message if all lines are busy or if we are closed for lunch. You cannot leave us a message.

Please remember - If it's an emergency, dial 111



Kia ora koutou

Hoping spring brings you new energy and a keenness to get out and do things. With daylight saving we have longer evenings which certainly makes it easier to get active at the end of the day.

Just letting you know that we are re-instating the Port Charles clinic from 7th of October. This will be monthly on the first Wednesday of the month at this stage. A downside of the spring season can be an increase in whitetail spider bites. Do be careful and if you have an odd swelling or painful spot get it checked as you don't always know when you have been bitten. Preventative measures like wearing gloves in the garden and shaking out those clothes before you put them on can help with prevention.

For those of you who use Manage My Health (MMH) we would like to advise that from the beginning of October we are ceasing our patients' ability to make appointments to see the nurse on line. One of the reasons for this is to stop people coming for blood tests on Friday afternoons, when we have no way to get samples off to the lab till the following week. We are also working differently now and the triage process helps ensure people are seen in a time that suits their particular need - this includes people wanting blood tests.

In October we are having another GP do some days with us. Dr Geoffrey Norcliffe lives locally and is coming to relieve for Dr Kate over the next little while. As with any locums we have, we really want you to make a time to see him when he is on, as it saves Dr Kate returning to a big back log of patients. Having Geoffrey will provide a great chance for some of you men out there to have the opportunity to see a male doctor too, if that could be helpful for you.

Early in October our final medical student for the year Darrian, finishes at the practice. We have had a great bunch of students this year, and you our patients have been really wonderful in allowing them to work with you whilst they have been here. Thank you so much for making their experience at Colville memorable.

Till next time keep safe and enjoy exploring ways to savour the longer evenings that daylight saving brings us. The team at Colville Community Health Centre.



Mahamudra Centre
for Universal Unity



Fri - Sun 2nd -4th October 4:30pm - 6pm each day
Public Screening of the Dalai Lama's live teaching

Fri - Sun 9th -11th October
Recognising Natural Awareness Retreat with Hedwig Bakker

Fri - Sun 16th -18th October
Emotional Intelligence Workshop

Wednesday 21st October 6:30pm-8pm
Guided Meditation & Chat on Transforming Problems into Happiness
At the Coromandel Citizens Hall

Sunday 25th October 10:30am-12pm
Free Meditation & Community Lunch

8:30am-9am Free guided Meditation Daily

Everyone warmly welcome to all events!

2183 Colville Road 07 866 6851 retreat@mahamudra.org.nz
www.mahamudra.org.nz



COLVILLE HARBOUR CARE
Te Ūmangawhā o Ngā Waka



Potting Party

Sunday 18 October 10am – 2pm

Join us at the nursery wharf road Colville for the famously good time filling pots, listening to good beats and eating yummy food with your friends!

Contact Beth on 031 237 8678 or
chccoordinator@colville.org.nz



COLVILLE STORE NEWS



opening hours: Mon-Sat 8.30am-5pm
Sundays 8.30am - 4pm

Ph 07 866 6805
colvillegeneralstore@gmail.com

Thank you for everyone's continuing efforts with signing in and using the QR code. The store is still very well stocked and we are ready and looking forward to welcoming all our visitors during the school holidays.

Many thanks for your ongoing support. The team.



The Colville General Store is seeking Casual Staff over the summer. Please contact us by email - colvillestore2019@gmail.com so that an expression of interest can be completed, or pop into the Colville Store to fill in the form. Cheers Travis Tupaea (Office & HR Administrator)



Colville Tennis Club AGM

Re scheduled to Sunday 11 October 1pm

All welcome



Looking for a Midwife?

I'm an experienced midwife who loves living in the beautiful northern Coromandel. I provide community primary midwifery care and cover the upper and western side of the peninsula from Port Jackson to Manaia, including Colville & Coromandel Town.

Sheryl Wright

Moehau Midwives

Phone (022) 500 1310

www.birth.net.nz

moehau.midwives@gmail.com





Trap Building Equipment Stolen

Unfortunately our workshop at Waikawau was broken into in early September and people helped themselves to our drop saw, battery drill, pneumatic nail gun and a box of stainless steel screws.

If you've been offered any of the above items, or have any information that may help in its return then please contact us or the local police.

The positive to come out of this incident is the generosity and concern shown from our community – a huge thanks to everyone that has been in touch.

Save Kiwi Month – October

October is Save Kiwi Month and there are so many ways to get involved, like; become a MEG member, sponsor a stoat trap, sign up as a MEG volunteer, buy a trap for your backyard, buy a MEG tee-shirt, make a donation, or, if you own a business you can become a MEG corporate sponsor – drop us a line.

We're also running a Save Kiwi Month Colouring Competition, check out our Facebook page for details.

Weed of the Month – Pampas Grass

Pampas has become very popular with wedding decorators and florists in recent years, but did you know that because it's listed as a noxious weed it's actually illegal to use and transport the plant?

Not to be confused with our native Toetoe, Pampas also grows in large clumps up to 4m tall with fluffy flower heads. However, there are a few ways to distinguish between the two... The older leaves of the Pampas curl at the base of the clump and tend to look like wood shavings. Pampas has a central rib on the underneath of the leaves whereas Toetoe has secondary ribs. Pampas leaves are easy to tear and the fluffy pinkish-white flower head is produced from January to June.

Pampas rapidly dominates disturbed sites preventing native regeneration and provides habitats for mice, rats and possums. The seeds are copious and spread long distances on the wind. You can remove the seed heads to prevent spread, then dig or grub out small plants, remove sizeable plants where possible. You can compost, or leave on site to rot down. Burn or bury any flower heads and cut and apply herbicide to base and leave plants in the ground till the roots have died off.

From the team at Moehau Environment Group info@meg.org.nz www.meg.org.nz

David Wright Wright Contracting Services

General and Heavy Engineering including:

- Welding
- Machining / Fabrication
- Hydraulics
- Machinery Repair / Maintenance

No job too big or small!

Onsite or at my Colville workshop

Phone: (021) 100 2767

Email: dewwrightnz@gmail.com



FREE 2020 Driver Refresher Course

Only 20 spots per course, booking is essential!

60+ this classroom workshop is for you!

- ✓ Road Rules & defensive driving tips
- ✓ Intersection and roundabout rules
- ✓ Medication and driving
- ✓ Rural and urban driving

Light refreshments provided.
No vehicles required and no tests or assessments

Fri 6 Nov
TCDC Community Board Room
11 Monk St,
Whitianga 9.15 - 1pm

Wed 18 Nov
TCDC Community Room
355 Kapānga Rd, Coromandel

Phone Thames-Coromandel District Council on 07 848 0200 to book your space!

Road Safety IS EVERYONE'S Responsibility

Health line for free medical advice about COVID-19 0800 358 5453

Government helpline 0800 779 997

and website <https://covid19.govt.nz/>

Need to talk? Call or text 1737

*Northern Coro Rubbish
Collections for
October*

Tues 6



Tues 13



Tues 20



Wed 28

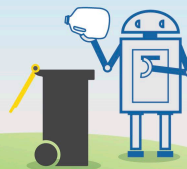


KERBSIDE PLASTIC RECYCLING CHANGE

LOOK FOR THE NUMBER



Only plastics 1 & 2
will be collected
for recycling



RECYCLING REMINDER

*TCDC no longer collect plastic types
3 - 7.*

*ONLY plastic types 1&2, tins,
paper & cardboard go in the green
wheelie bins. Bear this in mind when
you are shopping.*



Are you shopping with awareness ? Sometimes we have to look **EXTREMELY HARD**. To read these little symbols



Goods with either of these are the **ONLY** things recyclable in this area.

**Coro Refuse & Recycling
Centre.**



Goldmine shop open

Please Facebook us for guidelines for recycling.

Tuesdays & Thursdays

11 - 4.30

Saturdays & Sundays

11 - 5.30

525 Hauraki Rd, Coromandel.

07 866 7616

FARM SHOP
COLVILLE VILLAGE



OPEN ALL OCTOBER
CLOSED MONDAYS
9:30am to 4pm
Pop in for a cuppa great coffee, sweet treat, hearty lunch, quick snack or simply a place to put your feet up and enjoy an ice-cream in the spring sunshine.
We are looking for Staff to help us over the busy summer period so pop into the shop to see Cathy or call us on 07 8666937



100% HEREFORD BEEF BURGERS * HOT CHIPS * COFFEE * BAKING * PICKES 'N' JAMS * LOCAL ART * REAL FRUIT ICECREAM * MEAT

100% HEREFORD BEEF BURGERS * HOT CHIPS * COFFEE * BAKING * PICKES 'N' JAMS * LOCAL ART * REAL FRUIT ICECREAM * MEAT



LIKE US ON
FACEBOOK



*** Yes we are open for business ***

Winter opening hours are as follows

CAFÉ—Wednesday to Sunday 10am—5pm

RESTAURANT—Wednesday to Sunday with bookings only

Next darts game SATURDAY 31 OCTOBER 6pm

CLOSED = MONDAY & TUESDAY

ph 07 8666 614

Relax & Revive Coromandel

www.relaxcoro.co.nz

Certified Massage Therapist

Relaxation Massage

Jan is working from the tranquil surrounds of the Tangiario Kiwi Retreat, Port Charles

By appointment

Email: info@relaxcoro.co.nz

Ph 021 268 6198



Colville Bay Pre-School

Haere Mai!

Bring your children to Pre-School for fun & learning!



We are open Tuesday to Friday 9am to 3pm during School terms.

20 Free ECE hours for 3 years and over. WINZ subsidies available.

Term 3 ends 25th Sept. Term 4 begins 13th October. On Wednesday mornings we have a Parents & Toddlers group while our 4 & 5 year olds are at Bush Kura.

We welcome new enrolments. Come and meet us

Phone – 07 8668 319 or 021 156 5185 Email – colvillebay.elc@xtra.co.nz

'Many thanks to all the folks that helped make our recent Pizza Night Fund-Raiser such a success, from all of the Colville Bay Pre-School team'

HIMALAYA SHOP

Hi folks, We will be open most weekends from now on, now that Spring has sprung.

Hours from around 10am - 3pm

Cheers Rob & Nette

ph 07 866 7224 shop 07 8666 865

021 139 7838 Anette

The Forager's kitchen

2314 Colville Road, Colville

Closed Tuesdays

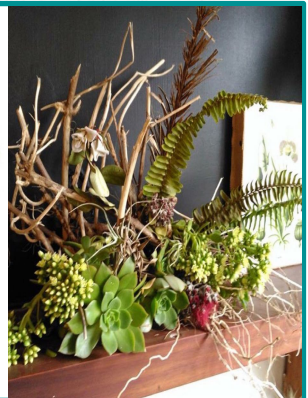
theforagekitchen@gmail.com



BYO Licensed

027 3666 986

021 186 3631





**COLVILLE LAWNS
PROPERTY
MAINTENANCE**

Seamus

021 0264 1000



**D & K
HOME IMPROVEMENT
HANDYMAN**

Ph. David Porter 027 224 8925

email: davidkim@colville.org.nz



Bryan: 021 799 056

www.gardentools.nz



Joanna: 021 739 398

LIFETIME GUARANTEES



White Star Honey

Producing Local Delectable Honey

Available from Colville General Store, Coromandel Meat Keeper or direct at White Star Station / Colville Farm Holidays. Contact Tellic 021 770 382 or email wshoneynz@gmail.com

**Self Service Coin Operated
Washing Machine and Dryer
OPEN 7 days**

Available at White Star Station / Colville Farm Holidays 2140 Colville Road, Colville Coromandel (2 minute's drive, 1.7km South of the Colville General Store towards Coromandel Town)

Follow the signs at the front Gate.

\$4 per wash \$4 for 45 minutes approx drying time.

Takes \$1 and \$2 coins.



WHATSON IN THE NORTHERN COROMANDEL

Regular events

Enliven - every Thursday 10 am

Yoga - every Tuesday Colville Hall 10am.

Sunset Yoga - every Thursday With Vanessa @ Colville School Hall. 5 - 6.15pm

Daily Meditation Free @ Mahamudra Centre 8:30am-9am (guided)

October events

Fri 2 Employment services advocate council chambers, Kapanga Rd 2pm

Fri 2/4 Public Screening of the Dalai Lama's live teaching 4:30pm - 6pm each day

Fri - Sun 9 - 11 Recognising Natural Awareness - A weekend Retreat with Hedwig Bakker @ Mahamudra Centre

Sat 10 Youth Sailing @ Otautu Bay 12noon contact Ben 022 1304 455

Sun 11 Colville Tennis Club AGM 1pm

Mon 12 Term 4 starts

Thurs 15 TCDC Rates due

Fri - Sun 16 -18 Emotional Intelligence Workshop @ Mahamudra Centre

Sat 17 Election Day @ Colville School

Sun 18 Colville Harbour Care Potting Party at CHC nursery, Wharf Rd 10am-2pm

Tues 20 Panui Deadline

Wed 21 Guided Meditation & Chat on Transforming Problems into Happiness at the Coromandel Citizens Hall 6:30pm-8pm

Fri 23 Labour weekend 360 Ferry begins service

Sat 24 Youth Sailing @ Otautu Bay 12 noon contact Ben 022 1304 455

Sun 25 Free Meditation & Community Lunch @ Mahamudra centre 10:30am-12pm

Fri 30 Show Me Shorts, Let's Get Physical @Colville Hall 7.30pm

Sat 31 Darts night @ Tangiaro 6pm

November events

Fri 6 Show Me Shorts, The Sampler @Colville Hall 7.30pm

Wed 11 First Aid Course @ Colville Hall 9am

Wed 18 Free 2020 Driver Refresher Course Coromandel

Always find time

for the things

that make you happy to be alive