

PĀNUI

-www.colvillejunction.co.nz—Newsletter for the Northern Coromandel



It's festival time again in Colville!

After postponing the festival at Easter we are lucky to have it on over Labour weekend.

And the Re-fashion show is on too!

See pages 6-9 for more information

Editor

Hi everyone,

Finally spring is here and hopefully it will be less cold and wet, especially over Labour weekend.

Nathan.

PĀNUI NOTICE

If you'd like to be part of the 'reminder' list for all contributions, please

e-mail panui@colvillejunction.co.nz.

Send us your community news, stories, tips, drawings, discoveries, dreams and advertisements.

Guidelines for contributions

Contributions welcome, but may not always be used. We may also edit them for clarity and space.

Email your news, notices, advertisements, jokes, recipes, dreams & handy hints.

Please send in Word or Open Office (not PDF's). Or post or drop contributions into CJ.

Deadline for the next month

Tues 18th October

For an electronic copy (which comes in colour), email: panui@colvillejunction.co.nz with 'subscription' in the subject line.

For a mail copy: email/phone us. Subscription cost for printed copies is \$25.00 per annum.

If you would like to support

Colville Junction,

you can donate online:

38 9009 0798558 00

(and put 'donation' in the reference field)

or contact Larisa

manager@colvillejunction.co.nz

Contact Information

Phone: 07 8666 920

Email: info@colvillejunction.co.nz

2311 Colville Road, RD4,

Coromandel 3584

www.colvillejunction.co.nz

Hours:

Tues, Wed, Fri 10am - 3pm

Closed for lunch 12.30 - 1pm

Closed Mon & Thurs

Manager - Larisa Webb
manager@colvillejunction.co.nz
021 258 8037

Manager's Assistant - Anne Mountjoy
assistant@colvillejunction.co.nz

Financial Administrator
Nicole McCauley
finance@colvillejunction.co.nz

Colville Harbour Care Nursery
Sassy Acorn
nursery@colvillejunction.co.nz
028 436 0193

Youth Group
Danielle Van Resseghem
& Nathan McCauley
colvilleyouthgroup@gmail.com

Pānui editor - Nathan McCauley
panui@colvillejunction.co.nz
Youth Community Development Coordinator Maria Dove
youth@colvillejunction.co.nz
Moehau ki te Moana Coordinator & CJ Grant Writer - Cassidy Connor
cass@colvillejunction.co.nz

Moehau ki te Moana Coordinator
Vanessa Edelsten
vanessa@colvillejunction.co.nz

Colville JUNCTION

would like to thank
our funders and supporters

Colville Junction Main Funders



Colville Junction Funders



Colville Junction Supporters



Want to see strong vibrant
communities in the
Northern Coromandel Peninsula?

Got ideas and keen to be a voice for your community?

Colville Junction is welcoming interest from people wanting to join our great Trustee team.

For more information contact Janet on palmer-janet217@gmail.com



COLVILLE YOUTH GROUP

Youth Group will be happening in Term 4. We are currently planning what exciting activities we will have! We will share information on this soon through the school and email or please feel free to contact Dani directly on colvilleyouthgroup@gmail.com or phone 027 571 3589. Dani, Youth Group Coordinator



Youth Group is offered free to all Colville Youth aged 6 and older.

Youth Music Performance Night



The Forager's Kitchen
Friday the 11th of November
Starts 5.30pm.

Any young people (aged 12+) wanting to perform, please contact Maria youth@colvillejunction.co.nz



White Star Honey



Producing Local Delectable Honey

Available from Colville General Store or direct at White Star Station / Colville Farm Holidays.

Contact Tellic **021 770 382** or e-mail wshoneynz@gmail.com

Self Service Coin Operated Washing Machine & Dryer

OPEN 7 days

Available at White Star Station / Colville Farm Holidays 2140 Colville Road, Colville, Coromandel (2 min drive, 1.7km south of the Colville General Store towards Coromandel Town)

Follow the signs at the front Gate.

\$4 per wash / **\$4** for 45 min approx. drying time. Take **\$1** and **\$2** coins.

Dear friends of Adam Walter

As-salamu alaykum, hello.

Please join us for a memorial service for Adam Henry Walter 11/05/1950 - 09/10/2021 Nurse, father, brother, uncle, grandfather, friend, motorbike rider, musician, lover, cousin, cheeky trickster, quaker, Buddhist, builder, volunteer, song writer. Intelligent man.

DATE: Sunday 9 October 2022

LOCATION: Colville Hall

TIME: 11.30am (start 12pm), please let people know.

This day marks a year since Adam’s passing. There will be a eulogy, songs and a few readings. After this people are welcome to say something brief. Light refreshments will be served after the ceremony. Bring a plate if you like.

We look forward to welcoming you to this celebration of Adam's life. Kind regards,
Layla Walter (daughter), Aladdin Jones (nephew) and Sally.

Any correspondence please email directly to laylawalter@gmail.com

DONATIONS for those wishing to give something:

Having lived a life serving communities with his skills in building, cooking and nursing, we feel that Adam would like you to know of the amazing network of Colville’s volunteer organisations. In particular please donate to The Colville Project. Account Name: Colville Community Health Trust Account Number 38-9002-0885683-01 Reference: building fund Code: Adam



Building Community Wellbeing



Wellbeing



Education



Housing



Recreation

Community Hui ! 19th November 22

Join us at the
Colville Hall from 10:30am to 12pm
or at Waikawau woolshed from 2pm to 3:30pm.

Come and hear about the latest news
Come and meet the architecture team
Come and tell us your idea and feedback

TCP is HIRING!

The Colville Project is looking for an enthusiastic "funding person" who has skills in communication and marketing. She/He would be looking for sponsors, investors, grants and funders to move our amazing community project forward. This contract could be up to 8 hours per week for 10 months. Can work remotely.

Please contact Anne at thecolvilleproject@gmail.com or call 0224195521.

Application closes the 20th of October 22 at 1pm.



All events are held at Colville Hall

PROGRAMME

Colville Sings Swing & Blues

Friday 21st October 7pm

\$25 - 12yrs up, please.

Coffee/Tea/Cakes available at half time - bring koha

Tickets are essential as this night sells out quickly.

Dress up ART DECO - prizes for the best dressed.

Thank you again Hike & Bike & Driving Creek Railway.



The Big Music Night

Saturday - 22nd October 6pm

\$25 / under 16yrs FREE

First ever Burritos night at the Colville Festival!!

Forager's Kitchen are cooking! They have been perfecting the recipe to ensure you are well fed

and spiced up for the night of dancing ahead. Not to be missed! Also a vegetarian option. Deserts too if you need a little sweetening .

All food will be served in the Hall.

Cash only: \$15 meal / \$5 dessert.

(A low alcohol event - No boxes of beer or bottles of spirit are allowed in the hall-thanks)



The Great Colville Re-Fashion Show

Sunday 23rd October 7pm

SOLD OUT - a fundraiser for the Colville Project.
More info to be announced in the October issue.
We can't wait to see you all having fun with us.
Ella, Steve and The Colville Junction (CJSC)
AND...



A Festival Matinee - The Re-Fashion Show plus Colville Sings

Monday 24th October 11am

\$20 Adult / Under 16yrs Free - children are most welcome!
(For those of you who missed out on tickets for either night.)



WORKSHOPS

Play with Clay with Frederick Church & DCR Crew

Saturday 22nd October 2022 10am - 12pm

This has become a tradition, great fun for all ages.
Sponsored kindly by DCR

Sound Engineering with Matt Sephton

Saturday 22nd October 2022 12.15 – 2.15pm

PLUS 2.30-3.30pm Stay for the sound checking of the bands.
\$50pp (online ticket fee applies)

Learn all about live sound mixing and getting a big, clear and punchy sound.



Candle Making with Josie Carson

Sunday 23rd October 2022 10am- 2pm

\$30 Adult / \$15 Child (online tickets fee apply)

All materials provided but you are welcome to bring any old candles, fragrance oils, jars. Under 10yrs bring an adult.



Flax Weaving Workshop with Briar Van Dort

Sunday 23rd October 2022 1.30 - 3pm KOHA

In this weaving workshop we'll make a Collaborative Rose Wall Panel;
Under 9yrs bring an adult.



The Big Music Night Line-Up:

The Solomon Cole Band



The Solomon Cole Band are a 5 piece multi gendered, multi ethnic mix of musicians from the bohemian paradise of Waiheke Island. They've opened shows for Martha Davis ; The Motels (US), My Baby (Europe), The Animals (UK) and The Supersuckers (US). Their music and stage show is a high energy burst of classic soul and blues music set to trance type

backbeats, electrifying guitar and voodoo like rhythms and multi layered female vocals that comes wrapped up in one little rock'n'roll bundle of energy and style.

Krispy & The Pooch

Kriston Batistic (aka Krispy) and Simon Townsend (aka The Pooch) met in the squalor of



a decaying student house in a wealthy suburb of Auckland five years ago. To fend off the rats, the boys were forced to come together to produce wall-shaking old-school hip-hop. Having garnered radio play across New Zealand, the project came to an end when Krispy moved abroad to further himself as a musician in the renowned scene of Berlin. Like a real good boy, The Pooch was soon to follow. Whilst developing their sound, the group collaborated with high-quality musicians from all around the globe.

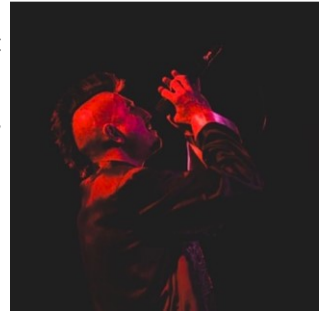
Influenced by all types of music, what glues

all this together is Krispy's vocal - a bluesy baritone who can belt and occasionally raps. With The Pooch's inhuman ear for production, each track has been elevated to that special realm, the songs imbued with digital sonics that are both invigorating and mesmerizing.

Silk Satin Suede

Silk Satin Suede, aka Max Duncan, is an artist aiming to balance the Beauty with the Darkness in music, performance art, film and fashion; fusing them together in his emotive avant-garde style.

Silk Satin Suede has collaborated with a brilliant catalogue of artists over the years, such as composer and multi-instrumentalist, Andrew Denison; film director, James Grimley; and dancer, Tessa Brown.



DJ Tiny Diva



Tiny Diva is inspired by a global sound that traverses the funky to the bizarre. With beats to move your body and soul.



DJ Hi Boy Coop

DJ Hi Boy Coop was raised on Disco, twisted by Punk, slammed by Hip Hop, swung by Samba and has been totally seduced by the sonic strains of Breakbeat and thumping Bass music. Hi Boy Coop gets to open the Colville Big Music night and all the things shall be sweet and they shall be groovy.

Tickets for sale at the Colville General Store (07 8666 805) and online at www.colvillejunction.co.nz

For all enquiries call/text Steve 021 711 489 or Ella 027 487 5131



Hello everyone,

The time is almost here! The Great Colville Re-Fashion Show will take place on 23rd October, 7pm at the Colville Hall, as part of the Colville Festival. Tickets are sold out but there is another opportunity—on Monday 24 Oct at 11am there will be the Re-Fashion Show plus Colville Sings. For those of us organising it, there is much to do! We need to know exactly how many models we will have on the night, so if you've committed to entering an outfit, please get in touch with Emily at the Trust to confirm your attendance. It's important that we have enough participants, otherwise there will be no show! If you're pressed for time, don't let that deter you - there is a competition category for 'Most Wearable', so an artfully put together op-shop outfit will show the world your belief that clothing can have that beautiful second life that it, and our planet deserves. We would also like to remind everyone of our support for the visiting health practitioners who come to the clinic to offer their services to our community. These services will remain available as long as the demand for them is there, so to help everyone get the most out of this opportunity, we will be making use of our Facebook and website to post information on dates appointments are available. Another great reason to follow our FB page!

Colville Community Health Trust

Annual General Meeting

12th October @12pm

War Memorial Hall, Colville





All staff and students have been celebrating Te Wiki o te Reo Māori (Māori Language week) by taking on the challenge and ensuring te reo Māori is integrated into our daily learning. We start each day with a karakia, sing waitā together and we have been brushing up on our number knowledge using the Reomations. Kia Kaha Colville tamariki! This year is extra special as 14 September marks the 50th anniversary of the Māori Language Petition, an event that led to many of the kaupapa we have today, including Te Wiki o te Reo Māori. You may have already seen the beautiful te reo books on display in the Colville School Library. Please come and share them with your tamariki. Let us know if you would like to borrow books and we can register your whānau with the school library.

As part of the celebration Kereru Class retold part of the story of how Maui Slowed the Sun. The students created their own illustrations and worked together to retell different parts of the story. We were inspired by the Maui book written by Peter Gossage.



All our students have been learning new skills and with the help of Gavin from Hike and Bike, Colville. We have been learning to do a basic safety check on the bike before riding

and how to fit our helmet safely. Gavin has given up his Friday afternoons and lent us some bikes and helmets so that we can prepare ourselves for a special Mountain Bike event in Coromandel in October. It's been really cool to see the student's skills and confidence progress. Soon, we will be ready to hit the trails together! Thank you Hike and Bike Colville for your community support!



Illustrated by Kaitlyn

Position:

Ka ora Ka ako Cook, Fixed Term, Part Time, Support Staff member at Colville School.

This is an exciting opportunity to work in the Colville School Community to provide healthy nutritious kai and ensure equitable outcomes for the tamariki at Colville School. If you have a passion for food and a commitment to sustainable practices, then you could be the candidate we are looking for.

The role will be for **15 hours per week at the Living Wage Rate**, during school term time. The position will start in Term 4 2022. The start date and days to be worked will be negotiated with the successful candidate. This is a fixed term position until December 2023. **Applications Close 4pm Wednesday 5th October.**

The ideal candidate would have experience of working within the hospitality industry and have key skills in Communication, Health and safety, Budgeting and Resource management.

Please contact the School Principal to find out more about the role and request an application pack - principal@colville.school.nz tel-07 866 6815 mob-021 091 20434. Inquiries by phone or email are warmly welcome.

COLVILLE BAY PRE-SCHOOL

Charity Inc.



Te Umangawha taku whare ako.
Ka whaangai, ka tupu, ka puawawai
to nurture, to grow, to blossom



Haere Mai! Welcome!

We welcome tamariki ages 0-6 to our vibrant, community owned early learning centre on the shores of Tikapa te moana, Cabbage Bay. Highlights this term include lots of adventures in the Ngahere and to the Foreshore, collecting shells, wool and other interesting materials to collage and create with, thanks for the donations whaanau!

Science and discovery continue with lots of baking in the kitchen and also outside experiments with dye, baking soda, sand and water! We have started weekly school visits with our four year olds, joining the 'Garden to table' Programme at Colville School, helping harvest vegetables, study flowers with our magnifying glasses and looking for bees...

We have also been moving and revamping our gardens. Today the children planted out our Spuds and Onions which we have been sprouting for weeks, digging them into our raised garden beds, and Zara and Emilia made a bean teepee, tying together Harakeke stalks, then carefully poking runner-bean seeds all around. We can't wait

to see what this looks like in a few weeks! Hopefully we will also have our new fence up soon, with all the parts and volunteer logistics coming together, the old fence going down the road to the Colville Cafe :)

Professional Development: we are excited to be hosting Lynn Rupe, an Early childhood educational leader in our centre on October 17th for a workshop on 'Learning stories'. Local ECE teachers and parents and whaanau are welcome to attend. Please get in touch if interested.

*Just one more place currently available on our Coromandel mini-van
Tuesday, Wednesday & Friday.
20 free hours for 3 year olds + and WINZ subsidies available.*



Open Tuesday - Friday 8.45am – 3pm.

Term break inclusive.

Call or email for more information or to arrange a visit.

Phone: 022 645 3272

seniorteacher@colvillebaypreschool.co.nz
2391 Colville road (behind Colville School)

www.colvillebaypreschool.co.nz

Want to support our wonderful centre?
Donate online: 38-9005-0803508-02.



COLVILLE COMMUNITY HEALTH CENTRE

2299 Colville Rd, RD 4, Coromandel 3584

Phone 07 8666618. Fax 07 8666619 Text number for the clinic is 4448

Mon, Tues & Thurs 9am – 5pm/ Wed 10am - 5pm/ Fri 9am - 4pm

For the after hours service, phone the clinic number 07 866-6618.

The On Call person will be paged by the after hours service.

Please remember - If it's an emergency, dial 111



Manage My Health is a great way to communicate with your team. However we do not advice that you use it for acute situations. If you have a medical need which needs attention in the next day or so, please call the clinic (or 111 in an emergency).

We say farewell to Nicole Keatley for a few months whilst she takes maternity leave. We wish Nicole & Ross all the very best for the start of their new journey into parenthood and we look forward to meeting the new addition.

Amy Archer joins us for a couple of days per week to cover for Nicole. Amy will be carrying out BT's and BP's and all of the behind the scenes jobs that keep our clinical team supported and in check.

Thanks to those who have gone the extra mile for us this month – in particular, David Porter, Dave Ward, Spike Mountjoy and Colin Caldwell.

St John has donated some stickers for child car seats. In the event of a vehicle accident the child can be identified by the information written on the sticker and the NOK contacted. You can

collect your sticker from reception.

Remember to let us know you have arrived at the clinic for your appointment by telephoning or coming in to reception. You are very welcome to come and wait in our waiting room and of course, it's lovely to see you.

As always, we welcome your feedback in our changing times. All feedback, including suggested improvements is greatly received and can be emailed to practicemanager@colville.org.nz.

Until the next time.

Colville Community Health Clinic
(07) 8666618

**Nau mai haere mai ki te ako reo Maaori
MONDAYS 5-6.30pm Colville School:**

These classes are well underway and I feel like we are learning so much.

Thank you Brandon. New-comers welcome to join us.

Colville Volunteer Fire Brigade

Kia ora, Tena koutou katoa.

After a challenging two years for our local brigades in the northern Coromandel, it is refreshing to have the Covid mandate clearance, ensuring we get the management and training of our personnel back on track for the approaching summer season. I would thank all our Colville crew (operational and support) for your diligence and faith in providing continued service to our community during that time.

Colville Volunteer Fire Brigade AGM held Tuesday 30th August was a well-attended role call. It was a pleasure to note that the brigade are; fiscally sound, substantially well-equipped, training comprehensively for the future and maintaining a diverse and enthusiastic membership. A special pleasure to announce six interested new local recruits working through their applications and we look forward to welcoming them into the brigade ranks over the coming weeks.

Elected officers for the forthcoming year are: CFO Bazza Ross, Deputy CFO's Doug Morrison and Spike Mountjoy, Secretary Helen Curtis, Treasurer Ngaire Evans. Colville Brigade registered 16 members with 2 seconded from Port Charles and 6 in the process of registration. Mr Ross reiterated not everyone may want to attend an MVA or run up a hill with a fire hose. Traffic control, Radio Ops,



Health, Safety and Welfare, marshalling Helicopter LZ, Pump operators, Drivers, Equipment maintenance are just some of the rolls necessary for the coming

summer season.

Colville Brigade projected community support projects include: (AED) at the Post Office, Fire Station expansion of facilities (new ablution and wash-down block) substantial donation to Colville Pre-School professional development, supportive donation to our volunteer run Post Office, Garden to Table programme at Colville School, Rapid Antigen Test Kit distribution centre.

Recent activity: Evacuation scenario with Colville General Store. A reconnaissance exercise was held with Colville, Port Charles, Kennedy Bay and Coromandel tanker all off-road driveways in Colville, Waitete, and Tuatēawa to see if we could get our appliances in to respond during emergency.

Fire Permit season is fast approaching so a reminder that when indicated, you can get a permit online at www.checkitsalright.nz or call 0800 658 628.

“E hara taku toa i te toa takitahi, he toa takitini”

My strength is not as an individual but as a collective

Bazza Ross. CFO, Colville Volunteer Fire



COLVILLE HARBOUR CARE
Te Umangauwhā o Ngāi Whaka

The Moehau ki te Moana team want to send out a huge thank you to all the wonderful volunteers that helped make our two Potting Parties with the Colville Harbour Care Nursery so successful this month! We managed to fill nearly two huge wicking beds with small pots ready for seed sowing.



Our next generation of native plants will soon be sending up shoots! Most of these seedlings will be planted along the waterways in our community next winter as part of our project

Thank you for helping us create such fun and happy vibes for both events. We really appreciate the continued community support for these big days of sunshine and mahi. We also wanted to thank DJ Hi Boy Coop for awesome tunes at the first potting party and Meryl Johnson for hooking us up with power. Thank you to the Hereford 'n' a Pickle and Forager's Kitchen for the delicious kai. Colville Harbour Care is hosting another wonderful potting party at the nursery on Saturday the 29th of October.

Stay tuned for more upcoming events hosted by Moehau ki te Moana and as always please don't hesitate to drop us a line at cass@colvillejunction.co.nz and vanessa@colvillejunction.co.nz



FIRST AID COURSE IN COLVILLE



Friday 25th November 22
9am – 3pm (refresher) -5pm (Full)
Colville Hall

\$165 – FULL COURSE
\$140– REFRESHER

Register with Colville Junction, pop in, call 07 866 920
or email assistant@colvillejunction.co.nz



*Thursdays 11am - 1pm RATS
distribution from the Colville
Hall.*

*No need for a Request number -
just call in and pick some up.*

Lena



COLVILLE STORE



Ph 07 866 6805
colvillegeneralstore@gmail.com
Mon to Sat 8:30pm to 5pm
Sun 10am to 4pm

Thank you for wearing a mask into the store, we are glad to now be able to relinquish them. Along with many others in the community, we have had a rough winter with sickness, among our staff and their families. To our staff, **a big thank you** for your support in helping to keep the store open for the community during these testing times.

*We still have **positions for a permanent part time and casual workers.** If you think this could be something you would be interested in please contact us for a Job Description.*



Do you want to rent out your home or have a holiday away? Call out for Colville accommodation or house swap offers in early January 2023. (Ideally 3-6th or longer). Jamie and Layla are having a wedding in Colville on 4 & 5 Jan and have many friends who are looking for places to stay. If you have a home in the area and are willing to rent it out, or negotiate a house swap please get in touch with Layla ph 0276900117 or email laylawalter@gmail.com



The Colville Tennis Club

Incorporated Society Est 1905



Enjoy our community facility, participate with a koha

Become a member \$20/year
Become a friend of the Club \$10/year

Or donate : 020304-0011243-00

Thanks for using the resources appropriately and tidy up afterwards



Keep the net and the fence clear (don't climb nor lean)

Keep the racket away from the asphalt



First Sunday of each month ; join us for a social working bee on the tennis court 2 to 4pm (tidying up, clearing the weeds, rebuilding the clubhouse floor...)

Come to play tennis anytime, enjoy the facilities and play with your kids on the court!



It is the official New Zealand 'Save Kiwi Week' from the 10th -16th of October. While every week of the year is a 'save the kiwi week' for the Moehau Environment Group team (MEG); having an official week of observance, to advocate, celebrate and fundraise for Aotearoa's most famous taonga, the kiwi bird, really highlights the plight of our national icon. With such a high beam focus on kiwi this month, we are able to share our deep appreciation and love for our most unique native bird species and their natural habitats, as well as broach the imminent risks of losing more to the voracious appetites of predators. Rats, cats, stoats, weasels and possums have been the predominant concerns but unfortunately now after a long absence, ferrets have also been making a resurgence. The reappearance of ferrets in our precious lands is deeply worrying and a matter of urgency for our trapping team here as ferrets like to kill for more than their immediate meal; they also like to kill for food storage purposes, a habit which can truly devastate an area of native species at alarming rates.

Our country was once covered in birds. It has been said that at one stage, it would have been difficult to walk without disturbing a bird's burrow due to their being 12 million kiwi alone. By 1998 however, their population was below 100,000. By 2008 it had declined further to roughly 70,000 and today even with all our efforts it is estimated to be around 68,000. Of the 150 species of native birds in New Zealand, four out of five bird species are in trouble, some being close to extinction. Sadly the population of kiwi declines by 2% every year in unmanaged territories which is why it is so vital to do what we can in our protected areas.

One example of the protected locations MEG created is the Kiwi Sanctuary, a large stoat trapping network which began in 2005. There were only 70 kiwi estimated within the Sanctuary at its inception and by 2015 MEG found that kiwi numbers had already increased by 36%. As a community here we can be proud to say that where we live is "Kiwi Country". We own this title because the northern part of the Coromandel Peninsula has the largest predator controlled kiwi habitat on New Zealand's mainland. Sadly it seems the family dog has recently become a dangerous kiwi predator on the Coromandel, with a disappointingly high number of kiwi deaths caused by dogs over the last couple of years.

This month, in efforts to nurture our kiwi bird population, MEG are carpooling down to Pauanui to attend a Mustelid Summit held by Predator Free Hauraki Coromandel Community Trust. Dr Andrew Veale, a wildlife geneticist and ecologist from Manaaki Whenua/ Landcare Research is the first person in the world to unravel the stoat genome and is an advisor for mustelid control. Olivia Rothwell who is the Research and Development Project Manager from Predator Free New Zealand 2050 Limited will speak about new tools that will help achieve the elimination of possums, rats and mustelids without the use of fences. Sara Smerdon from Mahakirau Forest Estate, Frank Lepera, the Stoat Operations Manager from Te Korowai O Waiheke and Emma Whitton from the Shakespear Open Sanctuary from Auckland Council will also be presenting as a panel facilitating group discussion. We will keep you updated on the exciting new developments shared during this wānanga in next month's issue.

Have a great month everyone! Noho ora mai! Genevieve Morley, MEG's new communications manager. I am a Coromandel local and have been doing a lot of trapping over the last few years working for Project Kiwi Trust servicing hundreds of traps each month. I'm a mother, beekeeper, and all round eco-enthusiast with a menagerie of pets and two hand reared parakeets

that I hang out with every day. I'm really excited to have this opportunity to engage with the community here in my hometown and I look forward to meeting and chatting with you all in the course of this new role.

Contact us at info@meg.org.nz or make a donation by visiting our website www.meg.org.nz

UCLA CONSERVATION REPORT

FEATURING Dr Jane Goodall, Predator Free NZ and poison 1080 To those individuals hoping to be on the local Community Board, UCLA request you give sincere attention to humane wild animal control without the proviso...“we don't want to use a cruel poison but until something better comes along we just have to”. For those who say they wish to represent the “quiet voices” in the community, we say the quiet voices are the status quo who do not want to be seen in public demanding cruel deaths for sentient creatures. Finally we can all read (especially soon to be elected representatives) the ground-breaking international research from the Dr Jane Goodall foundation that condemns the poison focus of Predator Free NZ as “unrealistic, unnecessary and unethical.”

Dr Jane Goodall's position:

During lectures in New Zealand, Dr. Jane Goodall was asked repeatedly about her thoughts on the killing of introduced predators. “For many years I have been devastated by the cruel methods used to kill predators because of their supposed danger to livestock or human life – such as leg hold traps or poison baits. Only too often the targeted animals die slow deaths in extreme pain. Moreover, other non-target animals are often killed in the same way.

“The campaign in New Zealand to exterminate all non-native animals in order to save the country's unique indigenous species from invasive species who were introduced, intentionally or unintentionally, relies on the use of poisons which are known to cause intense suffering and agonizing deaths. As I read more and more about this plan I became increasingly concerned.

“Dr. Koen Margodt is an independent scientist who I asked to sit on the Ethics Committee of the Jane Goodall Institute . And this paper is the result of his intensive research into the ethics of the New Zealand campaign, the impact of these poisons on the ecosystem....”

Dr Koen Margot writes “Unfortunately, the PF 2050 poisoning campaign has a one-sided focus on introduced species in order to conserve native species. The government of New Zealand has embarked on an unethical, unrealistic and unnecessary project by aiming to completely eradicate possums, stoats and rats from New Zealand by 2050. Their poison strategy creates intense and prolonged suffering for millions of animals. This suffering goes beyond the targeted animals and includes members of endangered species and companion animals, in particular dogs.

“The PF 2050 strategy fails because it does not manage to (i) permanently remove the targeted animals, (ii) reinvasion from other areas and (iii) the replacement of introduced species. Therefore, this strategy results in a never ending cycle of suffering of animals, high financial costs and environmental costs. The use of the insidious 1080 poison and its twin poison brodifacoum, must stop. I call for an immediate moratorium on these poisons.

“Instead, the New Zealand authorities should focus on defining key biodiversity areas for conserving endangered species. Research needs to be undertaken to determine what areas need to be conserved and where habitat needs to be protected or restored. The detrimental impact of humans, in particular through intensive farming, must be addressed.”

On a final note UCLA would like to heartily thank all Community Board representatives working with the leadership of astute Peter Pritchard

Kia manawanui Reihana Robinson

WAIKAWAU BAY Professional and qualified arborist services



Tree removal and pruning

Call for a free, no obligation, quote

Surya 0225670252



TREE SERVICES

Northern Coro Rubbish collection for October

Tues 4 

Tues 11 

Tues 18 

Wed 26 



Coro Refuse & Recycling Centre

Goldmine Shop

Wednesday & Friday 9.30am - 3pm
Saturday & Sunday 9.30am - 4pm

525 Hauraki Rd, Coromandel
07 866 7616

Handling rubbish, including recyclable items, illegally dumped at the gates of our Refuse Transfer Station (RTS) outside of hours incurs a cost for all our district ratepayers that contributes to driving up the annual rates bill.

David Wright

Wright Contracting Services

General & Heavy Engineering including:

- Welding
- Machining/ Fabrication
- Hydraulics
- Machinery Repair/ Maintenance

No job too big or small!

Onsite or at my Colville workshop

Phone: 021 100 2767 Email: dewwrightnz@gmail.com





Mahamudra Centre
for Universal Unity

2183 Colville Road
Ph 07 8666851
www.mahamudra.org.nz



Upcoming Events

Retreats

- ◇ October 21-24 How to Meditate silent retreat with Hedwig Bakker
- ◇ November 18-20 Waking Up to the Moments of Your Life with Hedwig Bakker
- ◇ November 25-27 Spring Refresh Women’s Retreat with Wild Stillness Retreats

“When your mind is narrow, small things agitate you very easily. Make your mind an ocean” – Lama Yeshe



Christina Wu,

*BHSc (Acupuncture & Chinese Medicine ACC registered acupuncturist
Chinese Medicine practitioner*

Taichi teacher : taichi class on Monday 4 pm

16 Victoria Street, Coromandel (Tuesday to Friday)

Colville Community Health Centre on Mondays.

Phone: **021 1134 768**

Email: **christinawu121@gmail.com**

www.corocommunityacupuncture.co.nz

Looking for a Midwife?

I’m an experienced midwife who loves living in the beautiful northern Coromandel. I provide community primary midwifery care and cover the upper and western side of the peninsula from Port Jackson to Manaia, including Colville & Coromandel Town.

Sheryl Wright

Moehau Midwives

Phone 022 500 1310



David’s Handyman & House Painting Services



Before

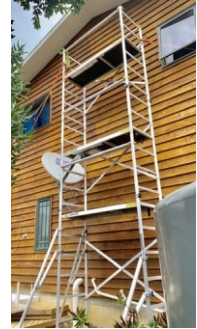


After

Interior & Exterior House Painting
Rot & Gib Repair
Water Blasting or Soft Wash
Deck Repairs & Staining
And much more...

Free Quotes

**Contact David Porter Ph: 027 224 8925
email: davidkim@colville.org.nz**



**FARM SHOP
COLVILLE VILLAGE**

OCTOBER

Tuesday – Sunday 9am – 4pm

Pop in for a cuppa great coffee, sweet treat, hearty lunch, quick snack or simply a place to put your feet up and enjoy an ice-cream in the spring sunshine. We look forward to the festivities of the Colville Arts Festival over Labour Weekend www.colvilleartsfestival.co.nz

**100% HEREFORD BEEF BURGERS * HOT CHIPS * COFFEE * BAKING *
PICKLES 'N' JAMS * LOCAL ART * REAL FRUIT ICECREAM * MEAT**

2318 Colville Road, RD4 COROMANDEL 3584
herefordnapickle@gmail.com Cathy Ward 07 866 6937
www.kairamatipolledherefords.com



1299 Port Charles Road,
Coromandel
07 866 6614



Info@kiwiretreat.co.nz
www.kiwiretreat.com

Accommodation open 7 days

Café & Bar is open from 10am to 5pm, Wednesday to Sunday

Closed Mondays & Tuesdays

Restaurant open with bookings only



Himalaya shop : Colville

Hi Everyone

We have our new shipments on the way from India, and hope to start opening the shop occasionally by early October. Our early season hours will be 10 a.m. to around 2.30/3pm. We will be open over the Labour day weekend between 10am to around 4.30 /5 p.m. shop 07 8667 224 home 07 8666 865 Anette 021 139 7838, Rob 021 155 8559 robnnet@yahoo.com

The Forager's Kitchen

9am - 3pm Tuesday to Saturday
Closed Sunday & Monday



Keep an eye open for pizza nights and more events to come.
Thank you for your support!

Alex the arborist is back!

From October, Alex will be back in Colville. With over nine years arborist experience including plenty of big and complicated jobs, fully insured, there aren't many trees he can't tackle. Get in touch for all your tree chopping, dropping or chainsaw milling needs!



Call 021 0511153 for a free quote.

This successful small business, supplying high quality hand tools, is for sale. Can be run from anywhere with storage. **For more details please contact:** shop@gardentools.nz or Jo 021 739 398



Ph 021 739 398
www.gardentools.nz

WHAT'S ON IN NORTHERN COROMANDEL?

Regular events

Mondays	Te Reo-Te Ao with Matua Brendon @ Colville School 5 - 6.30pm
Mondays	Tai Chi with Christina Wu @ Colville Hall 4.10pm
Tuesdays	Yoga with Kate @ Colville Hall 10am.
Tuesdays	On the Mat (Judo) for Children & Youth @ Colville Hall 3.00 - 3.45pm
Wednesday	Meditation @ Mahamudra Centre 8:15- 8:45am (except during retreats)
Thursdays	Enliven (Social Programme for Older People) 10am - 2pm
Sundays	1st Sun of the Month Tennis Club working bee 2 - 4pm

October

Sat 8	Local elections close
Sun 9	Memorial service for Adam Walter @ Colville Hall 11.30am
Wed 12	Colville Community Health Trust AGM @ Colville War Memorial Hall 12pm
Fri 21– Mon 24	Colville Festival @ Colville Hall - look inside at pages 6-9 for details
	How to Meditate silent retreat with Hedwig Bakker @ Mahamudra Centre
Sat 29	CHC Potting Party @ Harbour Care Nursery 10am—2pm

November

Fri 11	Youth Music Performance Night @ Forager's Kitchen 5.30pm
Fri 18-Sun 20	Waking Up to the Moments of Your Life with Hedwig Bakker @Mahamudra
Sat 19	The Colville Project Community Hui @ Colville Hall 10:30 & @ Waikawau 2pm
Fri 25	First Aid Course Refresher and Full @ Colville Hall 9am-3/5pm
Fri 25-Sun 27	Spring Refresh Women's Retreat with Wild Stillness Retreats @ Mahamudra

IMPORTANT NUMBERS

111	Fire ambulance, police emergencies needing immediate assistance
105	Police for reporting incidents not requiring immediate response
0800 CRIMESTOPPERS	for reporting crime (<i>anonymous</i>)
0800 611116	for medical advice or information 24/7
0800 044 334	National Sexual Harm Helpline (Text 4334)
0508 326 459	Sexual Harm - Child/Tamariki at risk
0508 828 865	Suicide Crisis Helpline
0800 543 354	Lifeline (<i>Whatever the issue, here to listen</i>)
0800 111 757	Depression Helpline: free text 4202
0800 688 5463	Outline (<i>all-ages rainbow mental health organisation support line</i>)
0800 376 633	Youthline (<i>free counselling services for young people</i>)
0800 764 766	National Poison Centre
07 8666618	Colville Community Health Centre
07 8666 815	Colville School
07 8666805	Colville General Store
07 8668 319	Colville Bay pre school
07 866 8702	Coro pharmacy M - F 8.30am - 5pm; Sat 9am - 1pm

ALCOHOLIC DRUG HELPLINE

Free & Confidential 9am to 10pm everyday **0800 787 797**

Open friendly meeting. Anonymity assured, please phone **021 314 467**