

# PĀNUI

September 2020

Newsletter for the Northern Coromandel



2311 Colville Rd, Colville, 3584

PHONE: 07 866 6920      [cssc@colville.org.nz](mailto:cssc@colville.org.nz)

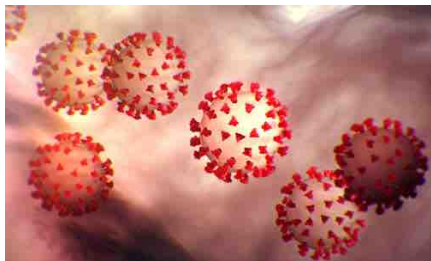
HOURS: 10am - 3pm TUES, WED, FRI

Closed MON, THURS

[panui@colville.org.nz](mailto:panui@colville.org.nz)      [www.cssc.net.nz](http://www.cssc.net.nz)

Kia ora,

Well we talked too soon! Covid 19 has reared its contagious head again (not really a surprise). So find a mask, keep your distance and carry on. Tricky times.



*Disclaimer: The opinions expressed in this publication are not necessarily those of CSSC*

### **Guidelines for contributions**

Contributions are welcome but may not always be used. We may also edit them.

Email us your news, notices, advertisements, jokes, recipes, dreams & handy hints.

Please send in Word or Open Office (not PDFs). Or post, or drop contributions into CSSC.

**Deadline for the Octobers issue:  
Tues 16 September**

**Subscriptions if you live  
outside delivery area**

For an electronic copy (which comes in colour): email [panui@colville.org.nz](mailto:panui@colville.org.nz) with 'subscription' in the subject line. For a mail copy: email/phone us. Subscription cost for printed copies is \$25 per annum. Contact us on

07 8666 920 or email us at [panui@colville.org.nz](mailto:panui@colville.org.nz)

### **Contact Information**

Phone 07 8666 920  
Email: [cssc.net.nz](mailto:cssc.net.nz)

2311 Colville Road, Colville.

#### **Hours:**

Tues, Weds, Fri 10am -3pm

Mon & Thurs Closed

Closed for lunch 12.30-1pm

**Coordinator - Larisa Webb**

[csscordinator@colville.org.nz](mailto:csscordinator@colville.org.nz)  
021 258 8037

**Financial Administrator  
Nicole McCauley**

[csscfinance@colville.org.nz](mailto:csscfinance@colville.org.nz)

**Community Worker - Peter Selwyn**

[communityworker@colville.org.nz](mailto:communityworker@colville.org.nz)  
021 057 2176

Phone/email/drop in to make an appointment (available Tues & Fri)

**Community Development Worker -  
Pamela Grealey**

[cdw@colville.org.nz](mailto:cdw@colville.org.nz)

**Colville Harbour Care Nursery**

**Beth Pearsall**

[chccordinator@colville.org.nz](mailto:chccordinator@colville.org.nz)  
021 237 8678

**Youth Group - Elizabeth Mitchell &  
Nathan McCauley**

[youthgroup@colville.org.nz](mailto:youthgroup@colville.org.nz)

**Pānui editor- Kate Shelley**

[panui@colville.org.nz](mailto:panui@colville.org.nz)

**Youth Mentor programme  
Spike Mountjoy**

[colville.mentor@gmail.com](mailto:colville.mentor@gmail.com)  
022 6047 975



**Colville Social Service Collective (CSSC)** would like to thank our funders and supporters :-

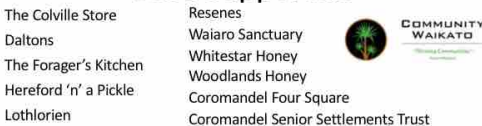
### CSSC Main Funders



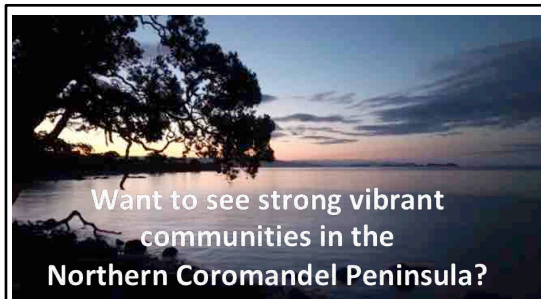
### CSSC Funders



### CSSC Supporters



*CSSC would like to express our immense gratitude to our funders and supporters*



Want to see strong vibrant communities in the Northern Coromandel Peninsula?

Got ideas and prepared to be a voice for your community?



CSSC is welcoming interest from people wanting to join our great Trustee team.

For more information email [csscchair@colville.org.nz](mailto:csscchair@colville.org.nz)

If you would like to support CSSC you can donate online with a bank deposit to:

CSSC 38 9009 0798558 00  
(and put donation in the reference field) or contact Larisa [cssccordinator@colville.org.nz](mailto:cssccordinator@colville.org.nz)

### Expressions of Interest Sought: Community Development Worker

Colville Social Service Collective is seeking expressions of interest (EOI) from people interested in the role of Community Development Worker. Please note we have not yet secured funding for this position. If we receive funding it will be for a six month fixed-term part-time position starting in October 2020. For more information and a copy of the Job Description please contact Larisa at [cssccordinator@colville.org.nz](mailto:cssccordinator@colville.org.nz) or phone. EOI close 5pm, 18 September 2020.

### Youth Mentor Programme

Would you like to learn to surf? Weave a kete? Restore an old motorbike? Take up an instrument? Create your own online game? Get some work experience? Or hang out with someone creative and kind? If you are aged between 12 and 24 Colville's new youth mentor programme is for you - contact Spike at [colville.mentor@gmail.com](mailto:colville.mentor@gmail.com) to find out more.



**COLVILLE**  
COMMUNITY HEALTH TRUST

Kia ora koutou,

We've been having quite a busy winter at the Health Trust. We are making great headway with getting our new staff and student housing in Colville up and running. Fantastic donations of furniture have been made, helping us set up two bedrooms, the lounge and the basics for the kitchen. Thank you to all donors. We are still in need of a bathroom mirror/medicine cabinet, a washing machine, pots, pans, and cutlery for the kitchen, and to make it feel really homely for our students and others who have need of the space, maybe some pictures for the walls? If you have other items and think maybe...?...just give Emily a call (021 0246 2028) or email (colvilletrustmanager@gmail.com).

We still have pots of manuka-kumerahau tonic available, you should have received a flyer in your postbox by now. Remember, if you are 65+ or have a health issue that makes you vulnerable to winter viruses, get in touch to reserve yours - don't be shy, it is FREE, after all!

Our AGM will be held on 30 September at 1pm in the Colville Hall.

All are welcome. Ngā mihi nui!



The Colville Community Health Trust AGM  
1pm Wednesday, 30 September 2020

To be held at the Colville Hall

All welcome Light refreshments provided



**The Colville  
Project**

[www.thecolvilleproject.nz](http://www.thecolvilleproject.nz)

TCP is a community organisation looking to meet a suitable piece of land for future use as a combined project.

Must have GSOH (good space and hectares) and be able to accommodate the wide range of activities that TCP is looking to create.

The future is bright, let's do this together.

Contact: [thecolvilleproject@gmail.com](mailto:thecolvilleproject@gmail.com)

# FREE 2020 Driver Refresher Course

Only 20 spaces per course, booking in is essential!

**60+ this classroom workshop is for you!**

- ✓ Road Rules & defensive driving tips
- ✓ Intersection and roundabout rules
- ✓ Medication and driving
- ✓ Rural and urban driving

Light refreshments provided.  
No vehicles required and no tests or assessments



Wed 2 Sept  
TCDC, Civic Centre  
Mary St  
Thames  
9.15 - 1pm

Fri 6 Nov  
TCDC Community Board Room  
11 Monk St,  
Whitianga  
9.15 - 1pm

Wed 18 Nov  
TCDC Community Room  
355 Kapanga Rd,  
Coromandel

Phone Thames-Coromandel District Council on 07 868 0200 to book your space!

**Road Safety IS EVERYONE'S Responsibility**

## SAIL INTO SPRING WITH THE YOUTH SAILING ACADEMY'S FAMILY FUN DAY!

Bring a picnic to Otautu beach on Saturday September 26th from 12 noon. Kids can have a go at sailing - either by themselves, with their parents or a coach.

If the weather's grim we'll try the same time on Sunday the 27th.



## Community Law Waikato

is providing a great opportunity to study Law:

Community Law Waikato present our 'Learn about the Law' series – Online'.

To register, please email your name and contact phone number or you can visit our website to register

<https://www.clwaikato.org.nz/page/legal-education/#anchor1>

These sessions are \$5.00 per session. Once you have registered you will be emailed a link to 'join' the education session. If you would like to attend these sessions and cost is an issue please email [liaison@clwaikato.org.nz](mailto:liaison@clwaikato.org.nz).

**Topic** (subject to change) Date (10am to 12pm)

Credit Contracts

10-Sep-20 Dispute Resolution

24-Sep-20 Health and Disability (10am to 11am)

1-Oct-20 Mental Health Law

**GOLVILLE *mini* SPRING FEST**

**GOLVILLE SINGS COUNTRY**  
30 PM FRIDAY 4TH SEPTEMBER 2020  
\$25 AGE 16+  
Tickets essential @ Colville Store & Richardsons Coro  
\* \* \* Costume Competition \* \* \*

**COUNTRY PARTY**  
DJ DOC WESTIE & DJ ISAAC LEVI TUCKER  
5PM SATURDAY 5TH SEPTEMBER 2020  
\$20 / KIDS UNDER 16 KOHA  
Doors Sales - Cash Only  
\* Kids Disco \* Best Costume Prize \* Pie Competition \* Dinner

**GOLVILLE HALL**

[www.colvilleartsfestival.co.nz](http://www.colvilleartsfestival.co.nz)



COLVILLE HARBOUR CARE  
Te Umangawhā o Ngāi Waka

## 11,000 TREES PLANTED THIS SEASON

You might have seen our trucks buzzing around town full of trees. It's been a full season and we are proud to have planted another 11,000 trees in the Colville catchment this year. That brings our grand total to 31,000.

Thank you to all the landowners who have worked with us and to Rakesh and Jayson who have dug a lot of holes!

### POTTING PARTIES 2020!

Saturday 19 September 10am – 2pm

Saturday 17 October 10am – 2pm

Saturday 21 November 10am – 2pm

Join us at the nursery for the famously good time filling pots, listening to good beats and eating yummy food with your friends!





**COLVILLE COMMUNITY HEALTH CENTRE**

**2299 Colville Rd, RD 4, Coromandel 3584**

**Phone 07 8666618. Fax 07 8666619 Our txt number for the clinic is 4448**

Mon, Tues, Thurs & Fri **9.00am – 4.00pm** / Wed **10.00am - 4pm**

- GP Clinic at **Port Charles – Cancelled till further notice**

**For afterhours service phone the clinic number 07 866-6618.**

**Please listen to the message carefully.**

**The On Call person will be paged by the afterhours service.**

**The answerphone service operates during the hours we are open**

**if all lines are busy or if we are closed for lunch**

**Remember - If it's an emergency, dial 111**



Kia ora tatou

Hoping everyone is enjoying the Spring weather. Bush clematis, daffodils and lambs bring a smile to many faces!

At the clinic, our daily appointment templates change regularly and because of this we sometimes 'lose' appointments in the system that were booked months in advance. We know this happens because we have had two patients turn up for appointments that have 'vanished'. Our sincere apologies to you, if this has been your experience! In response to this we are asking people/families to call us two weeks out from when their next review appointment is due and we will make an appointment then that suits. Our team are not as booked up as they were previously which enables booking two weeks out to occur. We will appreciate your help with this.

Just letting everyone know that we still have plenty of Flu vaccines in stock, so people can still have these if they wish to, including those of you who are not funded (but you will still have to pay). Please ring the Clinic if you wish to make an appointment for this.

We have a 5th year student Taehoon Kim working with us currently. We hope that some of you will get to see him while he is here. Every chance he has to learn enriches his placement here in Colville and will hopefully help him develop skills for his doctoring into the future.

All of the team at the clinic would like to convey our thanks for the very generous support we received through fundraising undertaken by the Colville Community Health Trust. Due to your kindness and generosity, we have been able to purchase much needed new equipment, examples being surgical and patient monitoring equipment, plus some practical stuff like heaters and headlamps for our team who do night call outs. We are all feeling pretty blessed to be able to get some of the things that make our work easier, definitely safer and more comfortable for all. Many others have also contributed, by donating firewood, labour, linen and on occasions, an assortment of lovely things to eat. A great big thank you one and all - Once again it reminds us of how truly special this community is.

Till next time keep safe and well, and remember to keep vigilant, as we are not 'over' Covid 19 yet! The team at Colville Community Health Centre.



Mahamudra Centre  
for Universal Unity



## September Events

**11 – 13 September** Weekend Retreat - The Three Principal Aspects of the Path with Geshe Wangchen. Join us for a weekend of meditation and learning.

**19 September 10am-3pm** Practice Day with Venerable Khadro. Includes delicious vegetarian lunch. By donation.

**27 September 10:30am-1pm** - Compassion for Covid Community Day includes free lunch, meditation, light offering, and kids activities!

**2-4 October** Recognising Natural Awareness - A weekend Retreat with Hedwig Bakker.

**8:30am** Free daily guided meditation. Just drop in!

Reiki sessions available by appointment.

Everyone warmly welcome!

**2183 Colville Road 07 866 6851 [retreat@mahamudra.org.nz](mailto:retreat@mahamudra.org.nz)**

**[www.mahamudra.org.nz](http://www.mahamudra.org.nz)**

## Colville Community Health Centre

We are seeking expressions of interest for our Practice Manager role. We require someone who has excellent communication skills and has had a variety of management experiences which could include financial, people and quality. The ideal person will also be IT savvy, have a good understanding of health services and the PHO environment. Fit with the team will be a key requirement. If this sounds like you, please submit you CV along with a letter expressing your interest in the role to: [practicemanager@colville.org.nz](mailto:practicemanager@colville.org.nz) by the 19th September 2020.

*“Sometimes we choose the road we follow.  
And sometimes the road chooses us.”*

— **Richie Singh, Chasing Butterflies**





## COLVILLE STORE NEWS



opening hours: Mon-Sat 8.30am-5pm  
Sundays 8.30am - 4pm

Ph 07 866 6805  
colvillegeneralstore@gmail.com

Thanks for everyone's efforts in signing in or using the QR code for Covid tracing.

The store is very well stocked for winter and we think we've pretty much got it covered. If we haven't, please let us know what you are wanting. We are happy to still do email or telephone orders for those who can't or don't want to come in and the RD continues to be fabulous at delivering orders.

The bulk room has increased its stock to include a lot of non organic goods so we have colour coded the things to make it easier for customers. Look for the green labels or coding for all organic products.

Wishing everyone a warm spring.

## Colville First Response



**St John**  
Here for Life

***Supporters Scheme Membership***, when residents have renewed their

Supporters Scheme Membership, they will often add a donation. Any donations are paid directly to the national body or if paid by credit card are not allocated to the Coromandel Area Committee, Colville is also part of the Coromandel Area Committee. If you wish your donation to support Coromandel/Colville specifically you can pay your renewal plus donation by internet banking to the Area Committee bank account: The Order of St John Coromandel – 020304 0002419 00, using your name and membership number as reference. The same bank account can be used for separate donations as well. If you need further information or clarification please don't hesitate to call Peter Sephton, Chairperson Coromandel St John Area Committee, on 027 242 4090.

Supporter Scheme Membership Forms can be found at Colville Medical Centre, Colville General Store and Coromandel Ambulance Station.

Colville First Response were RUNNER UP in the Team Excellence award for the Waikato Area in June for Volunteer Week. Well done Team. Thank you Hereford 'n' a Pickle for the impressive platter and coffee while we watched the livestream of the Award Ceremony.



## **MEG Operations**

Work has been progressing on the Mega Rat Attack, an extension to the Rat Attack Project in Port Charles that will see another 200 hectares of native bush under rodent control. When complete there will be 450 hectares of bush protected by approximately 3000 traps that will be checked every month by our field team.

We need to build 1250 more wooden boxes to house the traps for the mega rat attack. Last month the first delivery of 400 metres of wood was delivered to our workshop base in Waikawau Bay, our legendary trap builder Terry has turned all of that wood into a big pile of individual lengths ready to nail together as boxes. The first boxes will be made with pupils from Colville School as part of a conservation week activity, thanks guys!

Before we can put the trap boxes out in the bush we have to cut access tracks so we can get people in and out of different sections easily. The field team have been out with the chainsaw and scrub bars and have cut around 8 kms of tracks so we can walk in and out easily. These access tracks are also used for stoat trapping and possum control so it's good to use one track for multiple types of pest control.

A key part of the project is pest monitoring, this allows us to see what effect the trapping is having on the target pest and tells us if we need to change our methods or frequency. The monitoring tunnels have been installed and the first round of monitoring will occur this month.

Now we have some "easy" access to the bush the team have been out with a GPS and compass to mark the north south lines that the trap boxes will eventually be placed on. Following behind the person marking the tracks is another person cutting the track, no fancy power tools here, just a pair of loppers for the supplejack and a machete to clear everything else. The team have marked and cut 5800m of track so far, only another 22000m of track to go!

From the team at Moehau Environment Group

[info@meg.org.nz](mailto:info@meg.org.nz)   [www.meg.org.nz](http://www.meg.org.nz)

# David Wright

## Wright Contracting Services

General and Heavy Engineering including:

- ☐ Welding
- ☐ Machining / Fabrication



## *Looking for a Midwife?*

I'm an experienced midwife who loves living in the beautiful northern Coromandel. I provide community primary midwifery care and cover the upper and western side of the peninsula from Port Jackson to Manaia, including Colville & Coromandel Town.

**Sheryl Wright**

**Moehau Midwives**

**Phone (022) 500 1310**

**[www.birth.net.nz](http://www.birth.net.nz)**

**[moehau.midwives@gmail.com](mailto:moehau.midwives@gmail.com)**



## **COLVILLE TENNIS CLUB**



**AGM** Sunday 20 September 2020

1pm @ Tennis Club

ALL WELCOME



*Happiness is a choice*

Aeschylus

*Northern Coro Rubbish  
Collections for  
September*

Tues 1



Tues 8



Tues 15



Tues 22



Tues 29

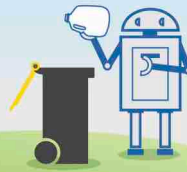


**KERBSIDE PLASTIC RECYCLING CHANGE**

**LOOK FOR THE NUMBER**



Only plastics 1 & 2  
will be collected  
for recycling



**RECYCLING REMINDER**

*TCDC no longer collect plastic types  
3 - 7.*

*ONLY plastic types 1&2, tins,  
paper & cardboard go in the green  
wheelie bins. Bear this in mind when  
you are shopping.*

**Coro Refuse & Recycling  
Centre.**



**Goldmine shop open**

Please Facebook us for guidelines for  
recycling.

**Tuesdays & Thursdays**

**11 - 4.30**

**Saturdays & Sundays**

**11 - 5.30**

**525 Hauraki Rd, Coromandel.**

**07 866 7616**

**Colville Bay Pre-School  
Pizza Fundraiser Evening Presents**

**Nathan's**

**RECORDING**

**Evening**

Check out recordings Nathan has collected from past acts and his own instrumental compositions.

**No covers, all original tracks**

Classic Colville Bands  
from the past.

Nathan's lock down  
compositions.

Nathan's electronica  
grooves.



**At the Foragers Cafe - Colville**

**Friday, 28th of August - 5 pm.**

**Pizza for sale - cash only (no epos available)**

FARM SHOP  
COLVILLE VILLAGE



**September Closed Mondays**  
open 9.30 am - 4pm ph 8666 937



While able, we will continue business as usual and ask people to sign the QR code at the door and observe social distancing.

In addition to our Mondays off, we will be closed for a week at the end of the month.



**Friday night burgers on.** Ph orders welcome

**100% HEREFORD BEEF BURGERS \* HOT CHIPS \* COFFEE \* BAKING \*  
PICKES 'N' JAMS \* LOCAL ART \* REAL FRUIT ICECREAM \* MEAT**

100% HEREFORD BEEF BURGERS \* HOT CHIPS \* COFFEE \* BAKING \*  
PICKES 'N' JAMS \* LOCAL ART \* REAL FRUIT ICECREAM \* MEAT



LIKE US ON  
FACEBOOK



**\* Yes we are open for business \***

Winter opening hours are as follows

CAFÉ—Wednesday to Sunday 10am—5pm

RESTAURANT—Wednesday to Sunday with bookings only

**Next darts game - SATURDAY 12 SEPTEMBER 6pm**

CLOSED = MONDAY & TUESDAY

**Relax & Revive Coromandel**

[www.relaxcoro.co.nz](http://www.relaxcoro.co.nz)

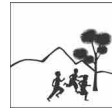
Certified Massage Therapist  
Relaxation Massage

**Jan is working from the tranquil surrounds  
of the Tangiario Kiwi Retreat, Port Charles**

By appointment  
Email: [info@relaxcoro.co.nz](mailto:info@relaxcoro.co.nz)  
Ph 021 268 6198



## Colville Bay Pre-School



Haere Mai!

Bring your children to Pre-School for fun & learning!

Tuesday to Friday 9am to 3pm during School terms.  
20 Free ECE hours for 3 years and over. WINZ subsidies available.  
Term 3 ends September 25. Term 4 begins 13<sup>th</sup> October.

On Wednesday mornings we have a Parents & Toddlers group  
while our 4 & 5 year olds are at Bush Kura.

We welcome new enrolments. Come and meet us!

Phone - 07 8668319 or 021 156 5185

Email - [colvillebay.elc@xtra.co.nz](mailto:colvillebay.elc@xtra.co.nz)

*Birth is not an emergency. It is simply an emergence.*

*Jeannine Parvati Baker*

*CONGRATULATIONS*  
*to Anita Pitu & Billy Keyworth*  
*on the birth of a baby girl*



*Fiale Pamela*  
*born at home on 18 August 2020*

<p>Community Law Waikato <small>18 The Mall, Hamilton 3201</small></p>  <p><b>Free Legal Services*</b> <small>(*Eligibility Criteria applies)</small></p>	<p>ph: 0800 529 482 visiting Thames fortnightly 12.30 - 2</p>
--	---



**COLVILLE LAWNS  
PROPERTY  
MAINTENANCE**

Seamus

021 0264 1000



**D & K  
HOME IMPROVEMENT  
HANDYMAN**

Ph. David Porter 027 224 8925

email: davidkim@colville.org.nz



Bryan: 021 799 056

[www.gardentools.nz](http://www.gardentools.nz)



Joanna: 021 739 398

**LIFETIME GUARANTEES**



**White Star Honey**

Producing Local Delectable Honey

Available from Colville General Store, Coromandel Meat Keeper or direct at White Star Station / Colville Farm Holidays. Contact Tellic 021 770 382 or email [wshoneynz@gmail.com](mailto:wshoneynz@gmail.com)

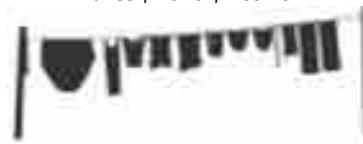
**Self Service Coin Operated  
Washing Machine and Dryer  
OPEN 7 days**

Available at White Star Station / Colville Farm Holidays 2140 Colville Road, Colville Coromandel (2 minute's drive, 1.7km South of the Colville General Store towards Coromandel Town)

Follow the signs at the front Gate.

\$4 per wash \$4 for 45mintues approx drying time.

Takes \$1 and \$2 coins.



## WHATS ON IN THE NORTHERN COROMANDEL

### Regular events

Enliven - every Thursday 10 am  
Yoga - every Tuesday Colville Hall 10am  
Sunset Yoga every Thursday With Vanessa @ colville School Hall. 5 - 6.15pm  
August events

Fri 28 Pre school Pizza Fundraiser with Nathan's recordings @  
The Foragers Cafe 5pm (cash only)

Fri 28,29,30 - All about Karma course. @ The Mahamudra centre

### September events

Fri - 11-13 The three principal aspects to the path. With Geshe Wangten  
@ Mahamudra centre

Sat - 12 Darts night @ Tangiaro 6pm

Tue -16 Panui deadline

Sat- 19 Colville Harbour Care Potting Party at CHC nursery, Wharf Rd 10am-2pm

Sat - 19 Practice Day with Venerable Khadro. Includes delicious  
vegetarian lunch. By donation 10am-3pm

Sun 20 Colville Tennis Club AGM 1pm

Fri 25 - End of Term 3

Sat 26 - Youth Sailing Academy family fun day @ Otautu 12 noon

Fri - 25/28 Illume Festival Coromandel

Sun - 27 - Compassion for Covid Community Day .Includes free lunch,  
meditation, light offering, and kids activities!10.30am - 1pm

Wed 30 - Colville Health Trust AGM @ Colville Hall 1pm

### October events

Fri 2/3 Recognising Natural Awareness - A weekend Retreat with Hedwig Bakker  
@ Mahamudra Centre

Sat - 17 Colville Harbour Care Potting Party at CHC nursery, Wharf Rd 10am-2pm

## IMPORTANT NUMBERS

111 Fire, ambulance, police emergencies needing immediate assistance  
105 Police - for reporting incidents not requiring an immediate response  
0800 CRIMESTOPPER For reporting crime (anonymous)  
0800 611 116 For medical advice or information 24/7  
0800 787 797 Alcohol Drug Line 24/7  
0508 828 865 Suicide Crisis Helpline  
0800 543 354 Lifeline  
0800 111 757 Depression Helpline: free text 4202  
0800 688 5463 Outline  
0800 376 633 Youthline  
0800 764 766 National Poison Centre  
07 8666 920 Colville Social Service Collective  
07 8666 618 Colville Community Health Centre  
07 8666 615 Colville School  
07 8666 805 Colville General Store  
07 8668 319 Colville Bay pre school  
07 866 8702 Coromandel Pharmacy M-F 8.30-5pm; Sat 9am-1pm